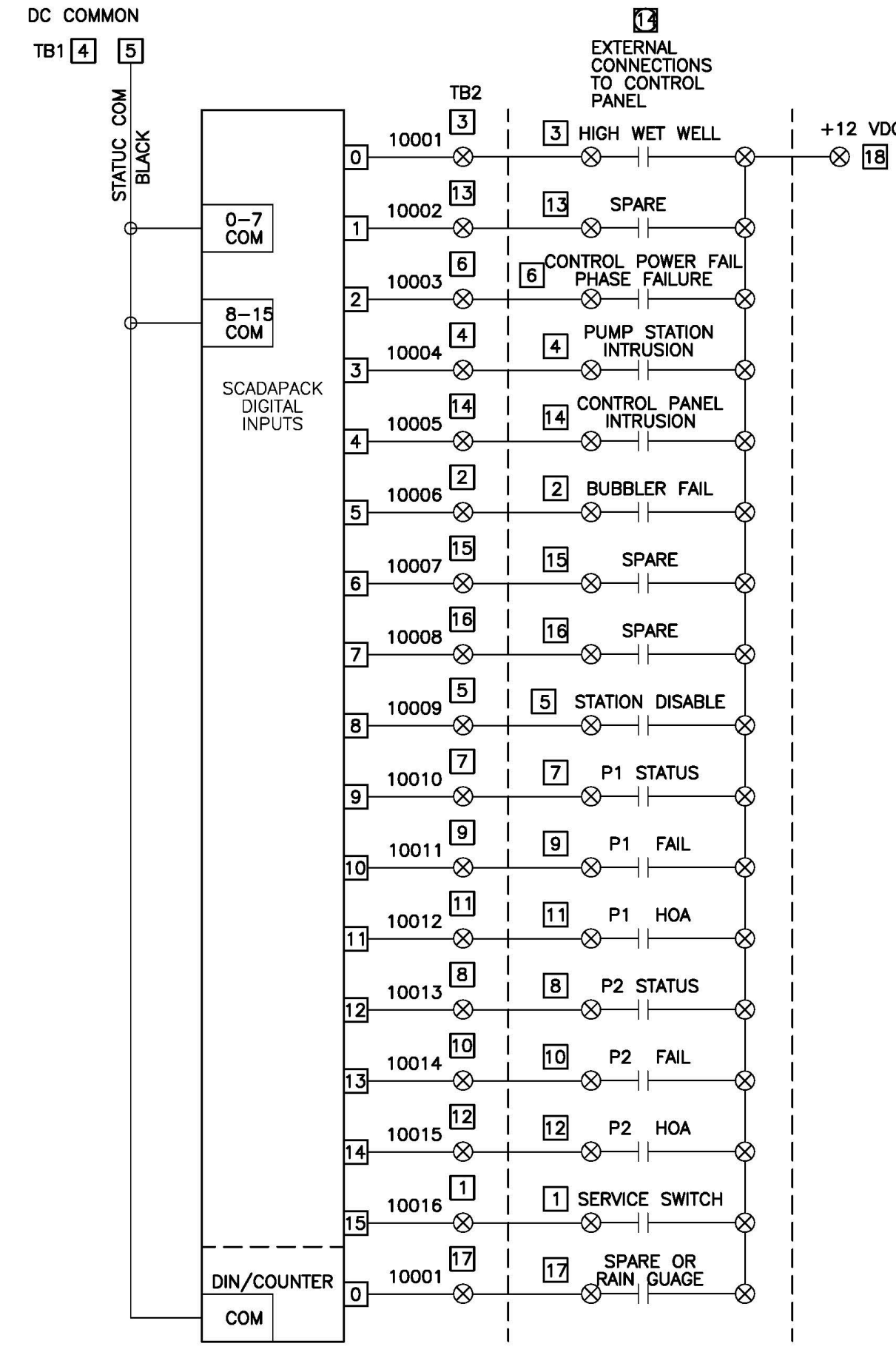
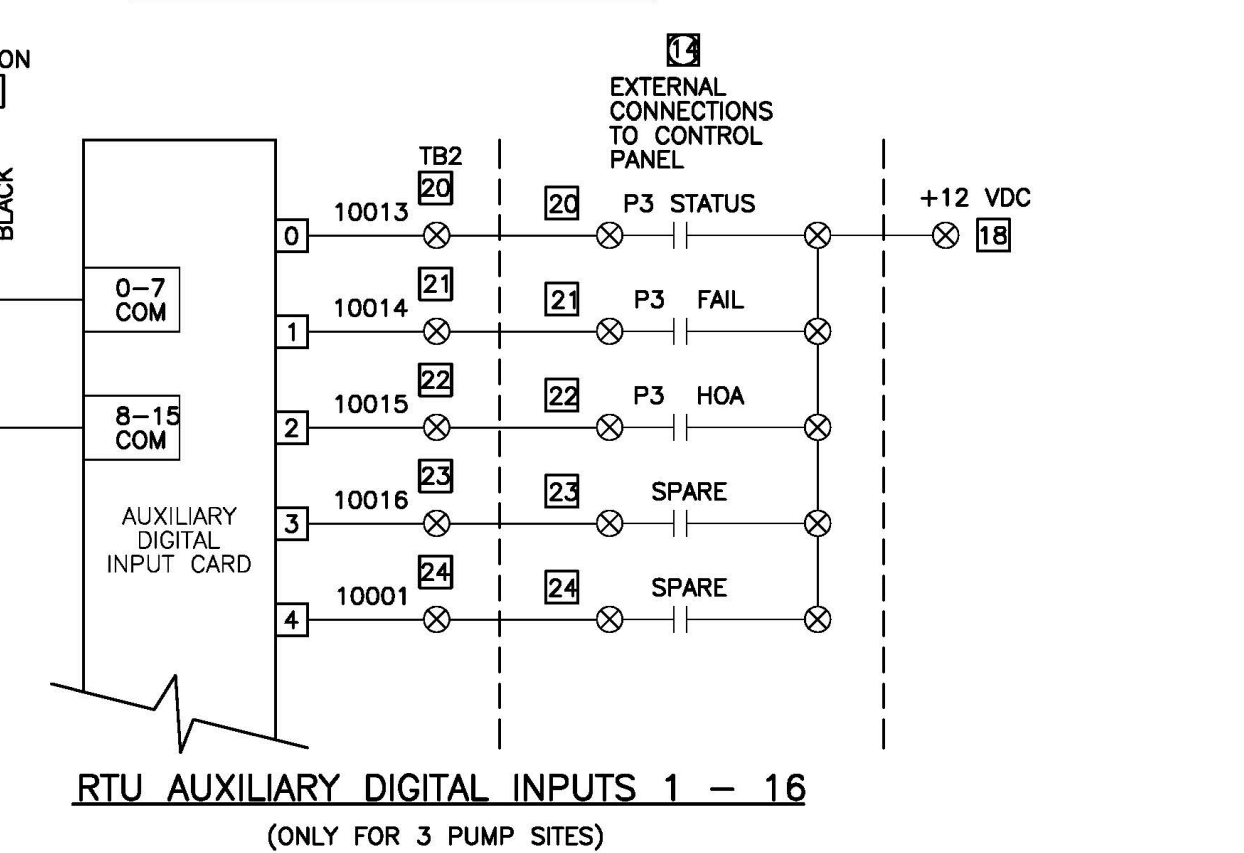
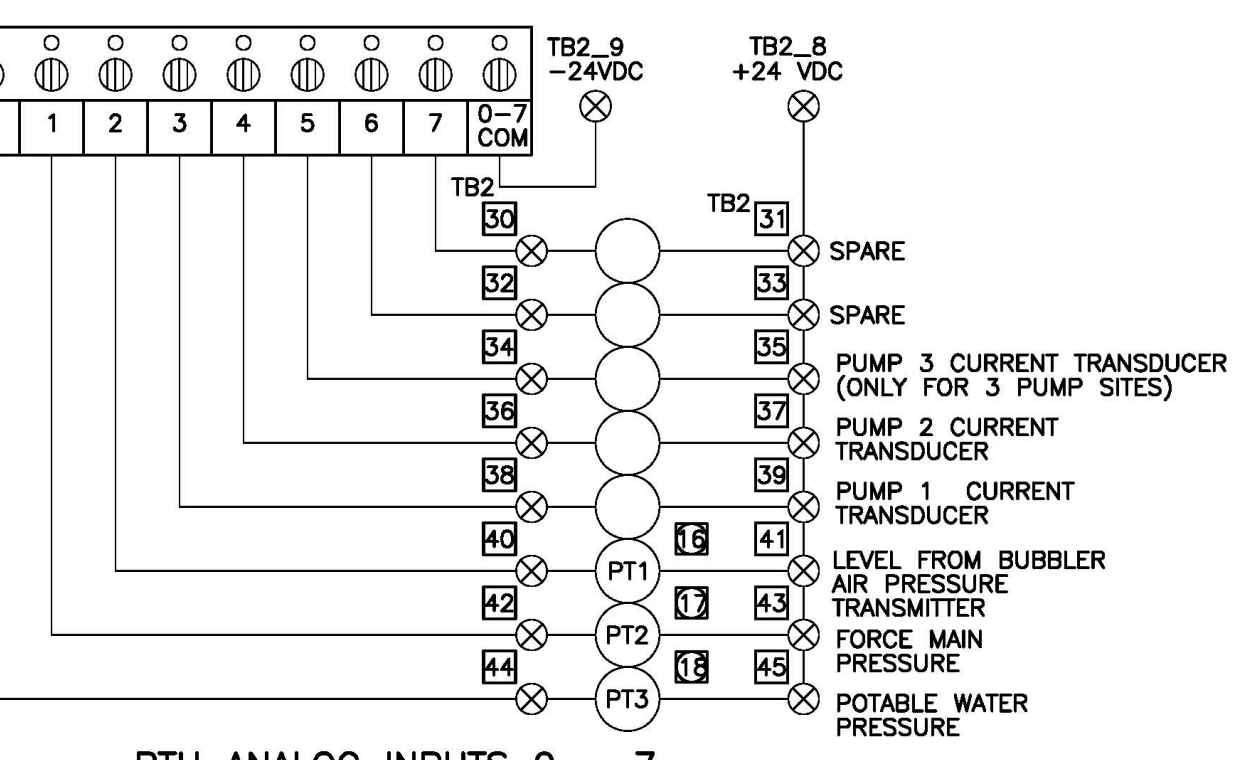
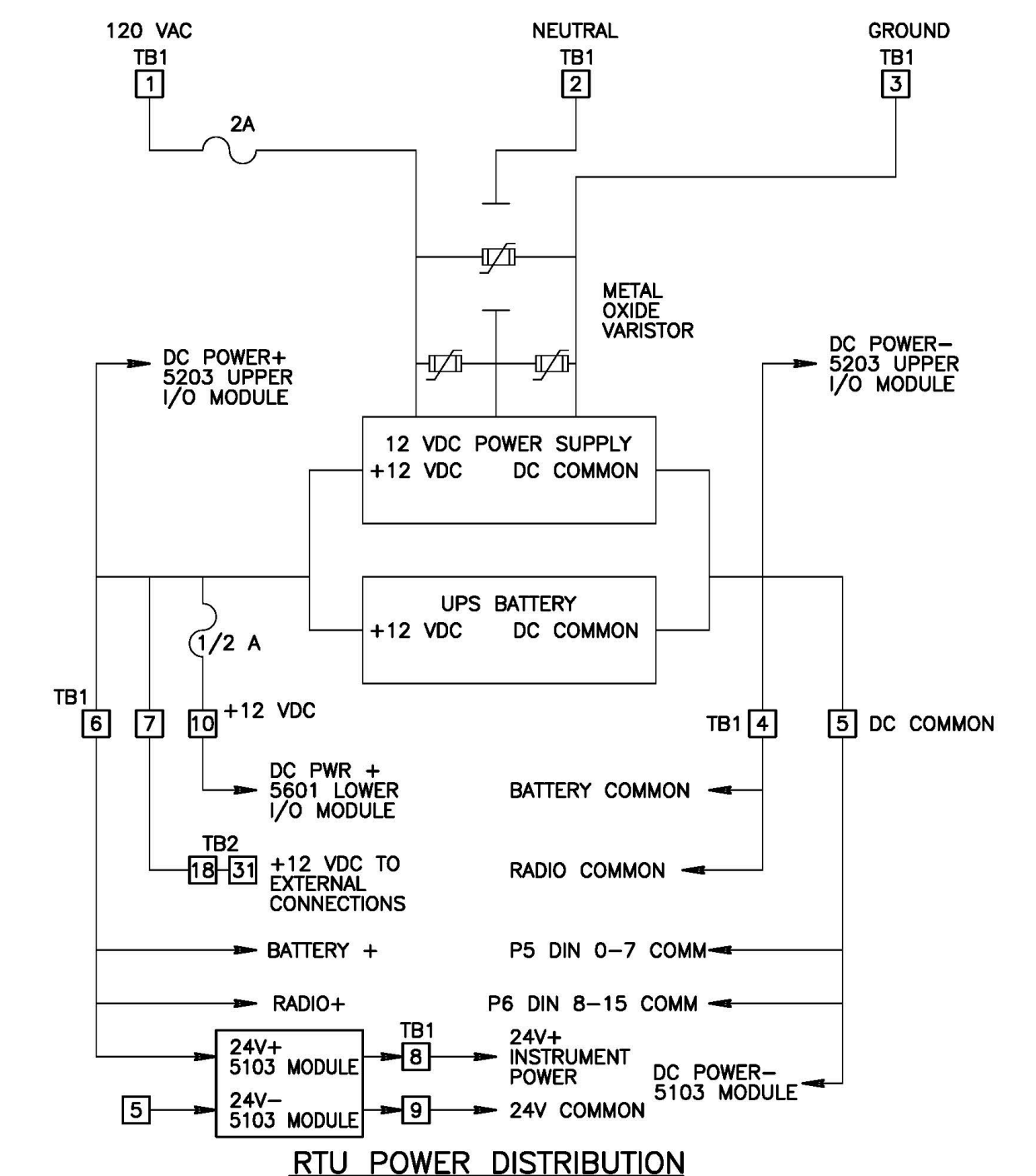
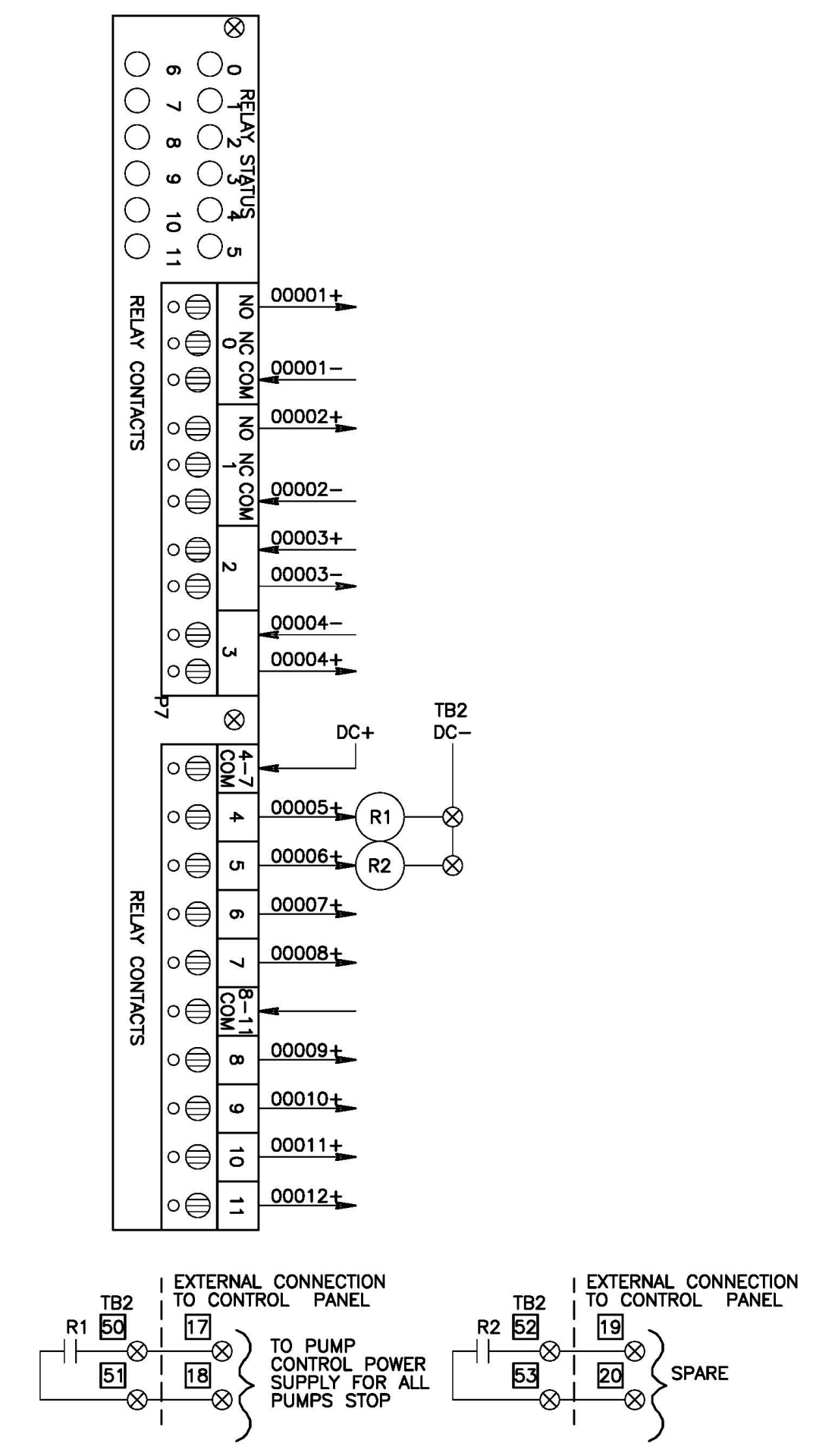


LIFT STATION RTU PANEL - INTERIOR
 (PANEL DOOR NOT SHOWN FOR CLARITY)
 (NEMA-4X, WHITE PAINTED ALUMINUM 12 GAUGE PANEL WITH LOCKABLE DOOR HANDLE)

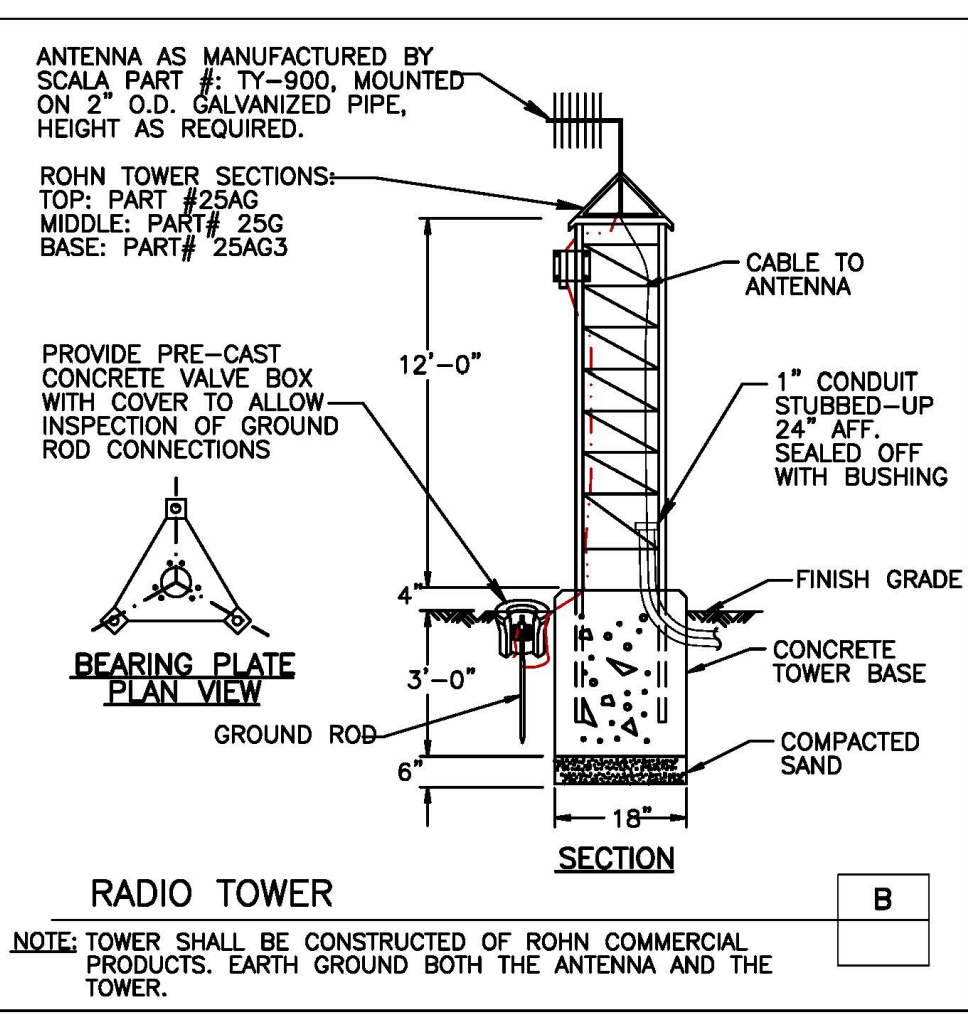
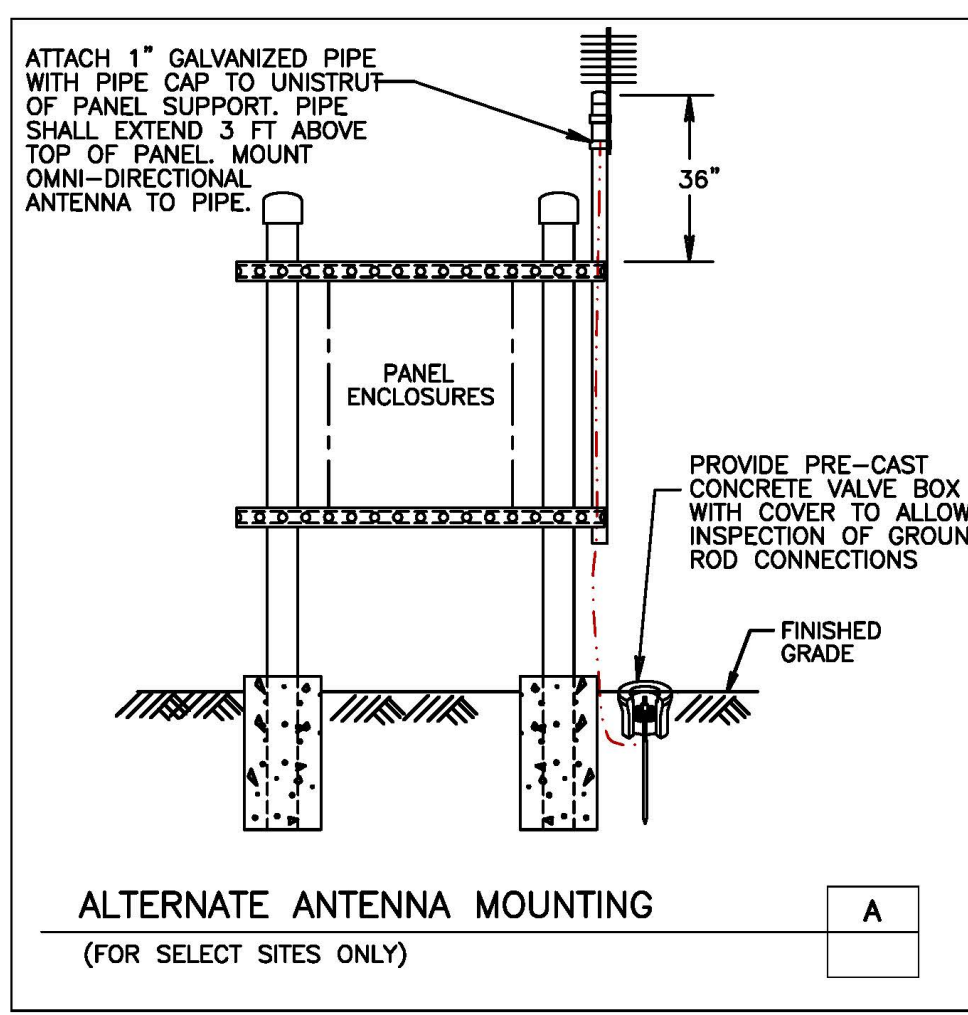
- GENERAL NOTES:**
- ALL CABINETS SHALL BE FABRICATED OF ALUMINUM WELDED CONSTRUCTION, WEATHERPROOF AS SHOWN, WITH NEOPRENE GASKETS.
 - WATER AND FORCE MAIN PRESSURE TRANSMITTERS SHALL BE PROTECTED BY LIGHTNING SURGE ARRESTORS, AS MANUFACTURED BY EDCO MODEL No.: SS64-036-1, OR EQUAL.
 - ALL ANALOG DEVICES LOCATED OUTSIDE OF THE RTU PANEL SHALL BE CONNECTED TO LIGHTNING SURGE ARRESTORS.
- NOTES:**
- SCADAPACK PLC AS SUPPLIED BY ENGINEER SERVICE CORPORATION, P.O. BOX 23511, JACKSONVILLE, FL 32241. (TEL): 904-268-0482. (FAX): 904-268-3490.
 - CONTROL MICROSYSTEMS 5103 POWER SUPPLY
 - CONTROL MICROSYSTEMS 5403 8-CHANNEL D/I REQUIRED FOR 3 PUMP SITES
 - MDS-9810 SPREAD SPECTRUM TRANSCIVER
 - OMRON 12 VDC POWER SUPPLY FOR PLC
 - (3) MOV'S (LIGHTNING SURGE ARRESTOR)
 - TERMINAL STRIP TB1
 - COOLING FAN
 - POLYPHASER IS50B-LN-C2 SURGE PROTECTOR FOR THE ANTENNA.
 - YUASA UPS BATTERY
 - 2" WIDE WIREWAY
 - RELAYS
 - TERMINAL STRIP TB2
 - CONTACTS LOCATED IN PUMP LOCAL CONTROL PANEL.
 - AUXILIARY DISCRETE I/O CARD (FOR THOSE STATIONS EQUIPPED WITH THREE PUMPS ONLY).
 - WATER PRESSURE TRANSMITTER LOCATED AT THE BACKFLOW PREVENTER, AS MANUFACTURED BY ENDRESS & HAUSER PART #: PMC-41-PC11P8H11N1
 - FORCE MAIN PRESSURE TRANSMITTER LOCATED ON FORCE MAIN IN VALVE VAULT.
 - LEVEL TRANSMITTER LOCATED ON BUBBLER AIR LINE IN LOCAL CONTROL PANEL, AS MANUFACTURE BY ENDRESS & HAUSER PART #:PCM-131-A22F1Q4H.
 - RTU SUPPLIER TO PROVIDE 100 FT. OF (4)-2/C#16 SHLD. (600V INSULATION) CABLE AND 20 FT. OF 25 CONDUCTOR #16 THHN CABLE. PROVIDE AN EXTRA 12 CONDUCTOR #14 THHN CABLE FOR THOSE SITES WITH 3 PUMPS. CABLE SHALL HAVE NUMBERED WIRES, AS MANUFACTURED BY BELDEN, OR EQUAL.



RTU DIGITAL INPUTS 1 - 16 AND COUNTER



RTU DIGITAL OUTPUTS 1 - 12

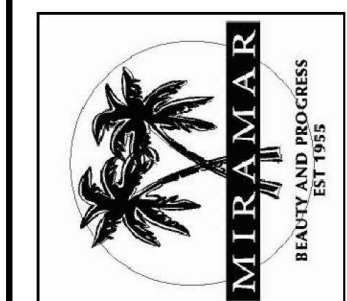


RTU PANEL LAYOUT

NO.	DATE	REVISIONS	BY

WASTEWATER PUMP STATION

**CITY OF MIRAMAR
 DEPARTMENT OF
 CONSTRUCTION & FACILITIES MANAGEMENT
 ENGINEERING STANDARDS**



SCALE:
N.T.S.

SHEET NO.
8 OF 11