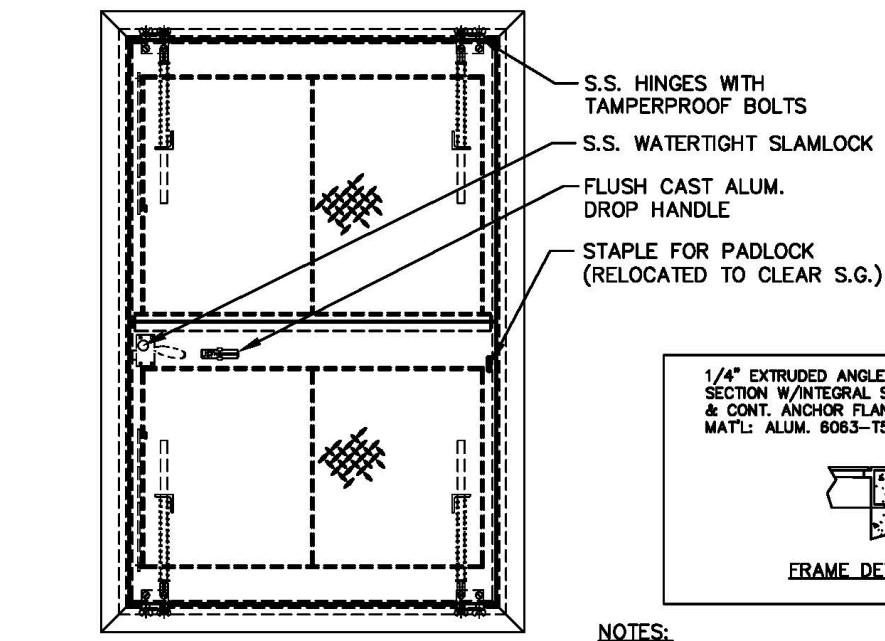
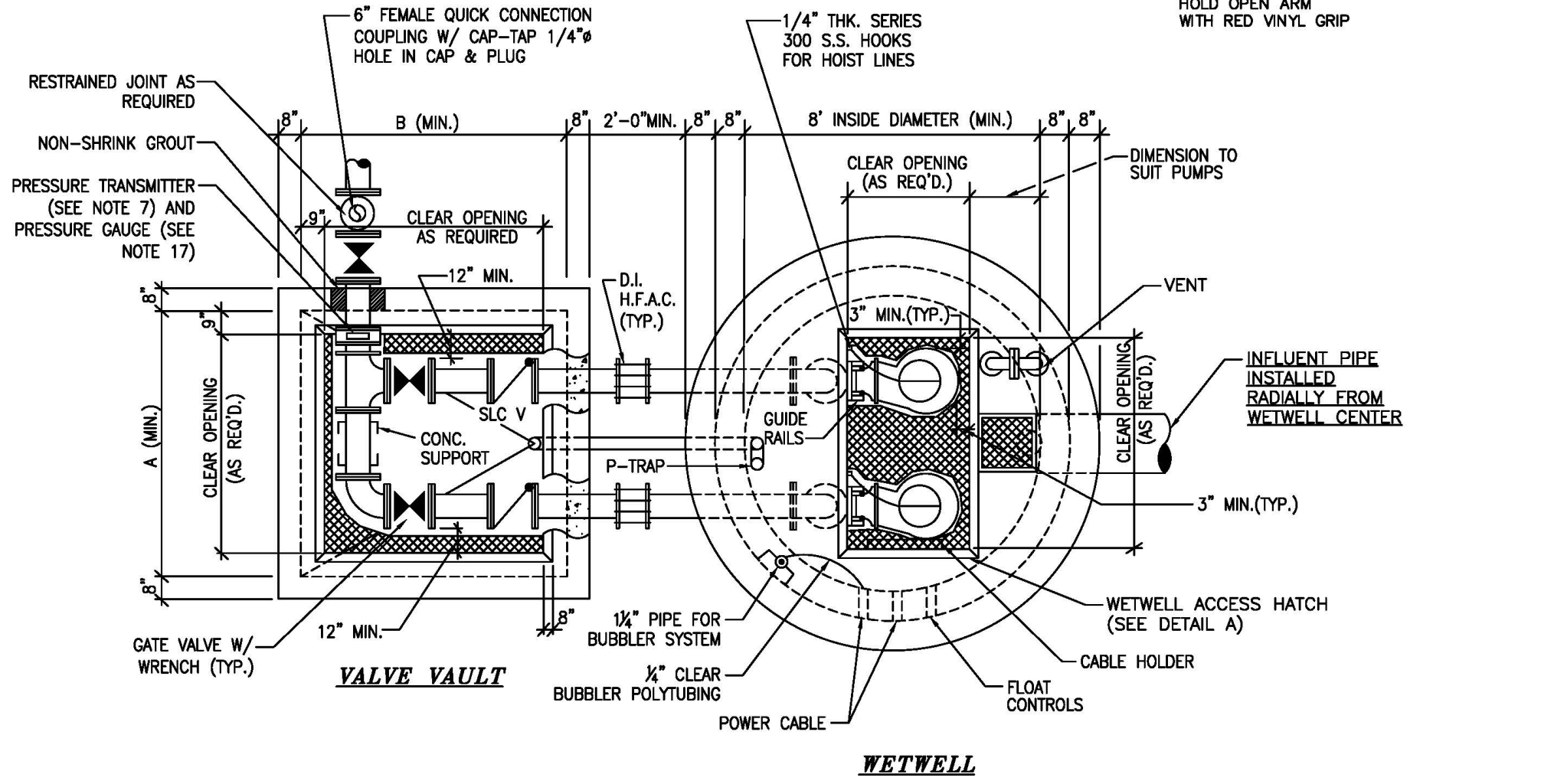


**DETAIL A**  
**WETWELL ACCESS HATCH**  
N.T.S.



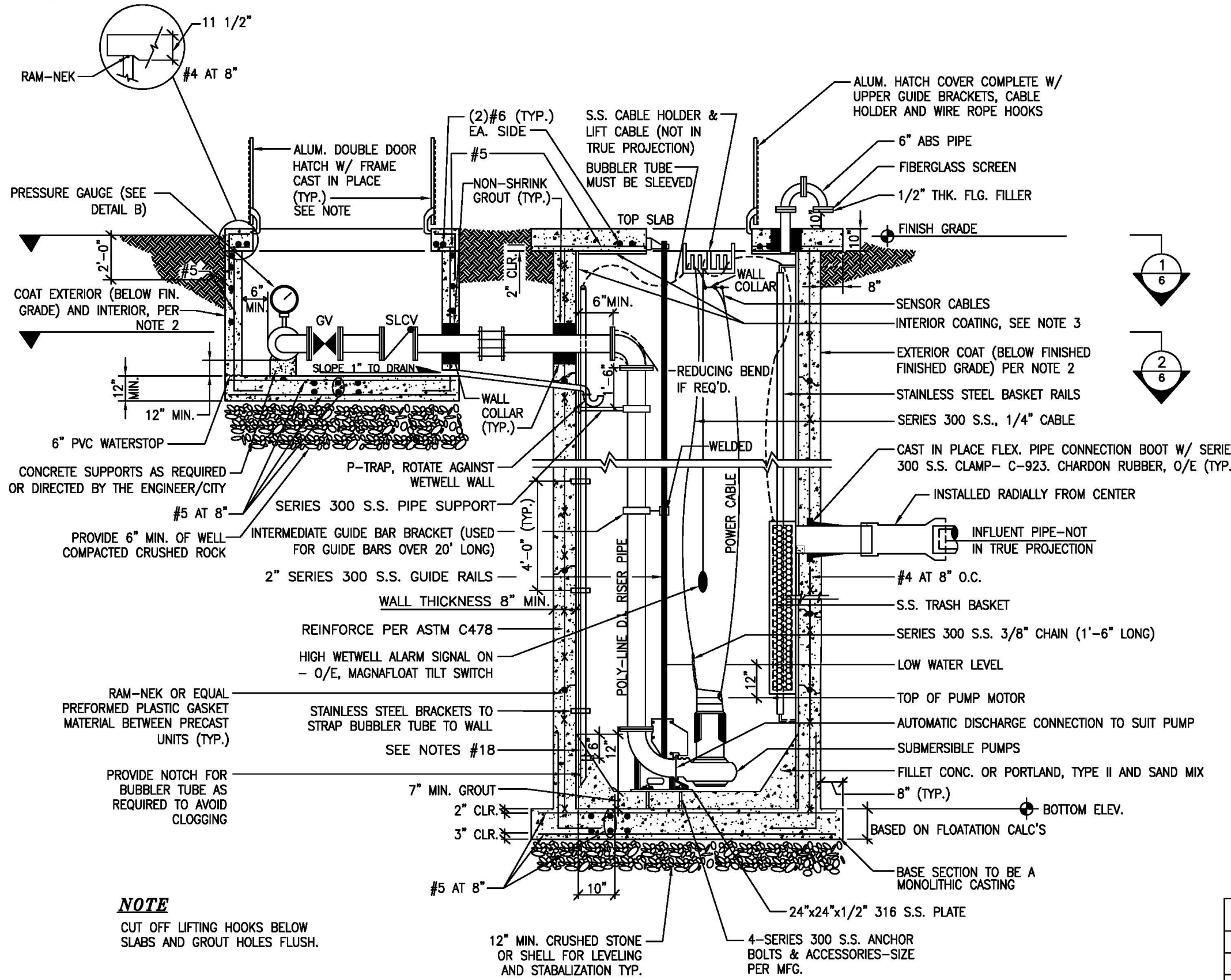
**DETAIL B**  
**PRESSURE GAUGE**  
N.T.S.

- NOTES:**
- 1- MATERIAL: ALUMINUM
  - 2- LOADING: 300 LBS. PER SQ. FT.
  - 3- 316 STAINLESS STEEL NUTS & BOLTS
  - 4- APPROXIMATE HATCH WEIGHT: 182 LBS.
  - 5- APPROX. SAFETY GRATE WEIGHT: 44 LBS.
  - 6- SAFETY GRATE TO BE PAINTED WITH SAFETY ORANGE POWDER COAT.
  - 7- AREA OF FRAME IN CONTACT WITH CONCRETE TO BE PAINTED WITH BITUMINOUS COATING

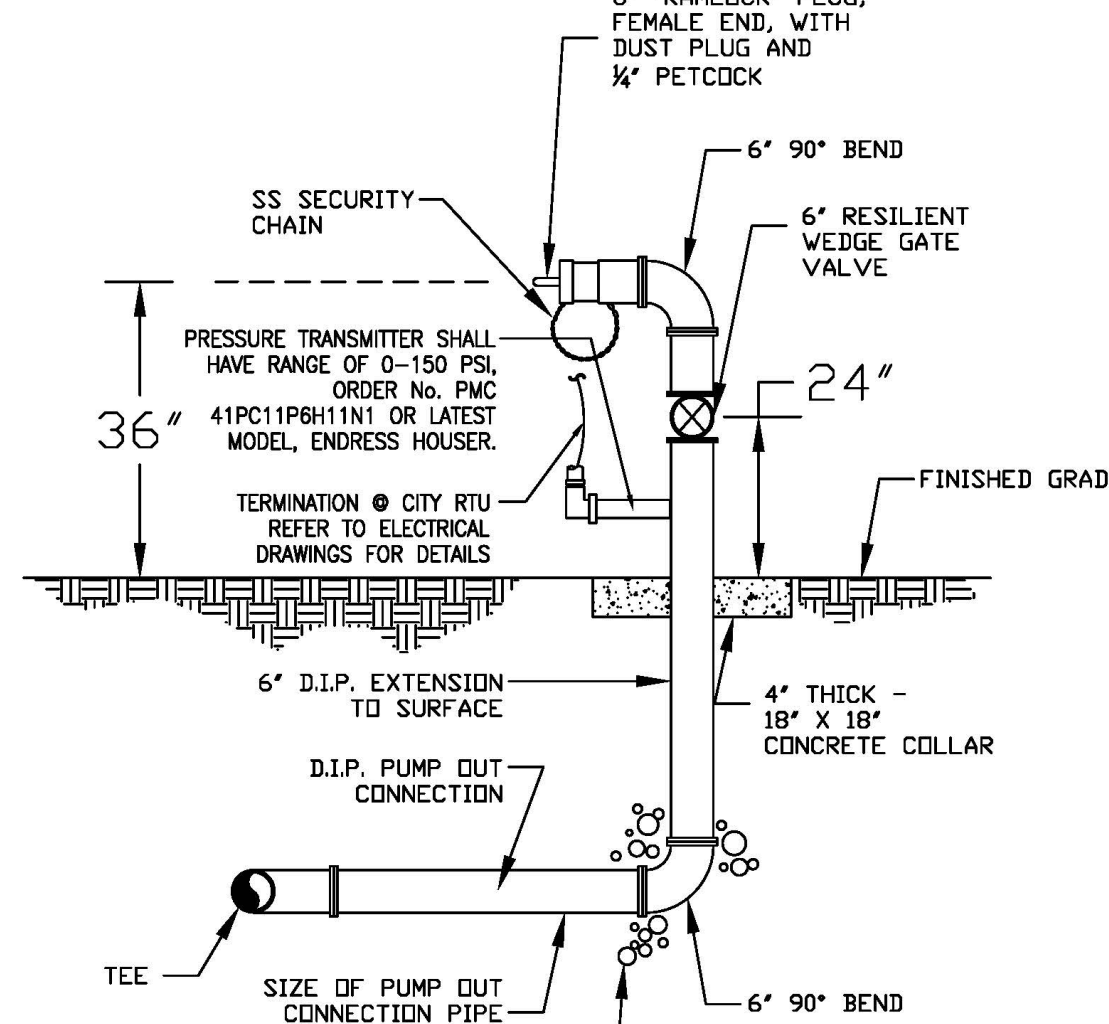
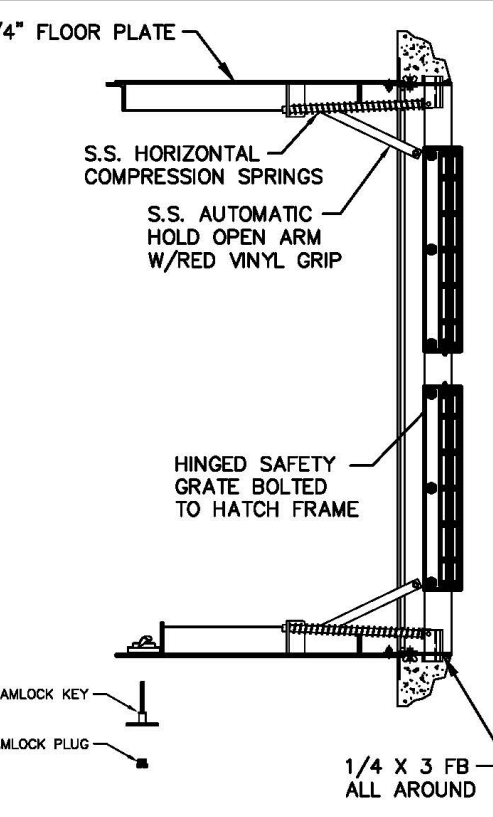


**PLAN**  
N.T.S.

**ALTERNATE DETAIL**  
**(PRECAST CONSTRUCTION)**



**SECTION**  
N.T.S.

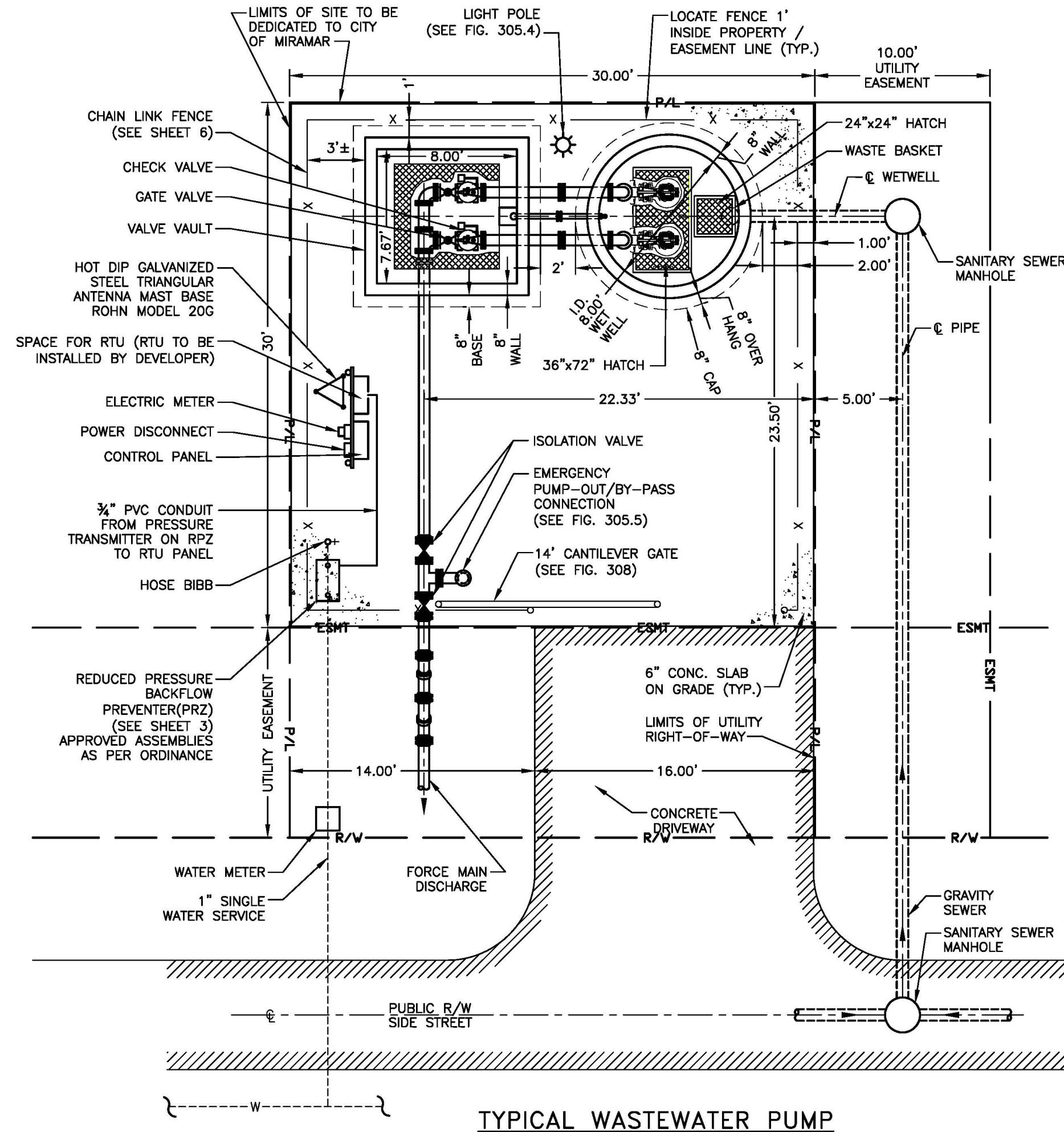


**WASTEWATER PUMP-OUT/BYPASS**  
**CONNECTION WITH PRESSURE**  
**TRANSMITTER**  
N.T.S.

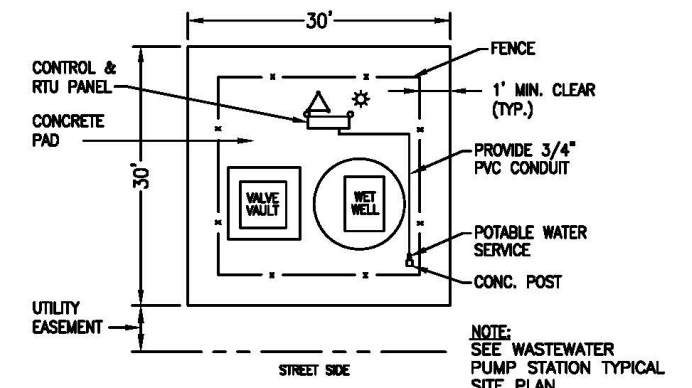
NUMBER OF PUMPS	FORCE MAIN SIZE	WETWELL DIAMETER
2	4"	48"
2	6"	60"
2	8"	72"
2	10"	84"

**ABBREVIATIONS**

ABS	ACRYLONITRILE BUTADIENE STYRENE
CLR	CLEARANCE
DI	DUCTILE IRON
H/FAC	HARNESSED FLANGED ADAPTER COUPLING SPRING & LEVER CHECK VALVE (M&H CO.)
GV	GATE VALVE
PVC	POLYVINYL CHLORIDE
SS	STAINLESS STEEL
PT	PIPE TREAD POINT



**TYPICAL WASTEWATER PUMP**  
**STATION SITE PLAN LAYOUT**



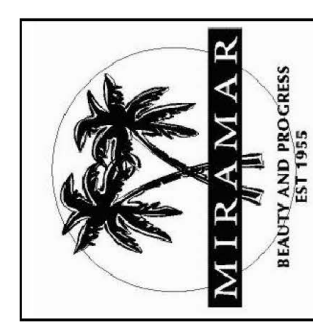
**TYPICAL SITE LAYOUT**  
N.T.S.

- NOTES:**
1. ENGINEER SHALL PROVIDE A SCALED (1"=20' MIN.) SITE SPECIFIC DETAIL.
  2. SITE PLAN TO INCLUDE BENCH MARK AND NORTH ARROW.
  3. 18" WIDE CONCRETE DRIVE IN ACCORDANCE WITH CITY DRIVEWAY STANDARDS.
  4. LANDSCAPE THE SITE PER CITY LAND DEVELOPMENT CODE.
  5. MASTER LIFT STATION TO BE SUPPLIED WITH AUXILIARY GENERATOR SET AND WITH A FUEL TANK IN ACCORDANCE WITH BROWARD COUNTY HEALTH DEPARTMENT REGULATIONS.

NO.	DATE	REVISIONS
1	06/29/18	PERFORM TRANSMITTER BRIDGE, WASTEWATER STATION
2	04/18/18	INCLUDE ALTERNATE HATCH DETAILS
3	07/28/14	GENERAL

**WASTEWATER PUMP STATION**

**CITY OF MIRAMAR**  
**DEPARTMENT OF**  
**CONSTRUCTION & FACILITIES MANAGEMENT**  
**ENGINEERING STANDARDS**



<b>SCALE:</b> N.T.S.
<b>SHEET NO.</b> 5 OF 11