

# Seismic Analysis

## USBM/Velocity Waveform Report

**Serial No:** 5148 v3.67  
**Date:** 08/04/2022 11:03:33  
**Event No:** 11  
**Record Time:** 5.0 s  
**Client:** City of Miramar  
**Operation:** White Rock Quarries  
**Location:** 5276 SW 152 Ave  
**Distance:**  
**Operator:**  
**Comment:**  
**Seismic Trigger:** 0.050 in/s

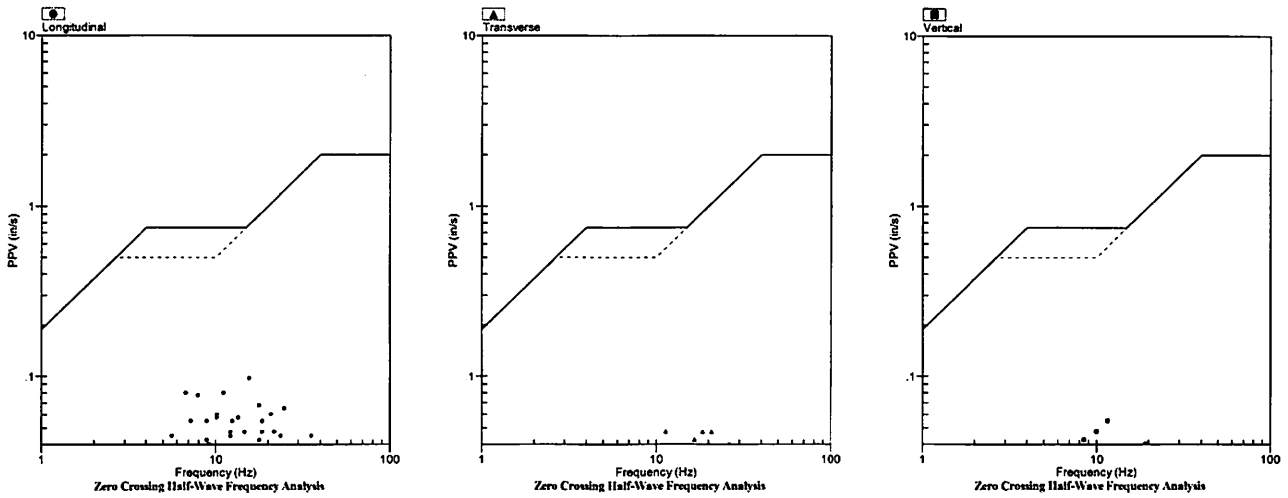
### Summary Data

	L	T	V
<b>PPV (in/s)</b>	0.098	0.048	0.055
<b>FREQ (Hz)</b>	15.6	18.5	11.6
<b>PD (.001")</b>	1.31	1.35	2.64
<b>PPA (g)</b>	0.033	0.026	0.026
<b>Peak Vector Sum:</b>	0.100 in/s		
<b>Peak Air Pressure:</b>	85 db		
	0.00011 PSI @ 1.0 Hz		

### Additional Info:

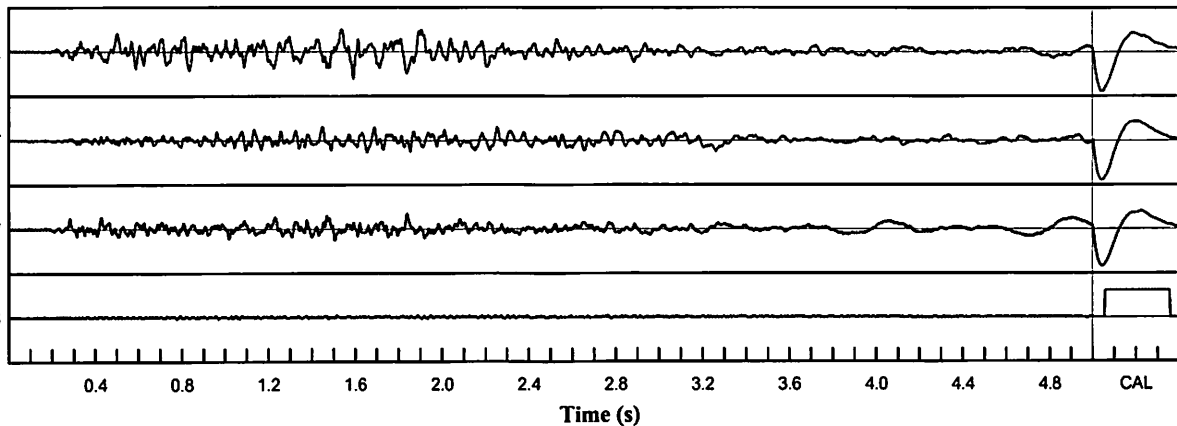
**Shaketable Calibrated:** 06/30/2020  
**By:** GeoSonics Inc.  
 359 Northgate Drive  
 Warrendale, PA 15086 U.S.A.  
 TEL: 724.934.2900 FAX: 724.934.2999

### USBM Safe Blasting Levels



### Velocity Waveform

SN: 5148 Event: 11



### Velocity Waveform Graph Scale

**Time Scale:** 0.100 s  
**Seismic Scale:** +/- 0.160 in/s  
**Sound Scale:** +/- 0.0023 PSI

# Seismic Analysis

## USBM/Velocity Waveform Report

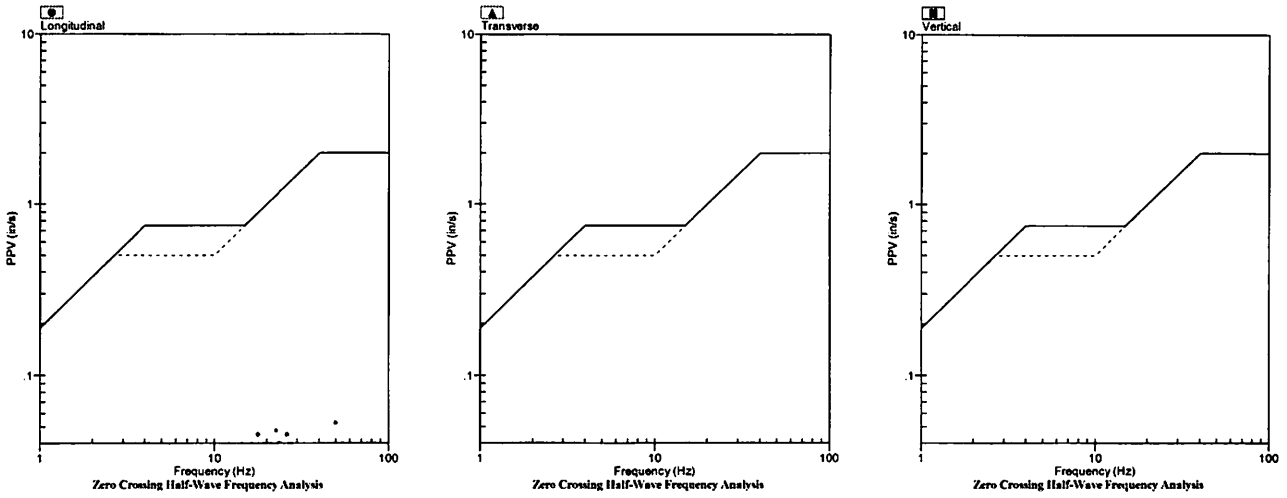
**Serial No:** 5148 v3.67  
**Date:** 08/05/2022 14:33:31  
**Event No:** 12  
**Record Time:** 5.0 s  
**Client:** City of Miramar  
**Operation:** White Rock Quarries  
**Location:** 5276 SW 152 Ave  
**Distance:**  
**Operator:**  
**Comment:**  
**Seismic Trigger:** 0.050 in/s

Summary Data			
	L	T	V
PPV (in/s)	0.055	0.023	0.023
FREQ (Hz)	22.7	15.6	17.2
PD (.001")	0.68	0.56	0.75
PPA (g)	0.026	0.013	0.013
Peak Vector Sum:	0.055 in/s		
Peak Air Pressure:	85 db		
	0.00011 PSI @ 1.0 Hz		

**Additional Info:**

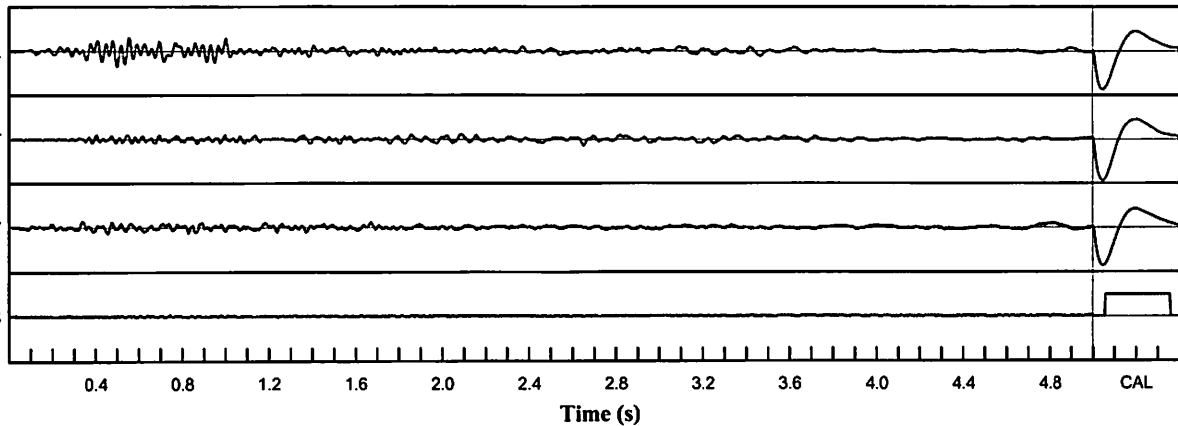
**Shaketable Calibrated:** 06/30/2020  
**By:** GeoSonics Inc.  
 359 Northgate Drive  
 Warrendale, PA 15086 U.S.A.  
 TEL: 724.934.2900 FAX: 724.934.2999

### USBM Safe Blasting Levels



### Velocity Waveform

SN: 5148 Event: 12



**Velocity Waveform Graph Scale**

**Time Scale:** 0.100 s  
**Seismic Scale:** +/- 0.160 in/s  
**Sound Scale:** +/- 0.0023 PSI

# Seismic Analysis

## USBM/Velocity Waveform Report

**Serial No:** 5148 v3.67  
**Date:** 08/10/2022 11:19:04  
**Event No:** 13  
**Record Time:** 5.0 s  
**Client:** City of Miramar  
**Operation:** White Rock Quarries  
**Location:** 5276 SW 152 Ave  
**Distance:**  
**Operator:**  
**Comment:**  
**Seismic Trigger:** 0.050 in/s

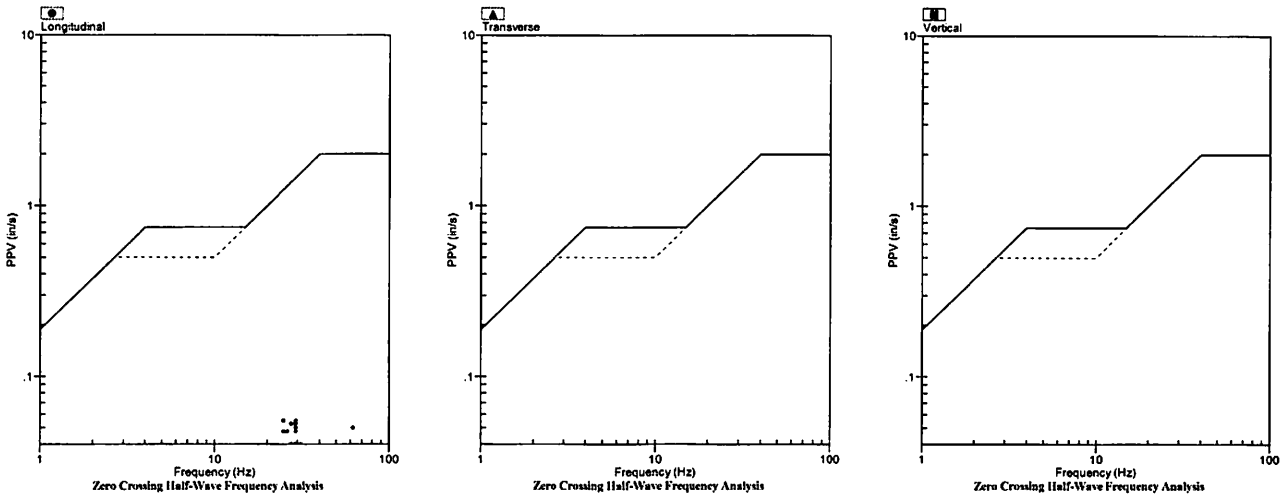
### Summary Data

	L	T	V
PPV (in/s)	0.055	0.020	0.020
FREQ (Hz)	26.3	15.6	19.2
PD (.001")	0.55	0.56	0.38
PPA (g)	0.026	0.013	0.020
Peak Vector Sum:	0.058 in/s		
Peak Air Pressure:	83 db		
	0.00007 PSI @ 1.0 Hz		

### Additional Info:

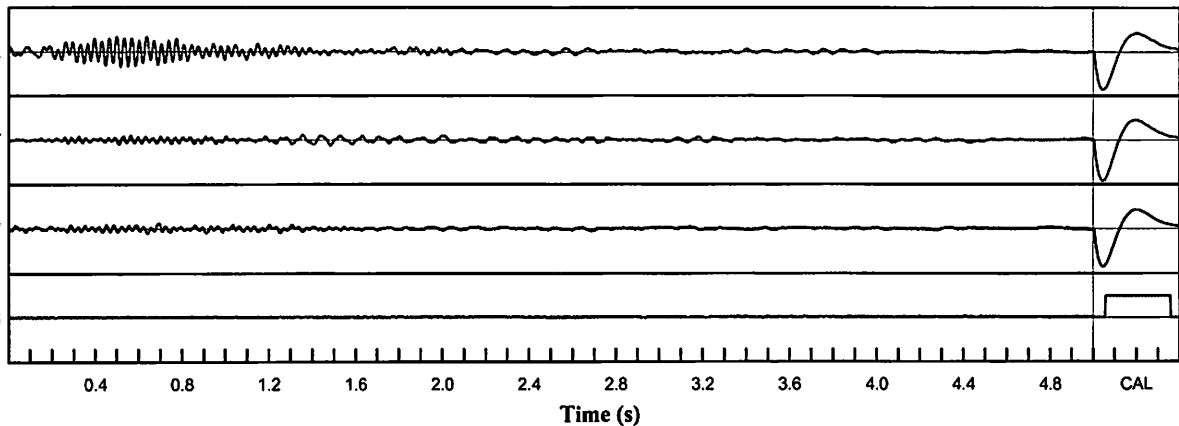
**Shaketable Calibrated:** 06/30/2020  
**By:** GeoSonics Inc.  
 359 Northgate Drive  
 Warrendale, PA 15086 U.S.A.  
 TEL: 724.934.2900 FAX: 724.934.2999

### USBM Safe Blasting Levels



### Velocity Waveform

SN: 5148 Event: 13



### Velocity Waveform Graph Scale

**Time Scale:** 0.100 s  
**Seismic Scale:** +/- 0.160 in/s  
**Sound Scale:** +/- 0.0023 PSI

# Seismic Analysis

## USBM/Velocity Waveform Report

**Serial No:** 5149 v3.67  
**Date:** 08/22/2022 15:30:10  
**Event No:** 1  
**Record Time:** 5.0 s  
**Client:** City of Miramar  
**Operation:** White Rock  
**Location:** 5276 SW 152 Ave  
**Distance:**  
**Operator:**  
**Comment:**  
**Seismic Trigger:** 0.050 in/s

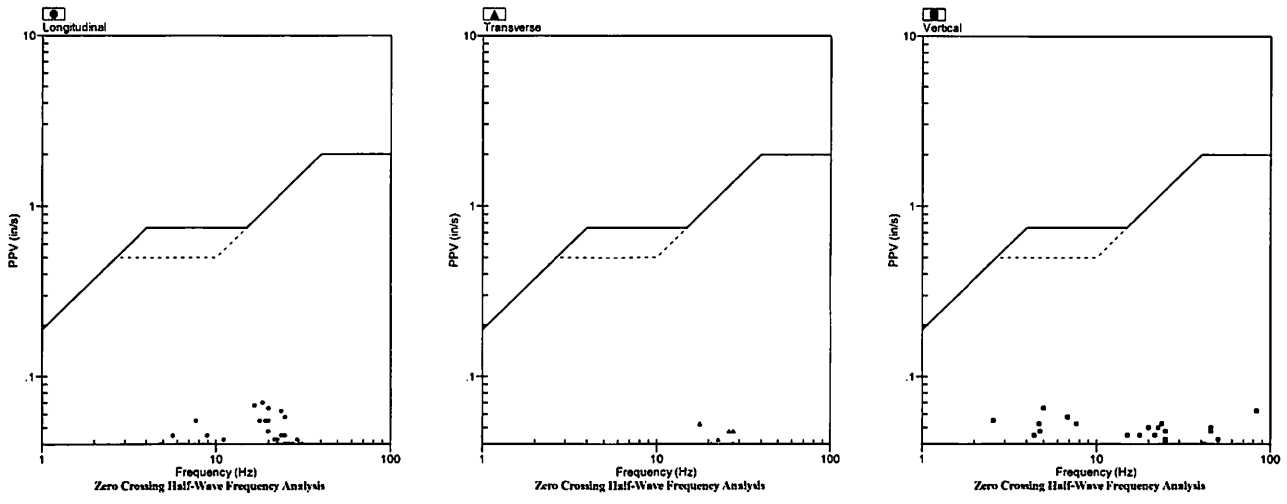
### Summary Data

	L	T	V
<b>PPV (in/s)</b>	0.070	0.053	0.068
<b>FREQ (Hz)</b>	18.5	17.9	35.7
<b>PD (.001")</b>	1.64	1.11	2.34
<b>PPA (g)</b>	0.039	0.033	0.039
<b>Peak Vector Sum:</b>	0.083 in/s		
<b>Peak Air Pressure:</b>	82 db		
	0.00009 PSI @ 83.3 Hz		

### Additional Info:

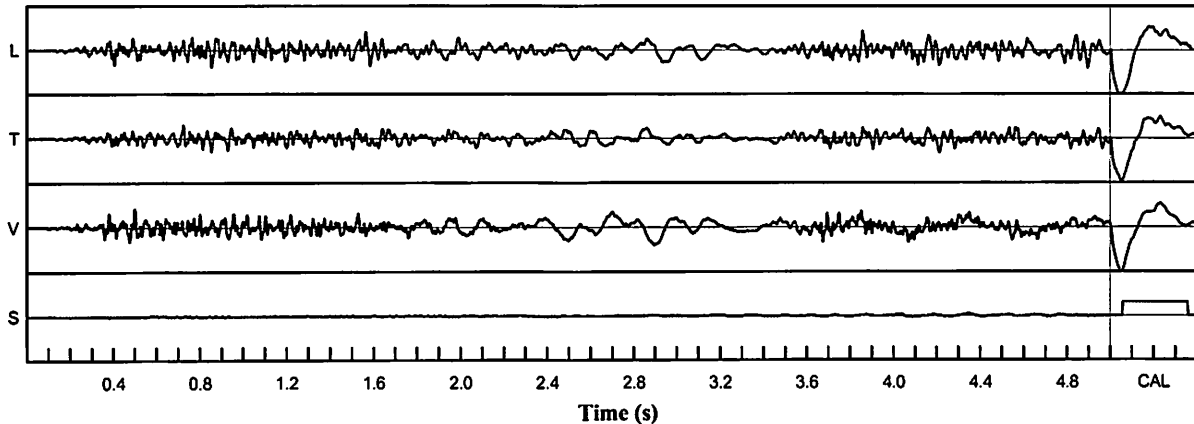
**Shaketable Calibrated:** 03/12/2021  
**By:** GeoSonics Inc.  
 359 Northgate Drive  
 Warrendale, PA 15086 U.S.A.  
 TEL: 724.934.2900 FAX: 724.934.2999

### USBM Safe Blasting Levels



### Velocity Waveform

SN: 5149 Event: 1



### Velocity Waveform Graph Scale

**Time Scale:** 0.100 s  
**Seismic Scale:** +/- 0.160 in/s  
**Sound Scale:** +/- 0.0023 PSI

# Seismic Analysis

## USBM/Velocity Waveform Report

**Serial No:** 5149 v3.67  
**Date:** 08/24/2022 13:30:45  
**Event No:** 2  
**Record Time:** 5.0 s  
**Client:** City of Miramar  
**Operation:** White Rock  
**Location:** 5276 SW 152 Ave  
**Distance:**  
**Operator:**  
**Comment:**  
**Seismic Trigger:** 0.050 in/s

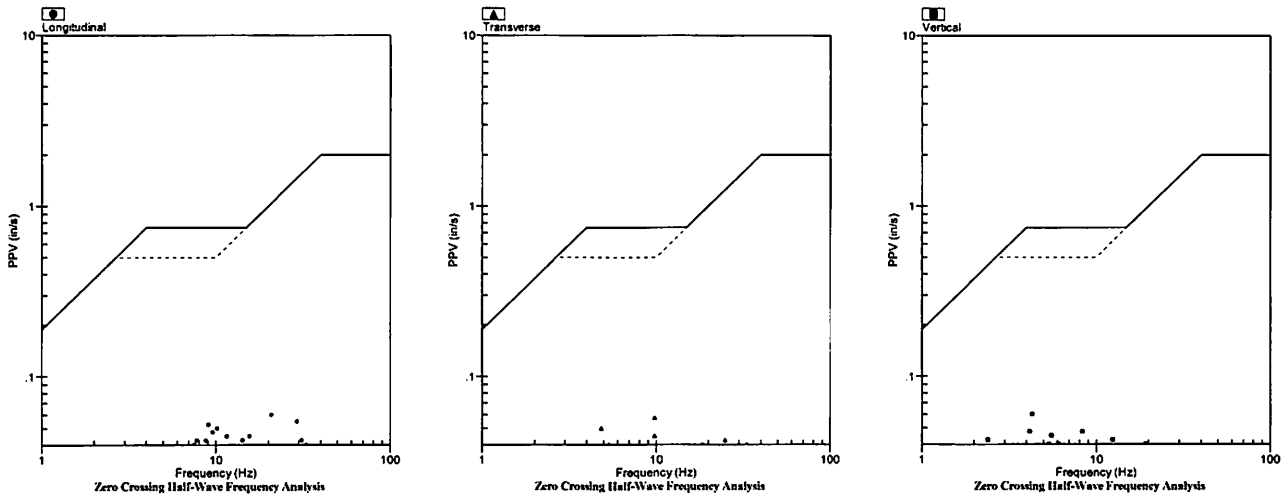
### Summary Data

	L	T	V
<b>PPV (in/s)</b>	0.060	0.058	0.060
<b>FREQ (Hz)</b>	20.8	9.8	4.3
<b>PD (.001")</b>	1.31	1.37	2.41
<b>PPA (g)</b>	0.033	0.026	0.026
<b>Peak Vector Sum:</b>	0.068 in/s		
<b>Peak Air Pressure:</b>	86 db		
	0.00012 PSI @ 2.7 Hz		

### Additional Info:

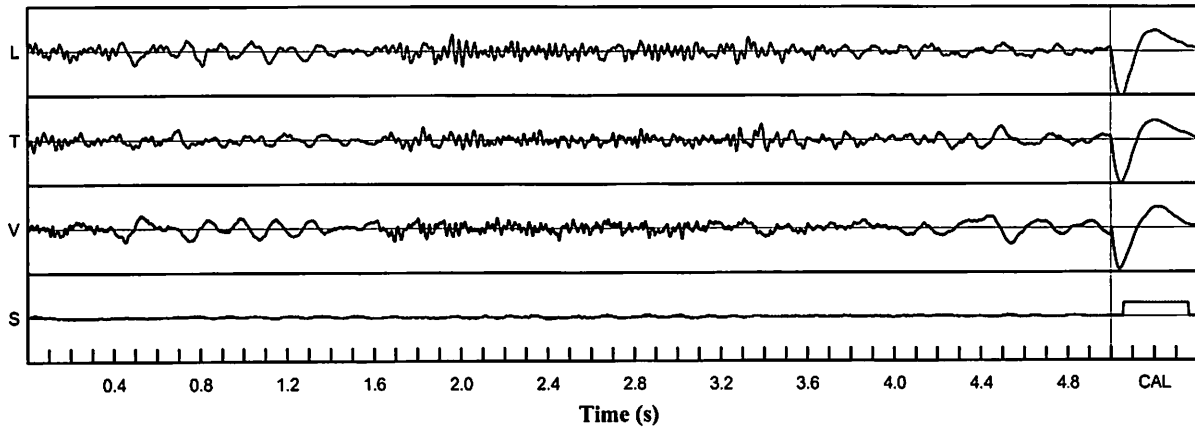
**Shaketable Calibrated:** 03/12/2021  
**By:** GeoSonics Inc.  
 359 Northgate Drive  
 Warrendale, PA 15086 U.S.A.  
 TEL: 724.934.2900 FAX: 724.934.2999

### USBM Safe Blasting Levels



### Velocity Waveform

SN: 5149 Event: 2



### Velocity Waveform Graph Scale

**Time Scale:** 0.100 s  
**Seismic Scale:** +/- 0.160 in/s  
**Sound Scale:** +/- 0.0023 PSI

# Seismic Analysis

## USBM/Velocity Waveform Report

**Serial No:** 5149 v3.67  
**Date:** 08/26/2022 13:15:38  
**Event No:** 3  
**Record Time:** 5.0 s  
**Client:** City of Miramar  
**Operation:** White Rock  
**Location:** 5276 SW 152 Ave  
**Distance:**  
**Operator:**  
**Comment:**  
**Seismic Trigger:** 0.050 in/s

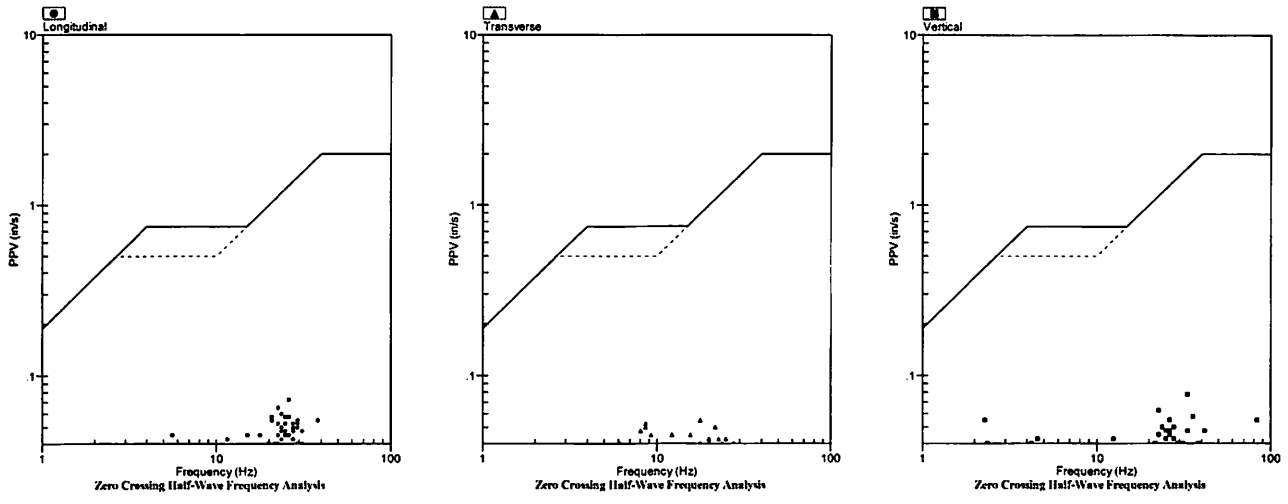
### Summary Data

	L	T	V
PPV (in/s)	0.073	0.055	0.078
FREQ (Hz)	26.3	17.9	33.3
PD (.001")	1.28	1.09	2.62
PPA (g)	0.039	0.026	0.039
Peak Vector Sum:	0.085 in/s		
Peak Air Pressure:	103 db		
	0.00050 PSI @ 3.5 Hz		

### Additional Info:

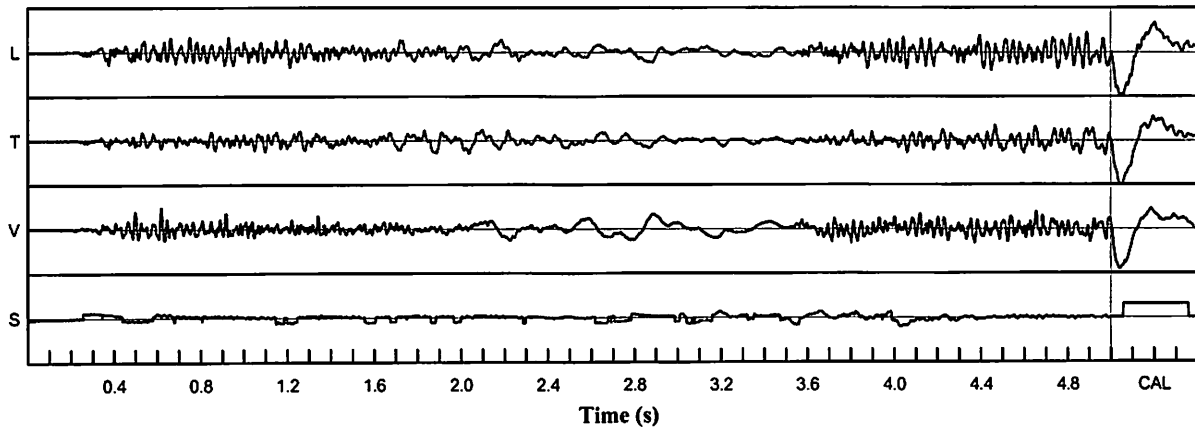
**Shaketable Calibrated:** 03/12/2021  
**By:** GeoSonics Inc.  
 359 Northgate Drive  
 Warrendale, PA 15086 U.S.A.  
 TEL: 724.934.2900 FAX: 724.934.2999

### USBM Safe Blasting Levels



### Velocity Waveform

SN: 5149 Event: 3



### Velocity Waveform Graph Scale

**Time Scale:** 0.100 s  
**Seismic Scale:** +/- 0.160 in/s  
**Sound Scale:** +/- 0.0023 PSI

# Seismic Analysis

## USBM/Velocity Waveform Report

**Serial No:** 5149 v3.67  
**Date:** 08/30/2022 13:03:29  
**Event No:** 4  
**Record Time:** 5.0 s  
**Client:** City of Miramar  
**Operation:** White Rock  
**Location:** 5276 SW 152 Ave  
**Distance:**  
**Operator:**  
**Comment:**  
**Seismic Trigger:** 0.050 in/s

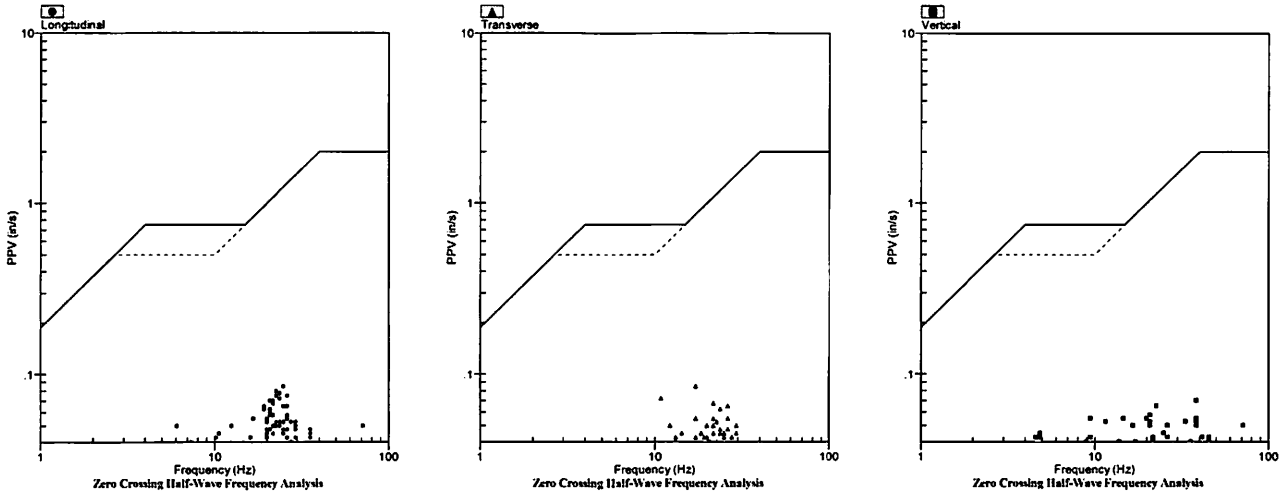
### Summary Data

	L	T	V
<b>PPV (in/s)</b>	0.085	0.085	0.070
<b>FREQ (Hz)</b>	25.0	17.2	38.5
<b>PD (.001")</b>	1.24	1.08	1.74
<b>PPA (g)</b>	0.046	0.033	0.046
<b>Peak Vector Sum:</b>	0.110 in/s		
<b>Peak Air Pressure:</b>	86 db		
	0.00012 PSI @ 1.0 Hz		

### Additional Info:

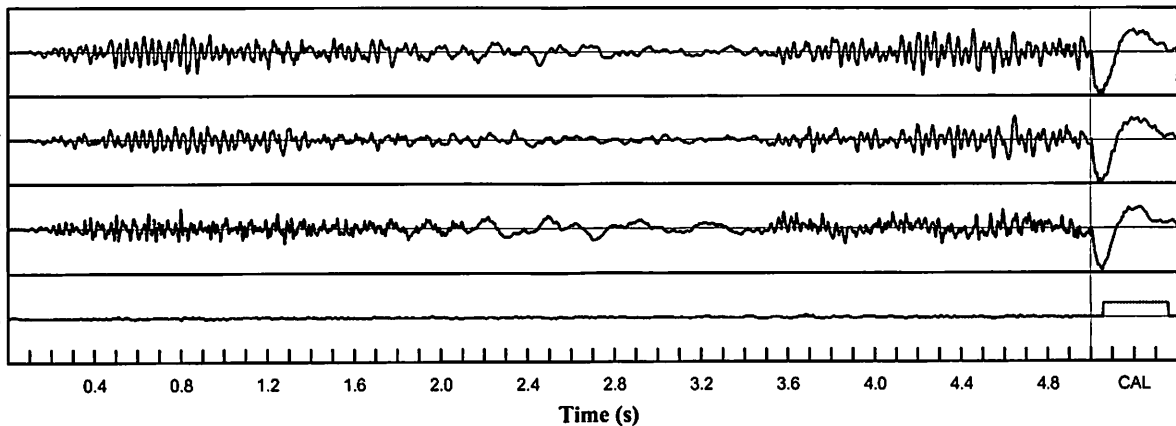
**Shaketable Calibrated:** 03/12/2021  
**By:** GeoSonics Inc.  
 359 Northgate Drive  
 Warrendale, PA 15086 U.S.A.  
 TEL: 724.934.2900 FAX: 724.934.2999

### USBM Safe Blasting Levels



### Velocity Waveform

SN: 5149 Event: 4



### Velocity Waveform Graph Scale

**Time Scale:** 0.100 s  
**Seismic Scale:** +/- 0.160 in/s  
**Sound Scale:** +/- 0.0023 PSI

# Seismic Analysis

## USBM/Velocity Waveform Report

**Serial No:** 5149 v3.67  
**Date:** 08/31/2022 15:46:01  
**Event No:** 5  
**Record Time:** 5.0 s  
**Client:** City of Miramar  
**Operation:** White Rock  
**Location:** 5276 SW 152 Ave  
**Distance:**  
**Operator:**  
**Comment:**  
**Seismic Trigger:** 0.050 in/s

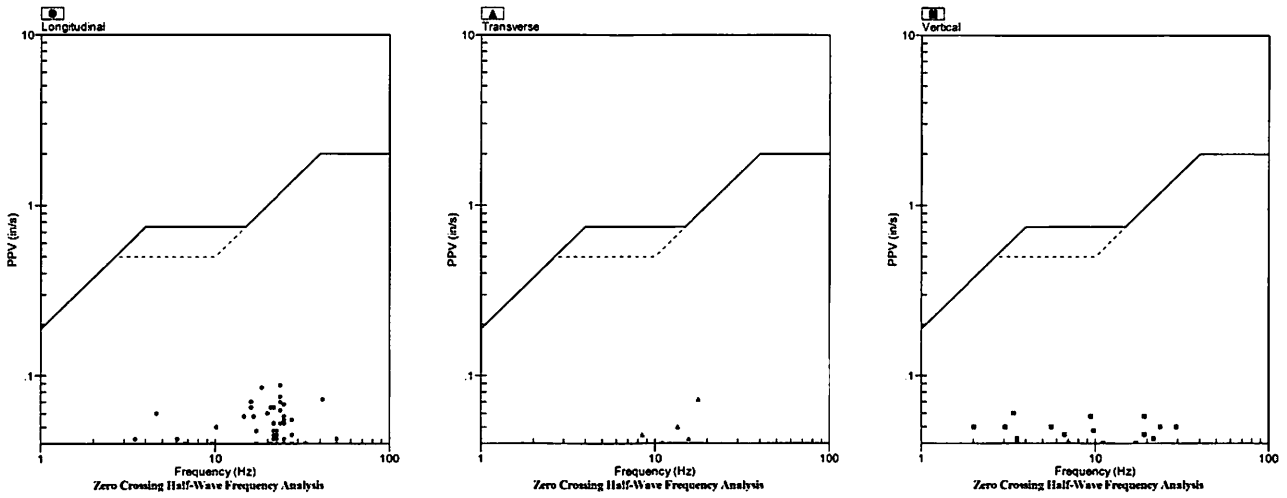
### Summary Data

	L	T	V
PPV (in/s)	0.088	0.073	0.060
FREQ (Hz)	23.8	17.9	3.4
PD (.001")	1.61	1.23	3.35
PPA (g)	0.052	0.026	0.039
Peak Vector Sum:	0.090 in/s		
Peak Air Pressure:	104 db		
	0.00055 PSI @ 3.7 Hz		

### Additional Info:

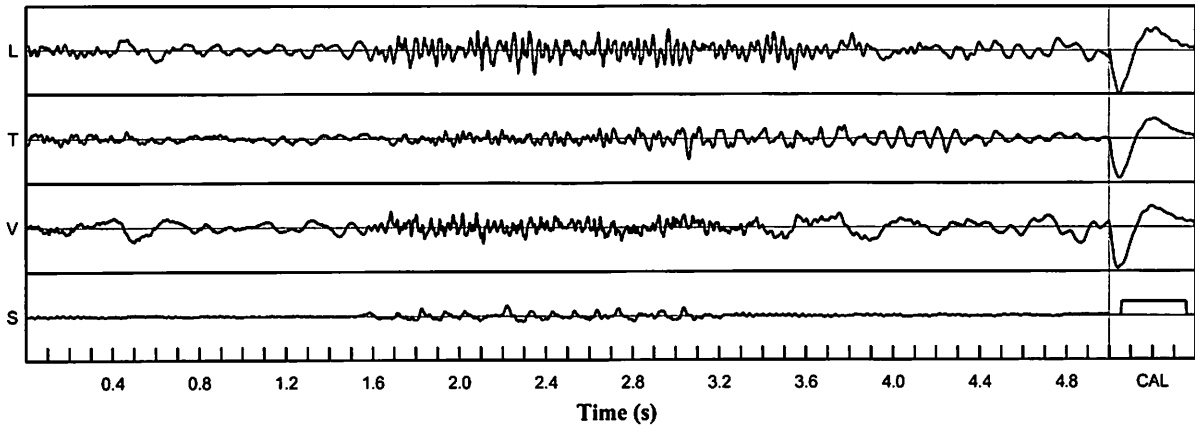
**Shaketable Calibrated:** 03/12/2021  
**By:** GeoSonics Inc.  
 359 Northgate Drive  
 Warrendale, PA 15086 U.S.A.  
 TEL: 724.934.2900 FAX: 724.934.2999

### USBM Safe Blasting Levels



### Velocity Waveform

SN: 5149 Event: 5



### Velocity Waveform Graph Scale

**Time Scale:** 0.100 s  
**Seismic Scale:** +/- 0.160 in/s  
**Sound Scale:** +/- 0.0023 PSI



# Seismic Analysis

## USBM/Velocity Waveform Report

**Serial No:** 5149 v3.67  
**Date:** 09/02/2022 10:01:04  
**Event No:** 6  
**Record Time:** 5.0 s  
**Client:** City of Miramar  
**Operation:** White Rock  
**Location:** 5276 SW 152 Ave  
**Distance:**  
**Operator:**  
**Comment:**  
**Seismic Trigger:** 0.050 in/s

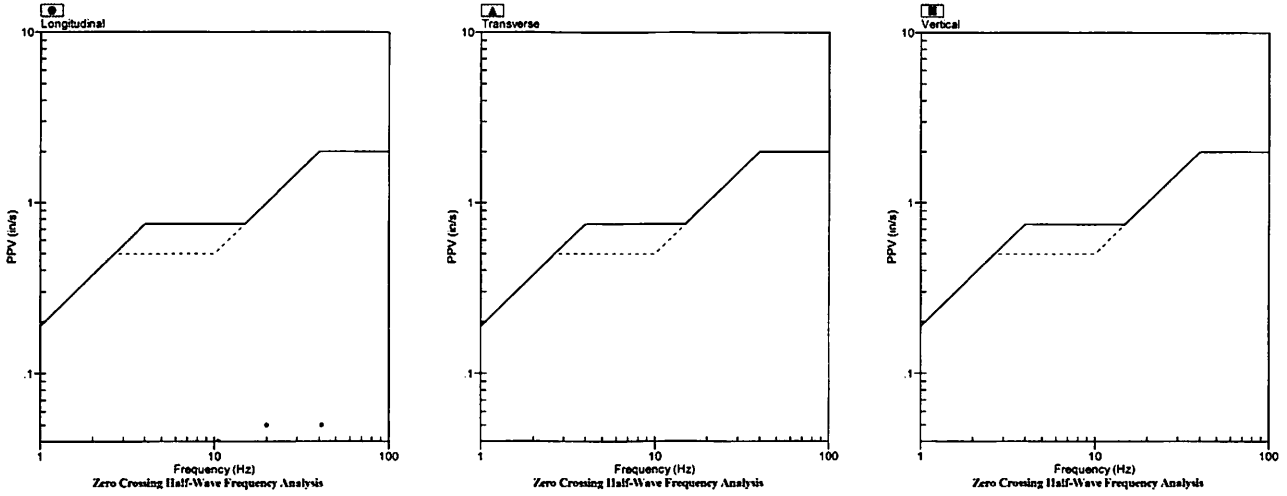
### Summary Data

	L	T	V
PPV (in/s)	0.053	0.028	0.033
FREQ (Hz)	20.0	8.5	19.2
PD (.001")	0.76	0.85	0.82
PPA (g)	0.020	0.013	0.013
Peak Vector Sum:	0.055 in/s		
Peak Air Pressure:	76 db		
	0.00002 PSI @ 1.0 Hz		

### Additional Info:

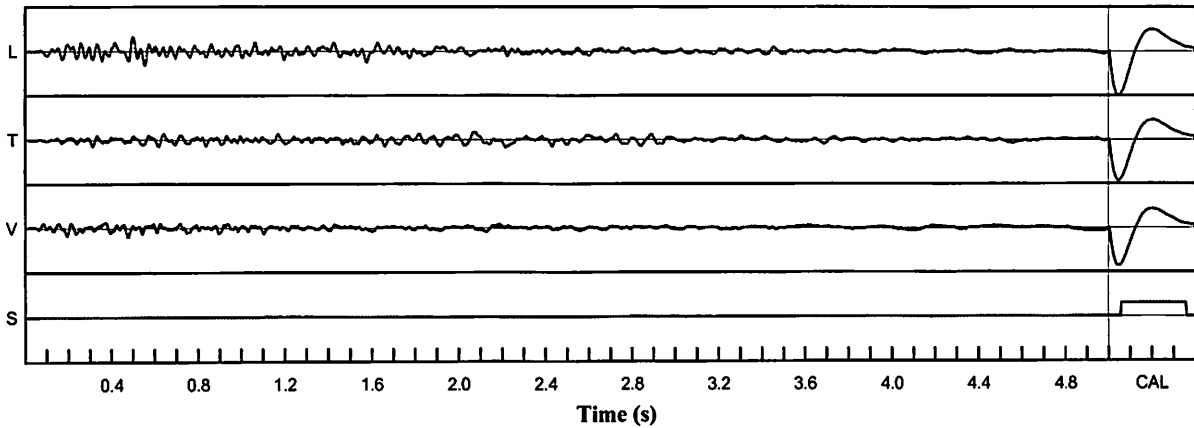
**Shaketable Calibrated:** 03/12/2021  
**By:** GeoSonics Inc.  
 359 Northgate Drive  
 Warrendale, PA 15086 U.S.A.  
 TEL: 724.934.2900 FAX: 724.934.2999

### USBM Safe Blasting Levels



### Velocity Waveform

SN: 5149 Event: 6



### Velocity Waveform Graph Scale

**Time Scale:** 0.100 s  
**Seismic Scale:** +/- 0.160 in/s  
**Sound Scale:** +/- 0.0023 PSI

# Seismic Analysis

## USBM/Velocity Waveform Report

**Serial No:** 5149 v3.67  
**Date:** 09/06/2022 13:01:19  
**Event No:** 7  
**Record Time:** 5.0 s  
**Client:** City of Miramar  
**Operation:** White Rock  
**Location:** 5276 SW 152 Ave  
**Distance:**  
**Operator:**  
**Comment:**  
**Seismic Trigger:** 0.050 in/s

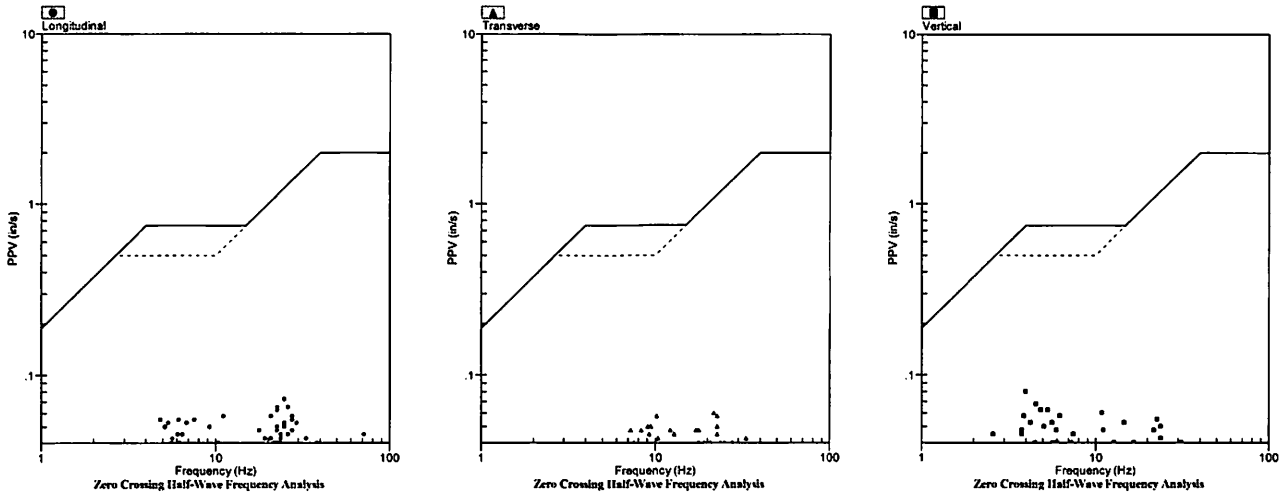
### Summary Data

	L	T	V
<b>PPV (in/s)</b>	0.073	0.060	0.080
<b>FREQ (Hz)</b>	25.0	21.7	4.0
<b>PD (.001")</b>	1.78	1.29	3.49
<b>PPA (g)</b>	0.033	0.033	0.039
<b>Peak Vector Sum:</b>	0.083 in/s		
<b>Peak Air Pressure:</b>	92 db		
	0.00020 PSI @ 6.0 Hz		

### Additional Info:

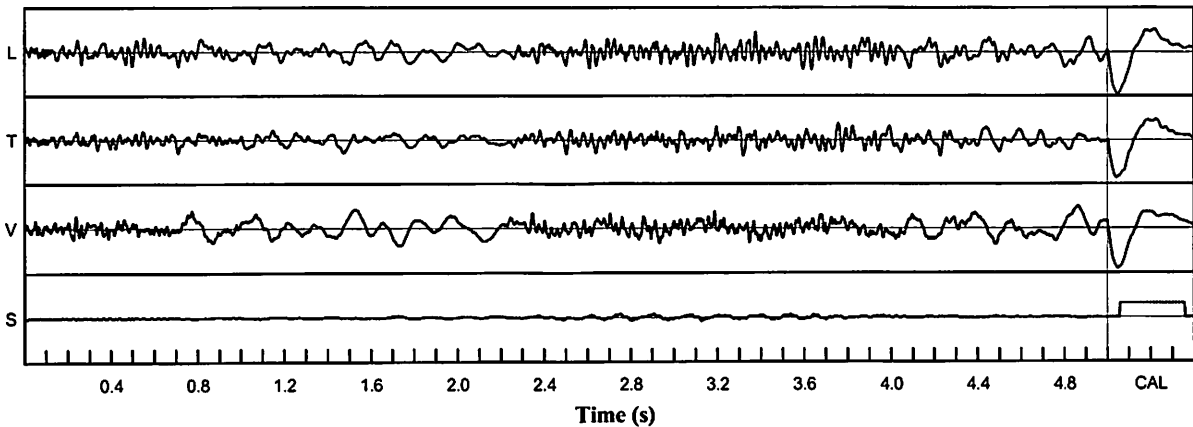
**Shaketable Calibrated:** 03/12/2021  
**By:** GeoSonics Inc.  
 359 Northgate Drive  
 Warrendale, PA 15086 U.S.A.  
 TEL: 724.934.2900 FAX: 724.934.2999

### USBM Safe Blasting Levels



### Velocity Waveform

SN: 5149 Event: 7



### Velocity Waveform Graph Scale

**Time Scale:** 0.100 s  
**Seismic Scale:** +/- 0.160 in/s  
**Sound Scale:** +/- 0.0023 PSI

# Seismic Analysis

## USBM/Velocity Waveform Report

**Serial No:** 5148 v3.67  
**Date:** 09/08/2022 16:17:10  
**Event No:** 14  
**Record Time:** 5.0 s  
**Client:** City of Miramar  
**Operation:** White Rock Quarries  
**Location:** 5276 SW 152 Ave  
**Distance:**  
**Operator:**  
**Comment:**  
**Seismic Trigger:** 0.050 in/s

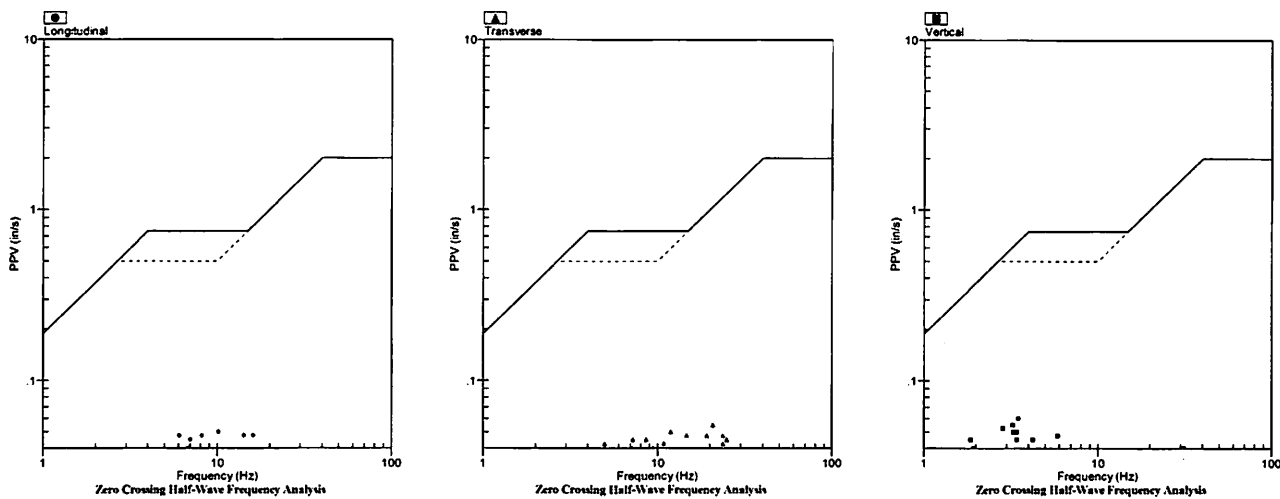
### Summary Data

	L	T	V
<b>PPV (in/s)</b>	0.050	0.055	0.060
<b>FREQ (Hz)</b>	8.1	20.8	3.5
<b>PD (.001")</b>	1.30	1.45	2.80
<b>PPA (g)</b>	0.026	0.026	0.026
<b>Peak Vector Sum:</b>	0.090 in/s		
<b>Peak Air Pressure:</b>	91 db		
	0.00025 PSI @ 4.3 Hz		

### Additional Info:

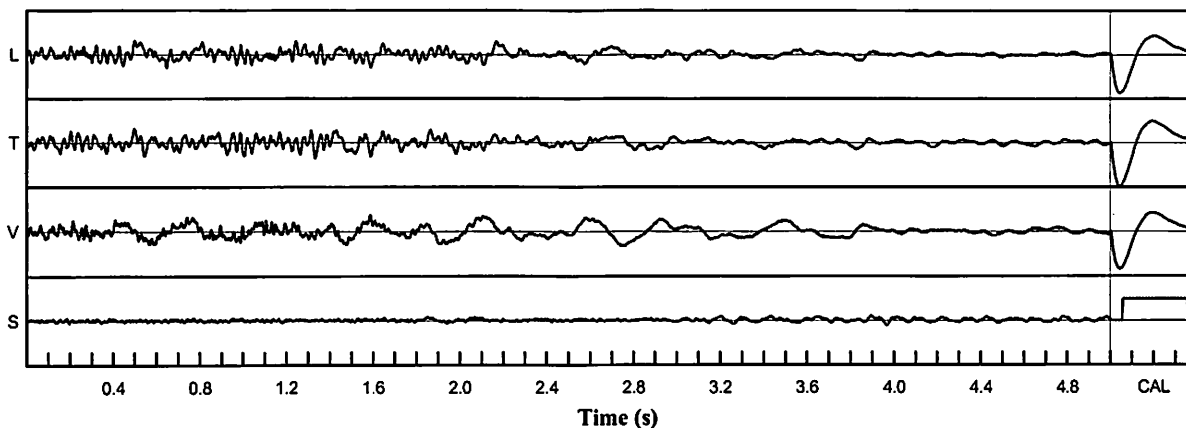
**Shaketable Calibrated:** 06/30/2020  
**By:** GeoSonics Inc.  
 359 Northgate Drive  
 Warrendale, PA 15086 U.S.A.  
 TEL: 724.934.2900 FAX: 724.934.2999

### USBM Safe Blasting Levels



### Velocity Waveform

SN: 5148 Event: 14



### Velocity Waveform Graph Scale

**Time Scale:** 0.100 s  
**Seismic Scale:** +/- 0.160 in/s  
**Sound Scale:** +/- 0.0023 PSI

# Seismic Analysis

## USBM/Velocity Waveform Report

**Serial No:** 5148 v3.67  
**Date:** 09/09/2022 15:41:17  
**Event No:** 15  
**Record Time:** 5.0 s  
**Client:** City of Miramar  
**Operation:** White Rock Quarries  
**Location:** 5276 SW 152 Ave  
**Distance:**  
**Operator:**  
**Comment:**  
**Seismic Trigger:** 0.050 in/s

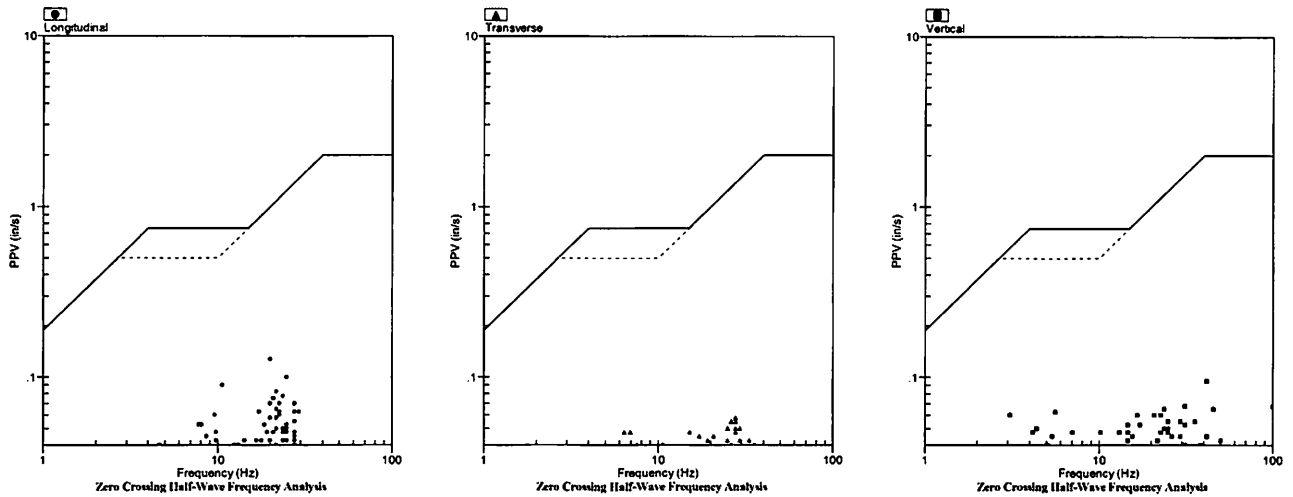
### Summary Data

	L	T	V
PPV (in/s)	0.128	0.058	0.095
FREQ (Hz)	20.0	27.8	41.7
PD (.001")	1.18	1.13	2.14
PPA (g)	0.052	0.033	0.059
Peak Vector Sum:	0.140 in/s		
Peak Air Pressure:	98 db		
	0.00039 PSI @ 13.9 Hz		

### Additional Info:

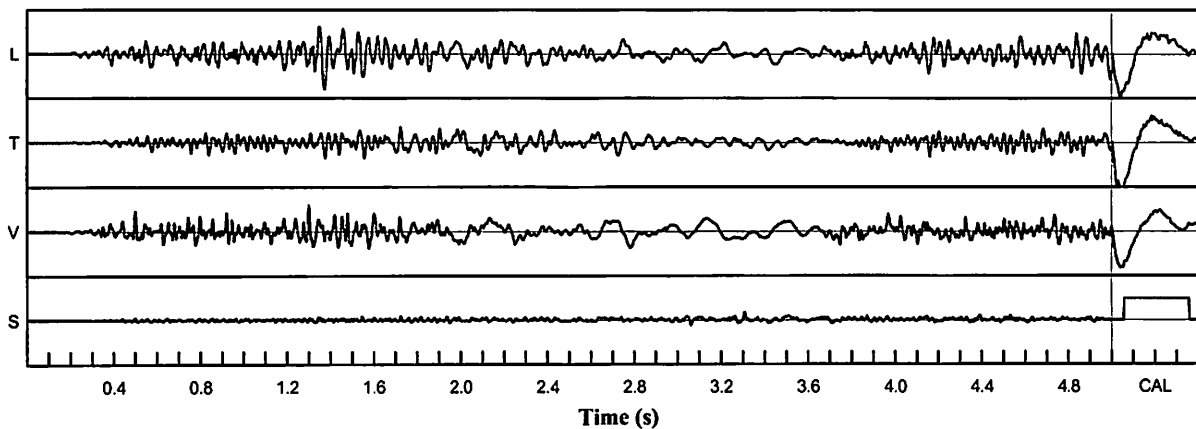
**Shaketable Calibrated:** 06/30/2020  
**By:** GeoSonics Inc.  
 359 Northgate Drive  
 Warrendale, PA 15086 U.S.A.  
 TEL: 724.934.2900 FAX: 724.934.2999

### USBM Safe Blasting Levels



### Velocity Waveform

SN: 5148 Event: 15



### Velocity Waveform Graph Scale

**Time Scale:** 0.100 s  
**Seismic Scale:** +/- 0.160 in/s  
**Sound Scale:** +/- 0.0023 PSI

# Seismic Analysis

## USBM/Velocity Waveform Report

**Serial No:** 5148 v3.67  
**Date:** 09/12/2022 11:35:29  
**Event No:** 16  
**Record Time:** 5.0 s  
**Client:** City of Miramar  
**Operation:** White Rock Quarries  
**Location:** 5276 SW 152 Ave  
**Distance:**  
**Operator:**  
**Comment:**  
**Seismic Trigger:** 0.050 in/s

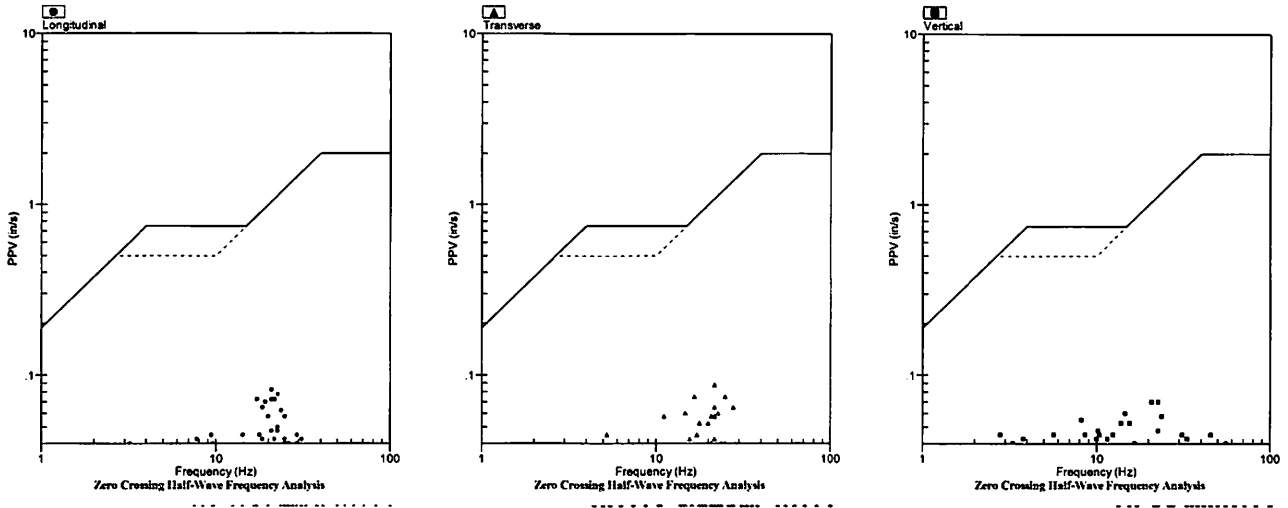
### Summary Data

	L	T	V
<b>PPV (in/s)</b>	0.083	0.088	0.070
<b>FREQ (Hz)</b>	20.8	21.7	22.7
<b>PD (.001")</b>	1.05	1.17	2.04
<b>PPA (g)</b>	0.039	0.039	0.039
<b>Peak Vector Sum:</b>	0.110 in/s		
<b>Peak Air Pressure:</b>	93 db		
	0.00028 PSI @ 8.5 Hz		

### Additional Info:

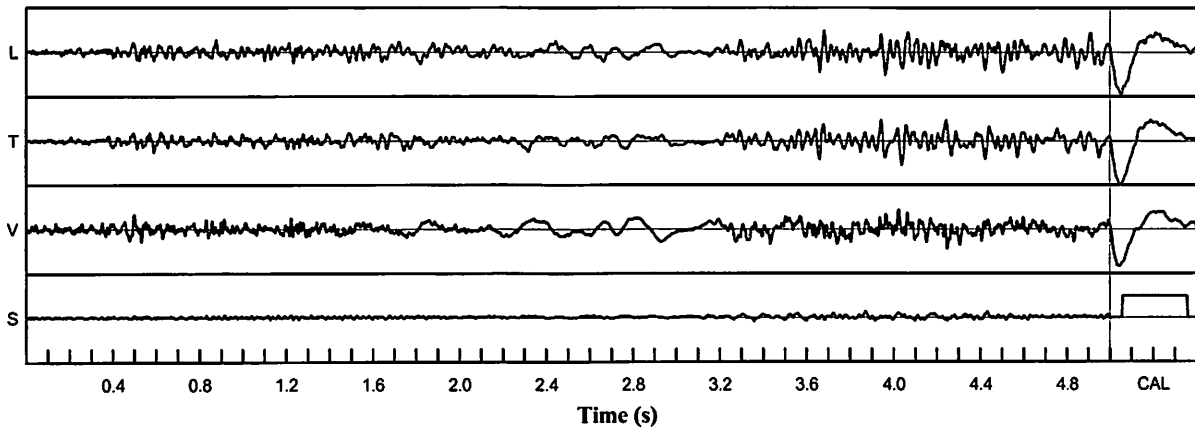
**Shaketable Calibrated:** 06/30/2020  
**By:** GeoSonics Inc.  
 359 Northgate Drive  
 Warrendale, PA 15086 U.S.A.  
 TEL: 724.934.2900 FAX: 724.934.2999

### USBM Safe Blasting Levels



### Velocity Waveform

SN: 5148 Event: 16



### Velocity Waveform Graph Scale

**Time Scale:** 0.100 s  
**Seismic Scale:** +/- 0.160 in/s  
**Sound Scale:** +/- 0.0023 PSI

# Seismic Analysis

## USBM/Velocity Waveform Report

**Serial No:** 5148 v3.67  
**Date:** 09/16/2022 11:42:10  
**Event No:** 17  
**Record Time:** 5.0 s  
**Client:** City of Miramar  
**Operation:** White Rock Quarries  
**Location:** 5276 SW 152 Ave  
**Distance:**  
**Operator:**  
**Comment:**  
**Seismic Trigger:** 0.050 in/s

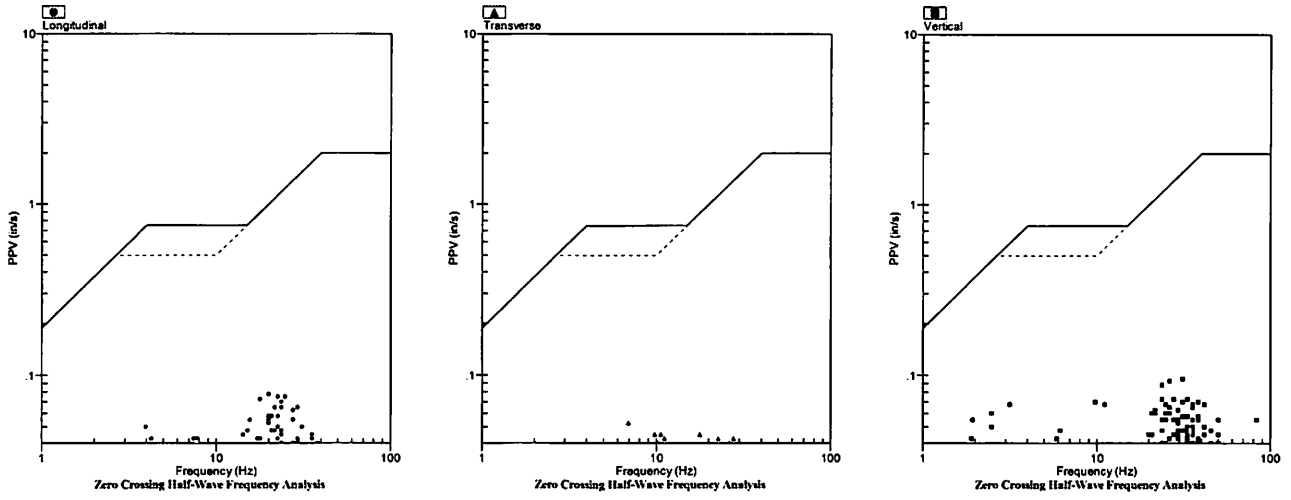
### Summary Data

	L	T	V
<b>PPV (in/s)</b>	0.078	0.053	0.095
<b>FREQ (Hz)</b>	20.0	6.9	31.3
<b>PD (.001")</b>	1.75	1.09	3.32
<b>PPA (g)</b>	0.033	0.026	0.046
<b>Peak Vector Sum:</b>	0.100 in/s		
<b>Peak Air Pressure:</b>	95 db		
	0.00032 PSI @ 41.7 Hz		

### Additional Info:

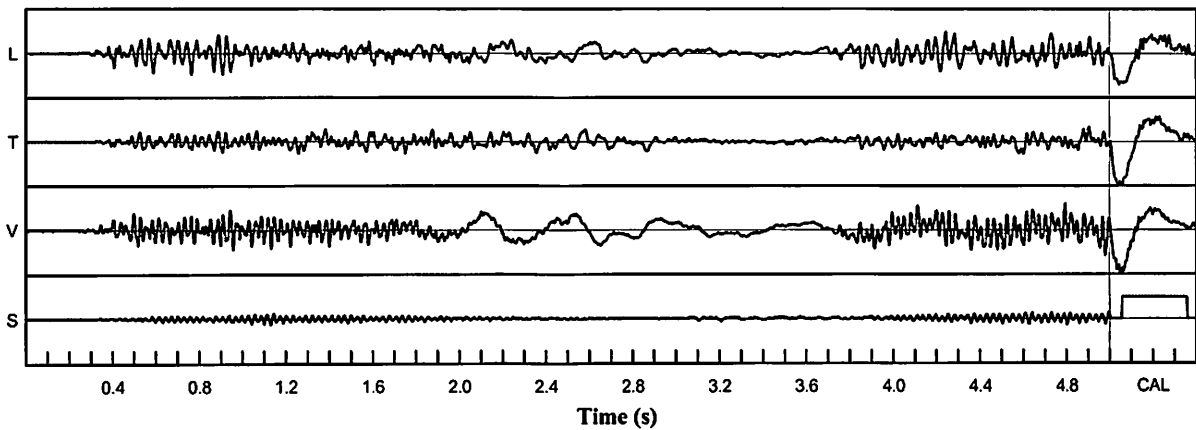
**Shaketable Calibrated:** 06/30/2020  
**By:** GeoSonics Inc.  
 359 Northgate Drive  
 Warrendale, PA 15086 U.S.A.  
 TEL: 724.934.2900 FAX: 724.934.2999

### USBM Safe Blasting Levels



### Velocity Waveform

SN: 5148 Event: 17



### Velocity Waveform Graph Scale

**Time Scale:** 0.100 s  
**Seismic Scale:** +/- 0.160 in/s  
**Sound Scale:** +/- 0.0023 PSI

# Seismic Analysis

## USBM/Velocity Waveform Report

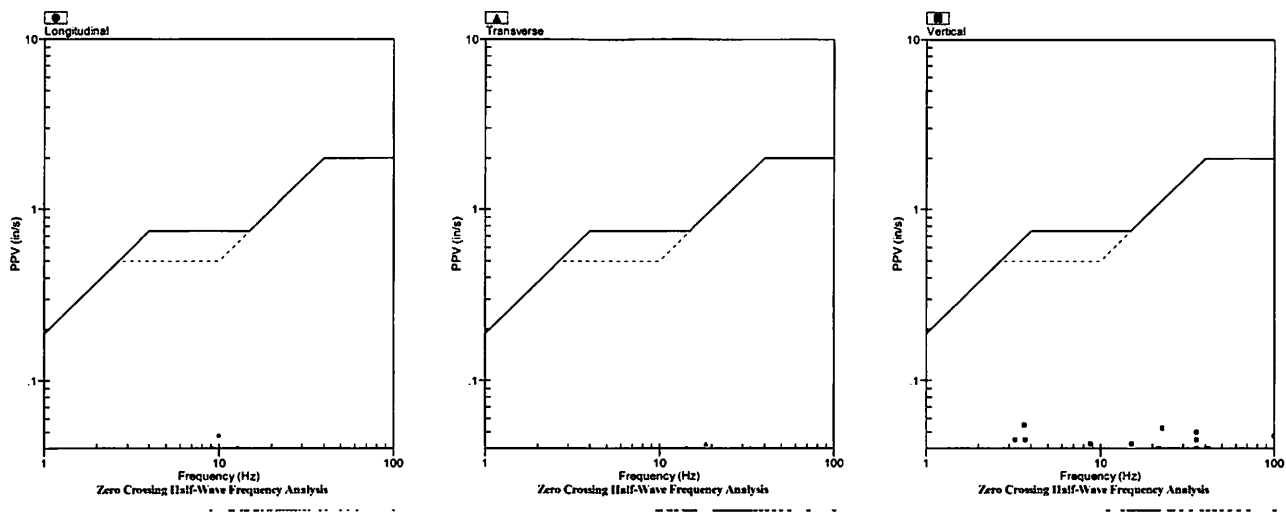
**Serial No:** 5148 v3.67  
**Date:** 09/20/2022 15:37:45  
**Event No:** 18  
**Record Time:** 5.0 s  
**Client:** City of Miramar  
**Operation:** White Rock Quarries  
**Location:** 5276 SW 152 Ave  
**Distance:**  
**Operator:**  
**Comment:**  
**Seismic Trigger:** 0.050 in/s

	<b>L</b>	<b>T</b>	<b>V</b>
<b>PPV (in/s)</b>	0.048	0.043	0.055
<b>FREQ (Hz)</b>	10.0	18.5	35.7
<b>PD (.001")</b>	1.06	0.99	1.71
<b>PPA (g)</b>	0.026	0.026	0.039
<b>Peak Vector Sum:</b>	0.063 in/s		
<b>Peak Air Pressure:</b>	87 db		
	0.00014 PSI @ 1.0 Hz		

**Additional Info:**

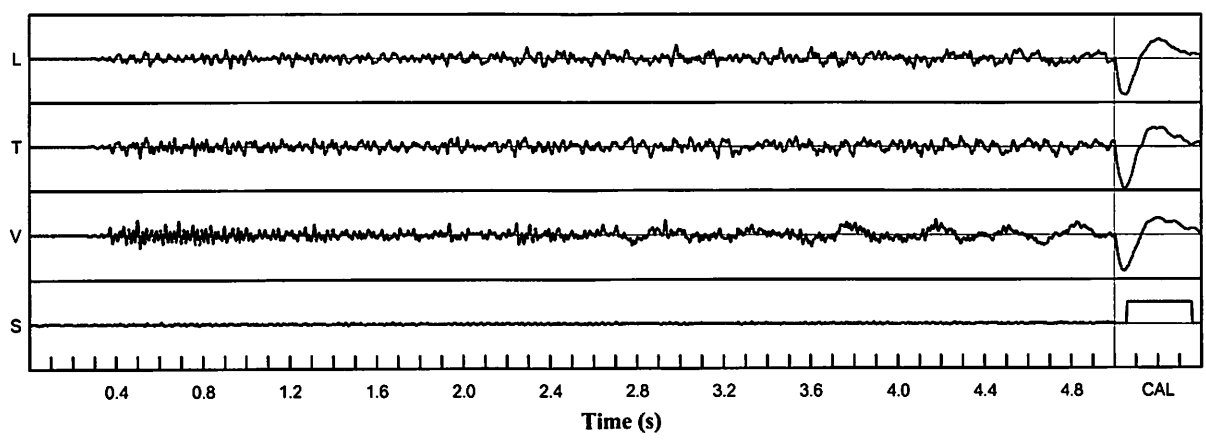
**Shaketable Calibrated:** 06/30/2020  
**By:** GeoSonics Inc.  
 359 Northgate Drive  
 Warrendale, PA 15086 U.S.A.  
 TEL: 724.934.2900 FAX: 724.934.2999

### USBM Safe Blasting Levels



### Velocity Waveform

SN: 5148 Event: 18



**Velocity Waveform Graph Scale**  
**Time Scale:** 0.100 s  
**Seismic Scale:** +/- 0.160 in/s  
**Sound Scale:** +/- 0.0023 PSI

# Seismic Analysis

## USBM/Velocity Waveform Report

**Serial No:** 5148 v3.67  
**Date:** 09/22/2022 14:51:20  
**Event No:** 20  
**Record Time:** 5.0 s  
**Client:** City of Miramar  
**Operation:** White Rock Quarries  
**Location:** 5276 SW 152 Ave  
**Distance:**  
**Operator:**  
**Comment:**  
**Seismic Trigger:** 0.050 in/s

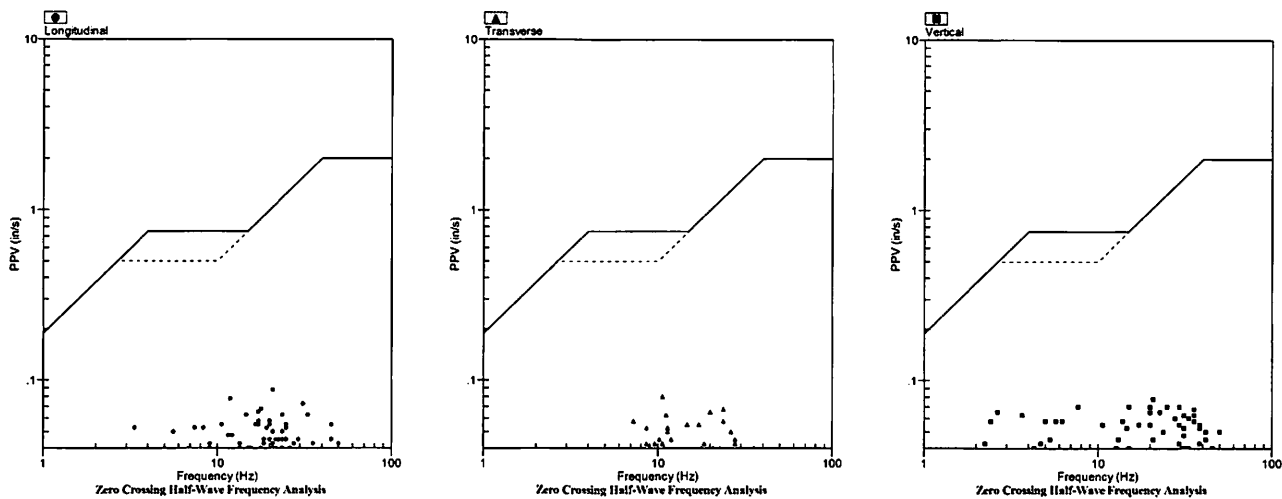
### Summary Data

	L	T	V
<b>PPV (in/s)</b>	0.088	0.080	0.078
<b>FREQ (Hz)</b>	20.8	10.6	20.8
<b>PD (.001")</b>	1.72	1.42	3.41
<b>PPA (g)</b>	0.046	0.033	0.052
<b>Peak Vector Sum:</b>	0.095 in/s		
<b>Peak Air Pressure:</b>	95 db		
	0.00032 PSI @ 8.1 Hz		

### Additional Info:

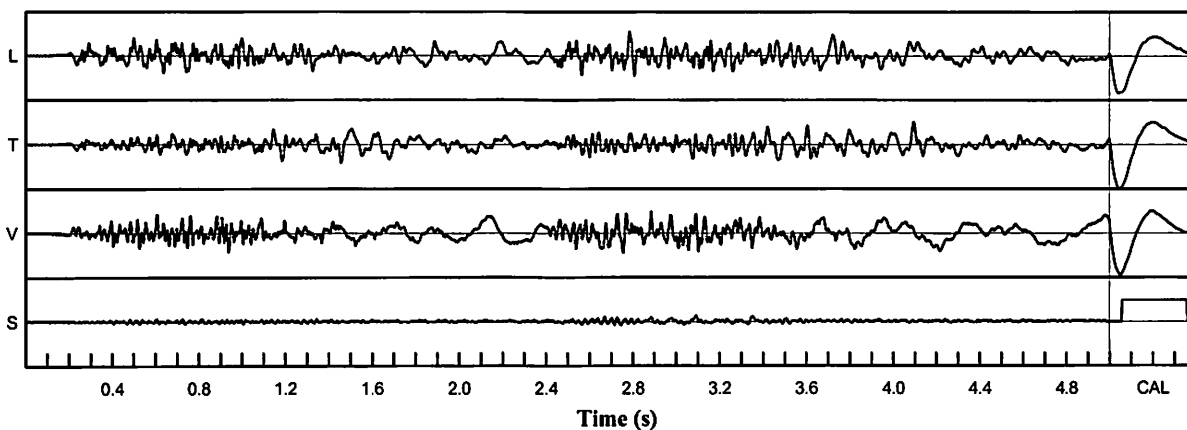
**Shaketable Calibrated:** 06/30/2020  
**By:** GeoSonics Inc.  
 359 Northgate Drive  
 Warrendale, PA 15086 U.S.A.  
 TEL: 724.934.2900 FAX: 724.934.2999

### USBM Safe Blasting Levels



### Velocity Waveform

SN: 5148 Event: 20



### Velocity Waveform Graph Scale

**Time Scale:** 0.100 s  
**Seismic Scale:** +/- 0.160 in/s  
**Sound Scale:** +/- 0.0023 PSI



# Seismic Analysis

## USBM/Velocity Waveform Report

**Serial No:** 5148 v3.67  
**Date:** 09/23/2022 10:18:27  
**Event No:** 21  
**Record Time:** 5.0 s  
**Client:** City of Miramar  
**Operation:** White Rock Quarries  
**Location:** 5276 SW 152 Ave  
**Distance:**  
**Operator:**  
**Comment:**  
**Seismic Trigger:** 0.050 in/s

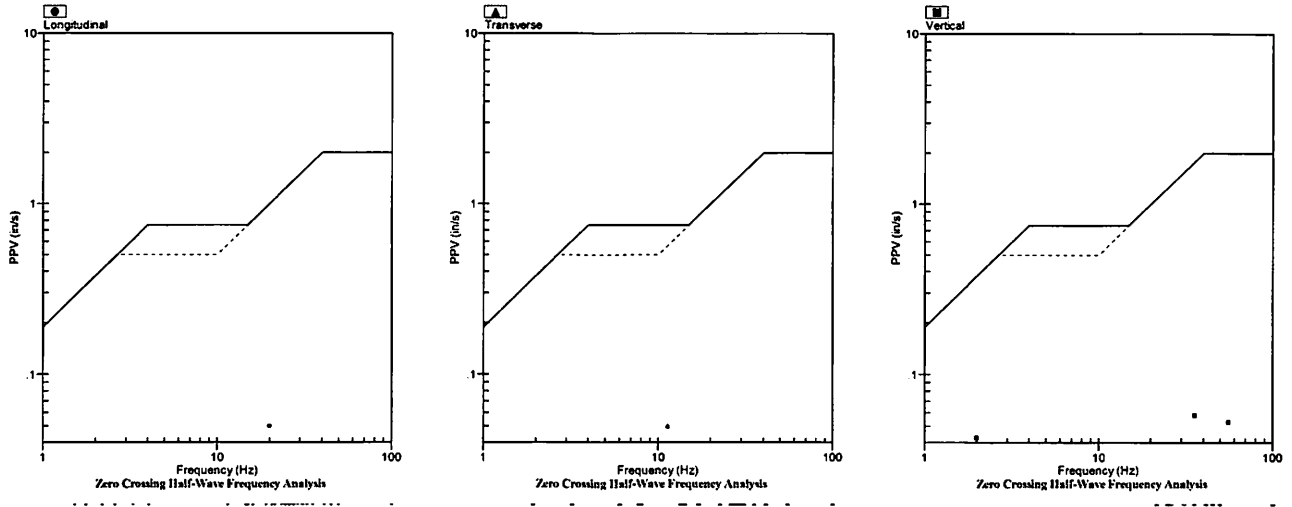
### Summary Data

	L	T	V
<b>PPV (in/s)</b>	0.050	0.050	0.058
<b>FREQ (Hz)</b>	20.0	11.4	27.8
<b>PD (.001")</b>	1.18	1.16	3.32
<b>PPA (g)</b>	0.033	0.020	0.039
<b>Peak Vector Sum:</b>	0.065 in/s		
<b>Peak Air Pressure:</b>	87 db		
	0.00014 PSI @ 1.0 Hz		

### Additional Info:

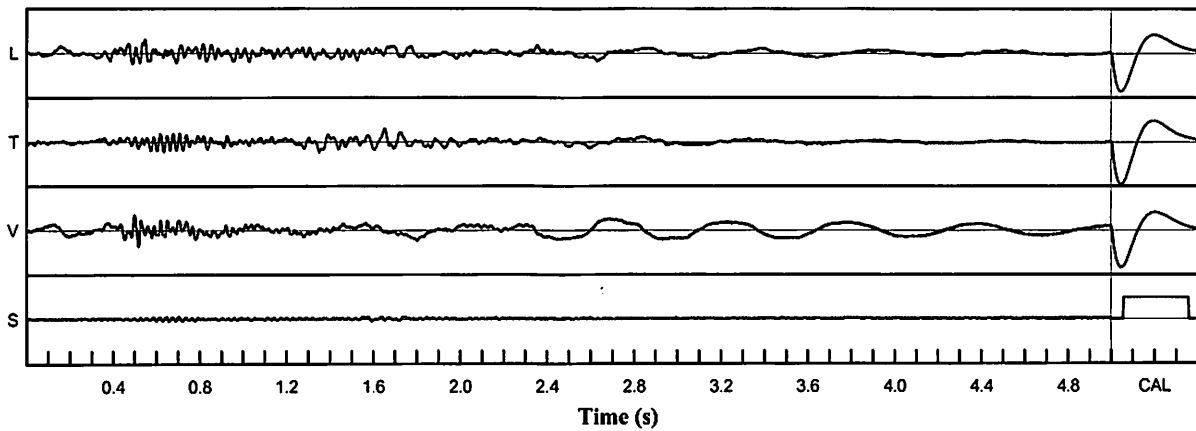
**Shaketable Calibrated:** 06/30/2020  
**By:** GeoSonics Inc.  
 359 Northgate Drive  
 Warrendale, PA 15086 U.S.A.  
 TEL: 724.934.2900 FAX: 724.934.2999

### USBM Safe Blasting Levels



### Velocity Waveform

SN: 5148 Event: 21



### Velocity Waveform Graph Scale

**Time Scale:** 0.100 s  
**Seismic Scale:** +/- 0.160 in/s  
**Sound Scale:** +/- 0.0023 PSI

# Seismic Analysis

## USBM/Velocity Waveform Report

**Serial No:** 5149 v3.67  
**Date:** 09/29/2022 14:17:32  
**Event No:** 8  
**Record Time:** 5.0 s  
**Client:** City of Miramar  
**Operation:** White Rock  
**Location:** 5276 SW 152 Ave  
**Distance:**  
**Operator:**  
**Comment:**  
**Seismic Trigger:** 0.050 in/s

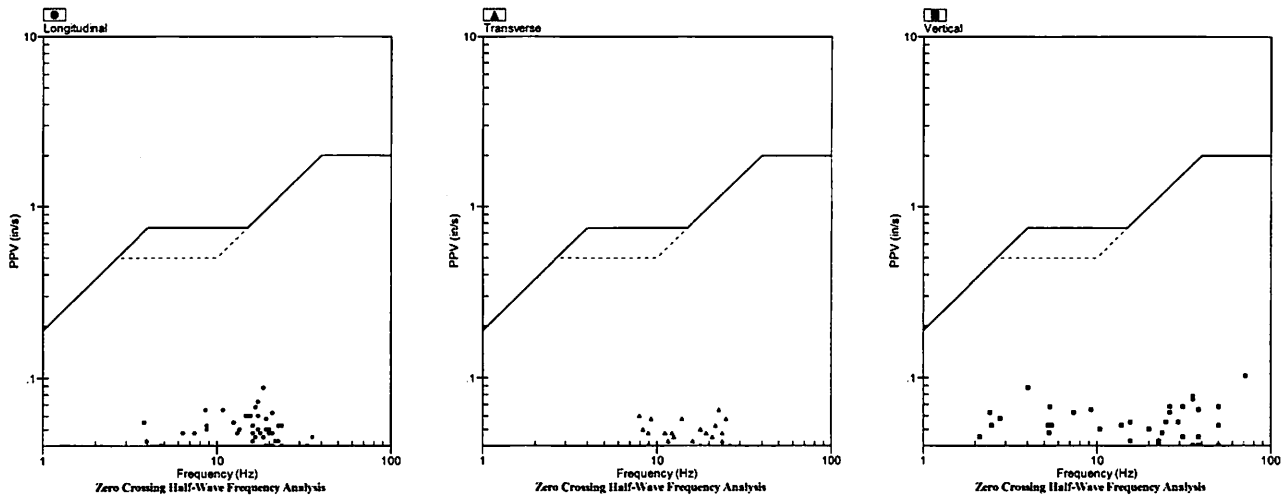
### Summary Data

	L	T	V
PPV (in/s)	0.088	0.065	0.103
FREQ (Hz)	18.5	22.7	38.5
PD (.001")	2.05	1.26	3.62
PPA (g)	0.039	0.033	0.065
Peak Vector Sum:	0.108 in/s		
Peak Air Pressure:	97 db		
	0.00025 PSI @ 3.2 Hz		

### Additional Info:

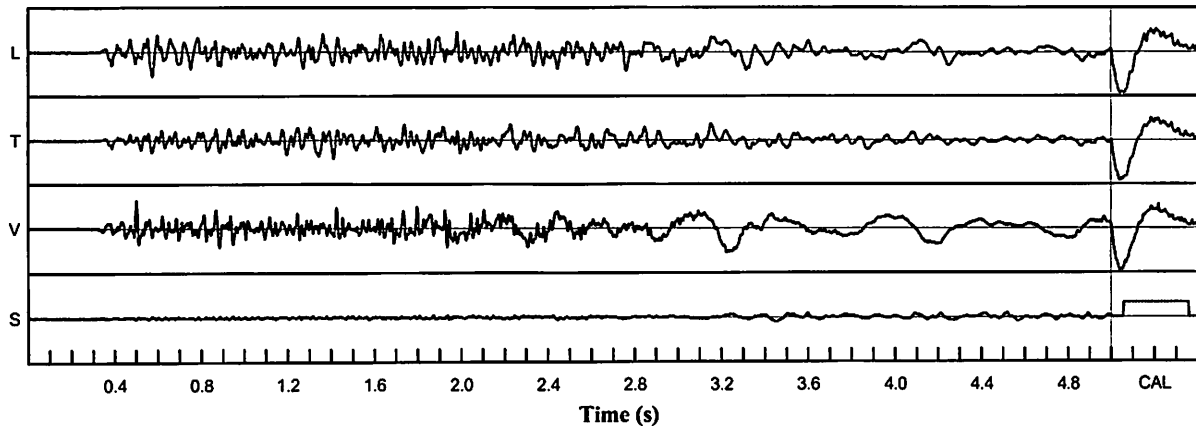
**Shaketable Calibrated:** 03/12/2021  
**By:** GeoSonics Inc.  
 359 Northgate Drive  
 Warrendale, PA 15086 U.S.A.  
 TEL: 724.934.2900 FAX: 724.934.2999

### USBM Safe Blasting Levels



### Velocity Waveform

SN: 5149 Event: 8



### Velocity Waveform Graph Scale

**Time Scale:** 0.100 s  
**Seismic Scale:** +/- 0.160 in/s  
**Sound Scale:** +/- 0.0023 PSI

# Seismic Analysis

## USBM/Velocity Waveform Report

**Serial No:** 5149 v3.67  
**Date:** 10/05/2022 14:05:29  
**Event No:** 9  
**Record Time:** 5.0 s  
**Client:** City of Miramar  
**Operation:** White Rock  
**Location:** 5276 SW 152 Ave  
**Distance:**  
**Operator:**  
**Comment:**  
**Seismic Trigger:** 0.050 in/s

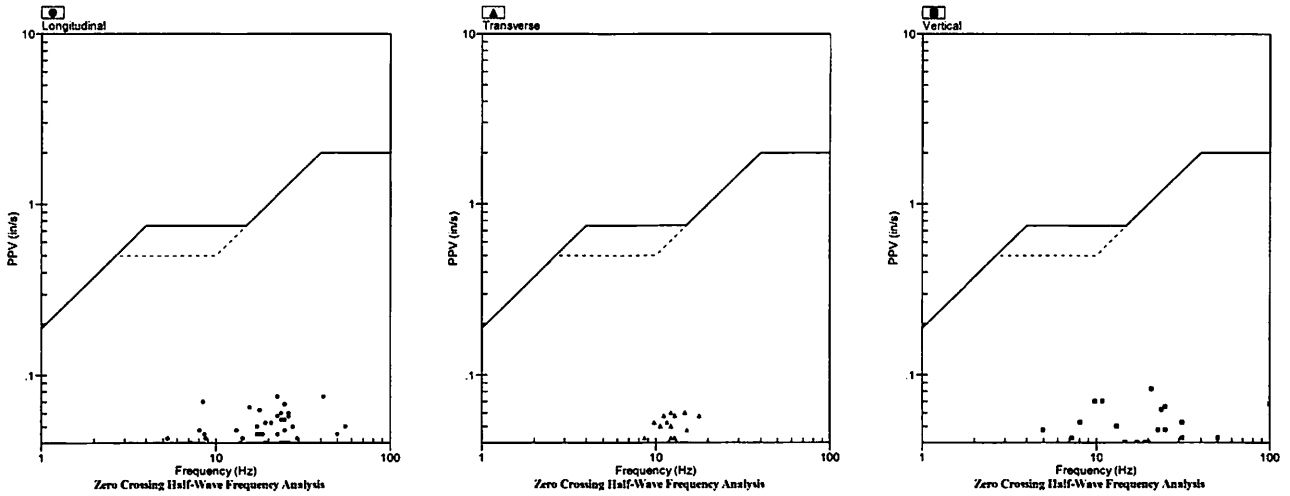
### Summary Data

	L	T	V
<b>PPV (in/s)</b>	0.075	0.060	0.083
<b>FREQ (Hz)</b>	23.8	12.2	20.8
<b>PD (.001")</b>	1.50	0.97	1.86
<b>PPA (g)</b>	0.059	0.026	0.046
<b>Peak Vector Sum:</b>	0.085 in/s		
<b>Peak Air Pressure:</b>	86 db		
	0.00012 PSI @ 41.7 Hz		

### Additional Info:

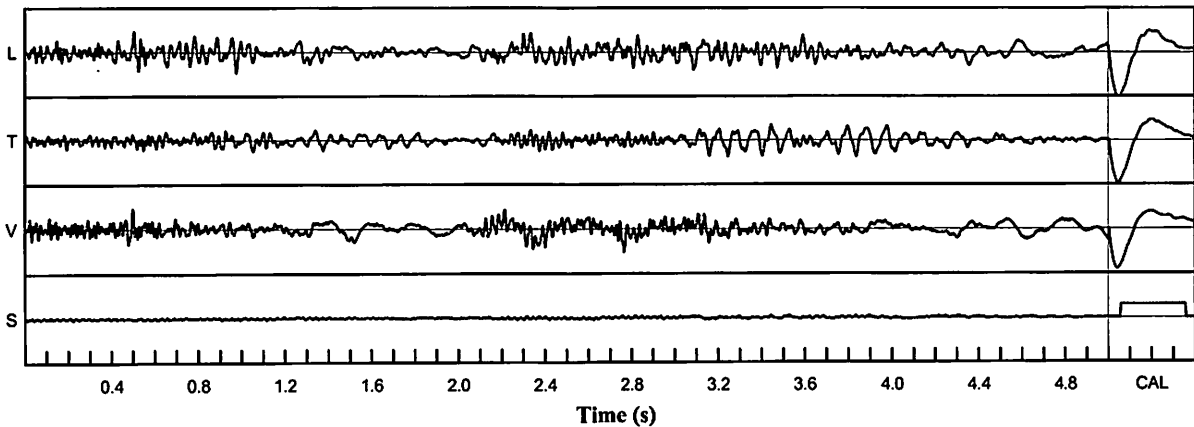
**Shaketable Calibrated:** 03/12/2021  
**By:** GeoSonics Inc.  
 359 Northgate Drive  
 Warrendale, PA 15086 U.S.A.  
 TEL: 724.934.2900 FAX: 724.934.2999

### USBM Safe Blasting Levels



### Velocity Waveform

SN: 5149 Event: 9



### Velocity Waveform Graph Scale

**Time Scale:** 0.100 s  
**Seismic Scale:** +/- 0.160 in/s  
**Sound Scale:** +/- 0.0023 PSI

# Seismic Analysis

## USBM/Velocity Waveform Report

**Serial No:** 5149 v3.67  
**Date:** 10/06/2022 13:02:45  
**Event No:** 10  
**Record Time:** 5.0 s  
**Client:** City of Miramar  
**Operation:** White Rock  
**Location:** 5276 SW 152 Ave  
**Distance:**  
**Operator:**  
**Comment:**  
**Seismic Trigger:** 0.050 in/s

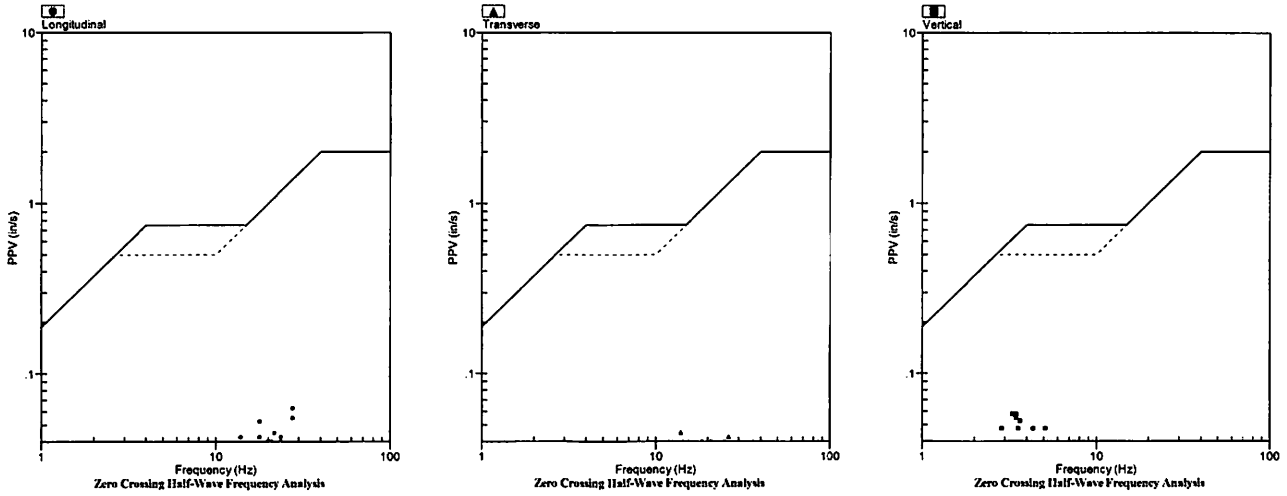
### Summary Data

	L	T	V
<b>PPV (in/s)</b>	0.065	0.045	0.058
<b>FREQ (Hz)</b>	17.2	13.9	3.5
<b>PD (.001")</b>	1.25	0.92	2.42
<b>PPA (g)</b>	0.033	0.026	0.026
<b>Peak Vector Sum:</b>	0.073 in/s		
<b>Peak Air Pressure:</b>	81 db		
	0.00007 PSI @ 250.0 Hz		

### Additional Info:

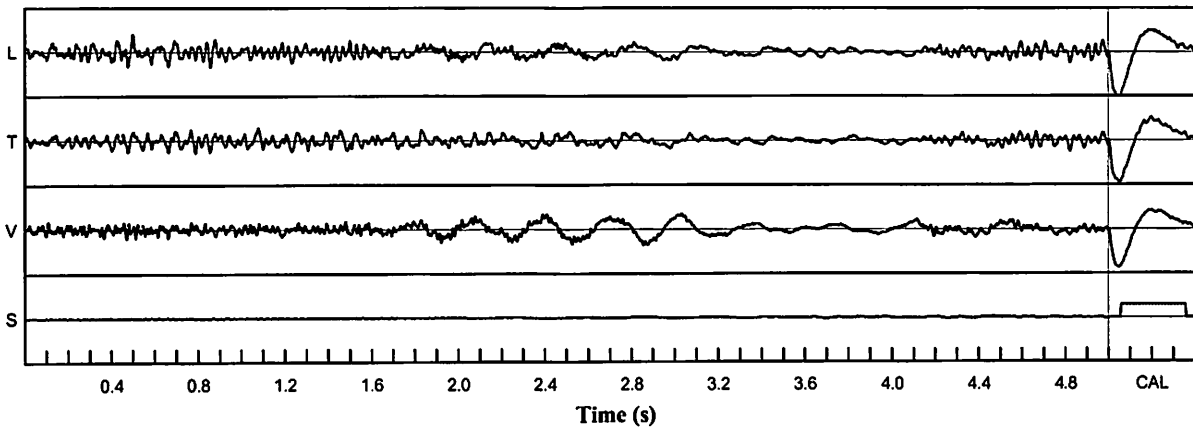
**Shaketable Calibrated:** 03/12/2021  
**By:** GeoSonics Inc.  
 359 Northgate Drive  
 Warrendale, PA 15086 U.S.A.  
 TEL: 724.934.2900 FAX: 724.934.2999

### USBM Safe Blasting Levels



### Velocity Waveform

SN: 5149 Event: 10



### Velocity Waveform Graph Scale

**Time Scale:** 0.100 s  
**Seismic Scale:** +/- 0.160 in/s  
**Sound Scale:** +/- 0.0023 PSI

# Seismic Analysis

## USBM/Velocity Waveform Report

**Serial No:** 5149 v3.67  
**Date:** 10/12/2022 16:19:03  
**Event No:** 11  
**Record Time:** 5.0 s  
**Client:** City of Miramar  
**Operation:** White Rock  
**Location:** 5276 SW 152 Ave  
**Distance:**  
**Operator:**  
**Comment:**  
**Seismic Trigger:** 0.050 in/s

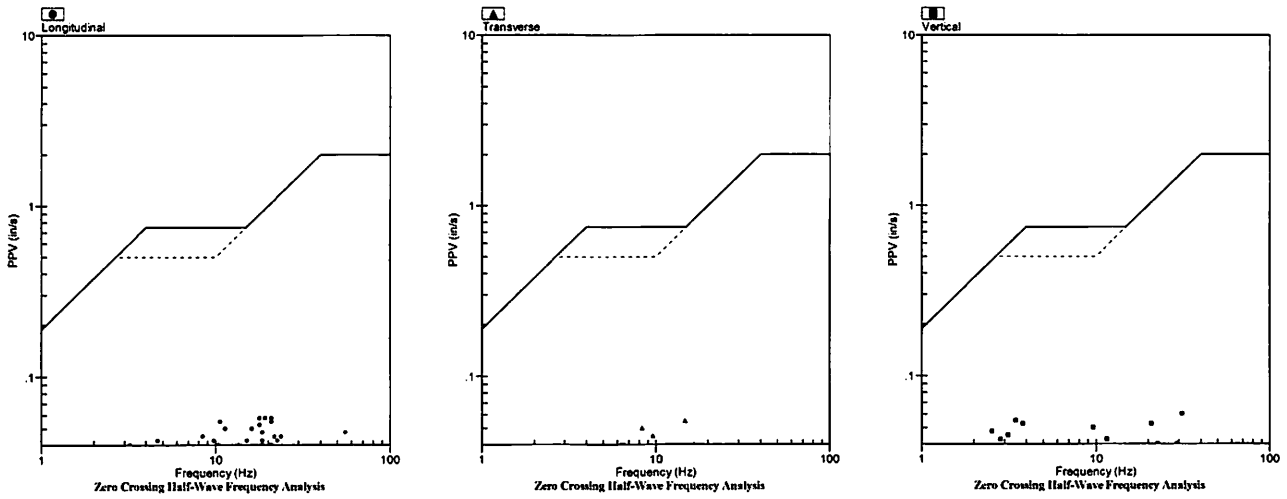
### Summary Data

	L	T	V
<b>PPV (in/s)</b>	0.058	0.055	0.060
<b>FREQ (Hz)</b>	20.8	14.7	31.3
<b>PD (.001")</b>	1.66	0.94	2.78
<b>PPA (g)</b>	0.026	0.026	0.046
<b>Peak Vector Sum:</b>	0.075 in/s		
<b>Peak Air Pressure:</b>	106 db		
	0.00066 PSI @ 7.1 Hz		

### Additional Info:

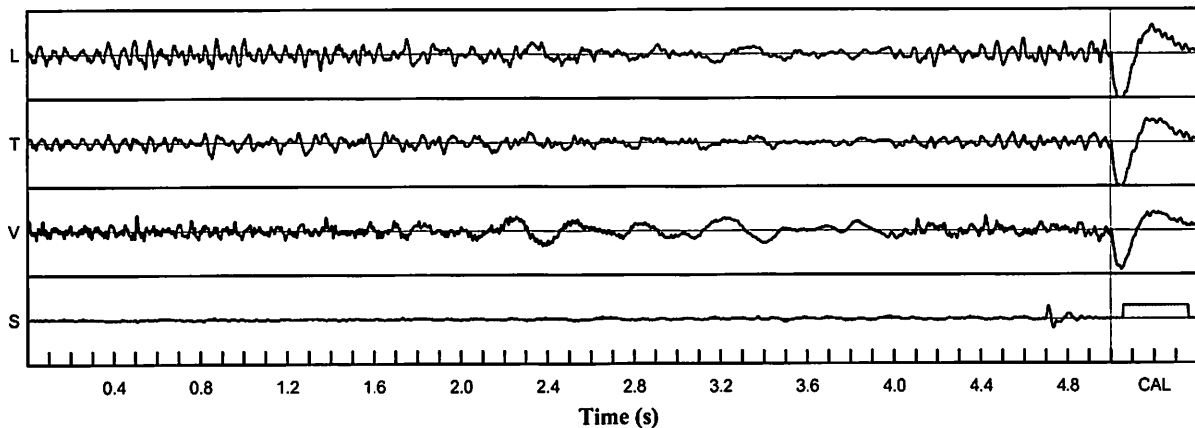
**Shaketable Calibrated:** 03/12/2021  
**By:** GeoSonics Inc.  
 359 Northgate Drive  
 Warrendale, PA 15086 U.S.A.  
 TEL: 724.934.2900 FAX: 724.934.2999

### USBM Safe Blasting Levels



### Velocity Waveform

SN: 5149 Event: 11



### Velocity Waveform Graph Scale

**Time Scale:** 0.100 s  
**Seismic Scale:** +/- 0.160 in/s  
**Sound Scale:** +/- 0.0023 PSI

# Seismic Analysis

## USBM/Velocity Waveform Report

**Serial No:** 5149 v3.67  
**Date:** 10/13/2022 16:24:41  
**Event No:** 12  
**Record Time:** 5.0 s  
**Client:** City of Miramar  
**Operation:** White Rock  
**Location:** 5276 SW 152 Ave  
**Distance:**  
**Operator:**  
**Comment:**  
**Seismic Trigger:** 0.050 in/s

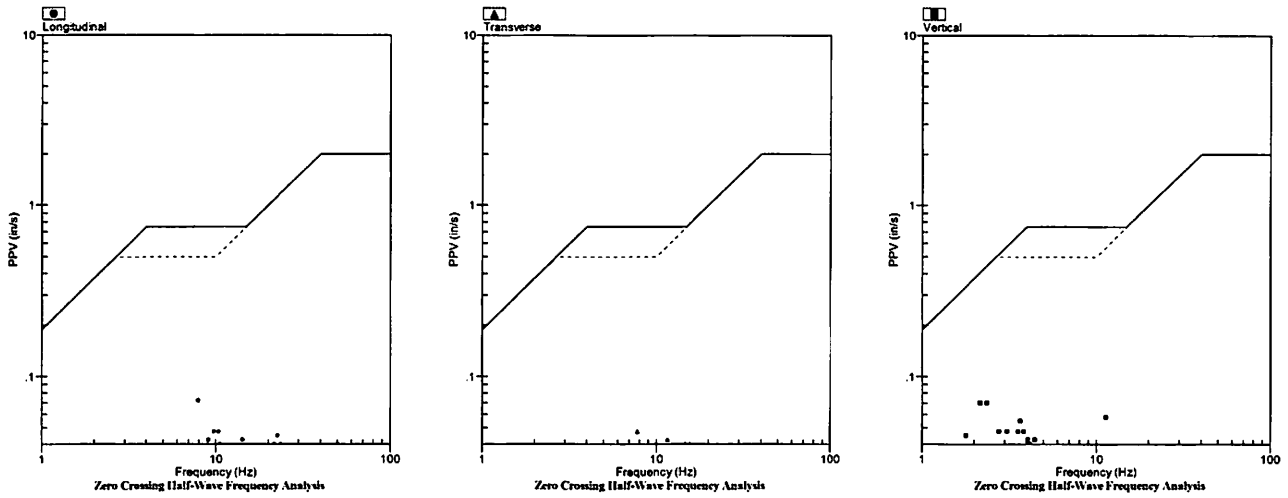
### Summary Data

	L	T	V
<b>PPV (in/s)</b>	0.073	0.048	0.070
<b>FREQ (Hz)</b>	7.9	7.8	2.4
<b>PD (.001")</b>	1.59	1.40	4.09
<b>PPA (g)</b>	0.020	0.020	0.026
<b>Peak Vector Sum:</b>	0.085 in/s		
<b>Peak Air Pressure:</b>	110 db		
	0.00091 PSI @ 4.6 Hz		

### Additional Info:

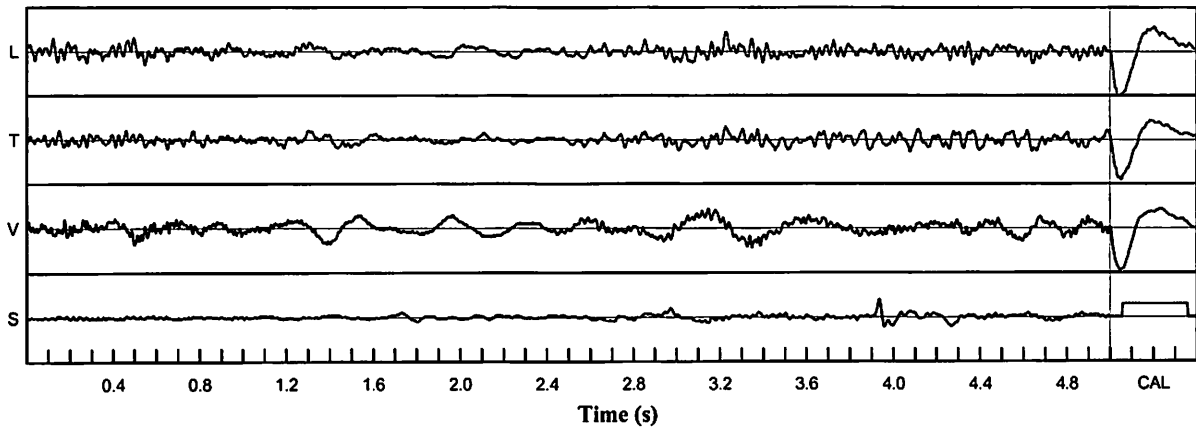
**Shaketable Calibrated:** 03/12/2021  
**By:** GeoSonics Inc.  
 359 Northgate Drive  
 Warrendale, PA 15086 U.S.A.  
 TEL: 724.934.2900 FAX: 724.934.2999

### USBM Safe Blasting Levels



### Velocity Waveform

SN: 5149 Event: 12



### Velocity Waveform Graph Scale

**Time Scale:** 0.100 s  
**Seismic Scale:** +/- 0.160 in/s  
**Sound Scale:** +/- 0.0023 PSI

# Seismic Analysis

## USBM/Velocity Waveform Report

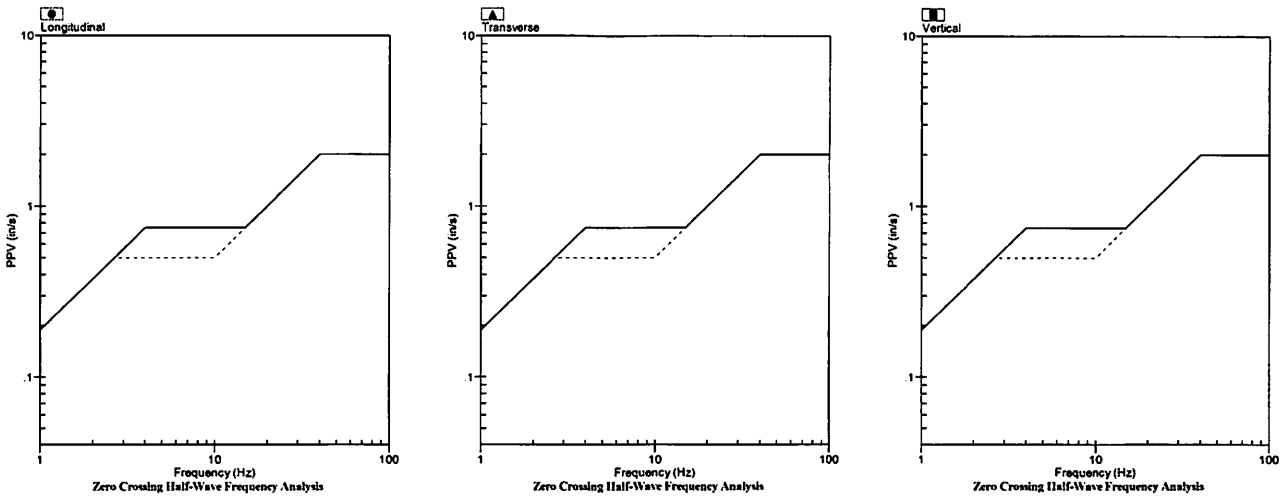
**Serial No:** 5148 v3.67  
**Date:** 04/29/2022 10:08:11  
**Event No:** 2  
**Record Time:** 5.0 s  
**Client:** City of Miramar  
**Operation:** White Rock Quarries  
**Location:** 5276 SW 152 Ave  
**Distance:**  
**Operator:**  
**Comment:**  
**Seismic Trigger:** 0.050 in/s

Summary Data			
	L	T	V
PPV (in/s)	0.083	0.060	0.013
FREQ (Hz)	50.0	7.5	5.8
PD (.001")	0.43	0.28	0.09
PPA (g)	0.091	0.052	0.013
Peak Vector Sum:	0.103 in/s		
Peak Air Pressure:	83 db		
	0.00007 PSI @ 1.0 Hz		

**Additional Info:**

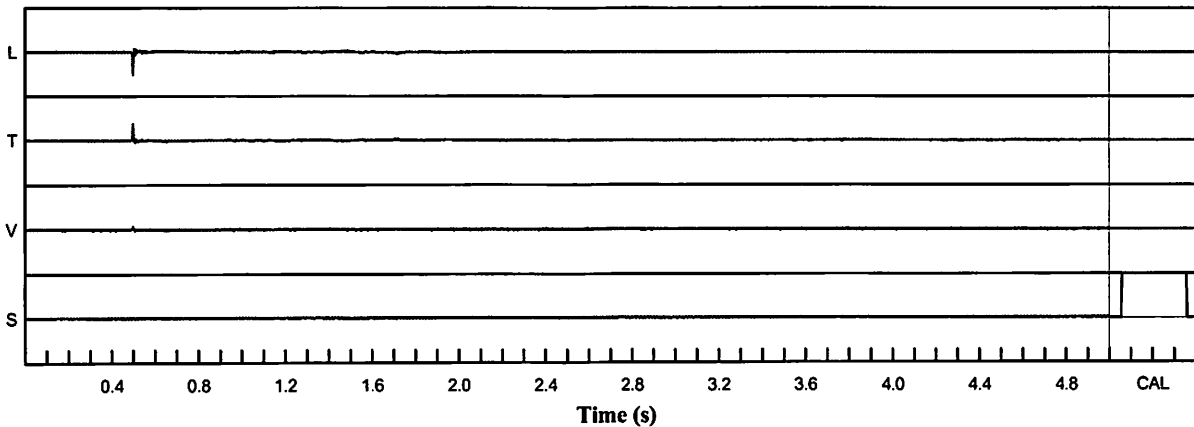
**Shaketable Calibrated:** 06/30/2020  
**By:** GeoSonics Inc.  
 359 Northgate Drive  
 Warrendale, PA 15086 U.S.A.  
 TEL: 724.934.2900 FAX: 724.934.2999

### USBM Safe Blasting Levels



### Velocity Waveform

SN: 5148 Event: 2



**Velocity Waveform Graph Scale**

**Time Scale:** 0.100 s  
**Seismic Scale:** +/- 0.160 in/s  
**Sound Scale:** +/- 0.0023 PSI

# Seismic Analysis

## USBM/Velocity Waveform Report

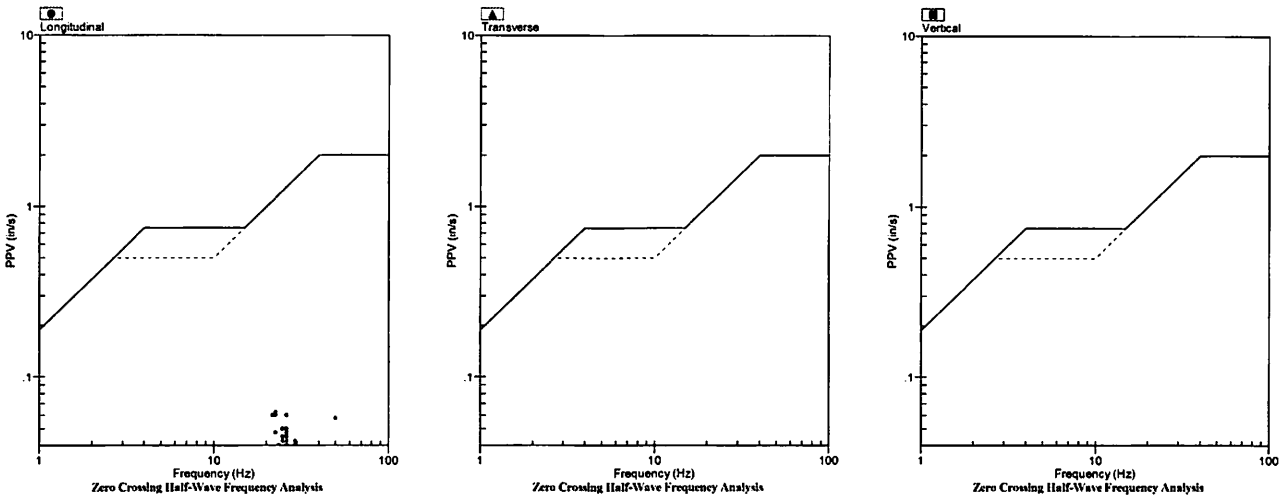
**Serial No:** 5148 v3.67  
**Date:** 05/06/2022 10:19:55  
**Event No:** 3  
**Record Time:** 5.0 s  
**Client:** City of Miramar  
**Operation:** White Rock Quarries  
**Location:** 5276 SW 152 Ave  
**Distance:**  
**Operator:**  
**Comment:**  
**Seismic Trigger:** 0.050 in/s

Summary Data			
	L	T	V
PPV (in/s)	0.063	0.020	0.030
FREQ (Hz)	22.7	12.5	22.7
PD (.001")	0.60	0.54	0.32
PPA (g)	0.033	0.013	0.020
Peak Vector Sum:	0.065 in/s		
Peak Air Pressure:	90 db		
	0.00021 PSI @ 17.9 Hz		

**Additional Info:**

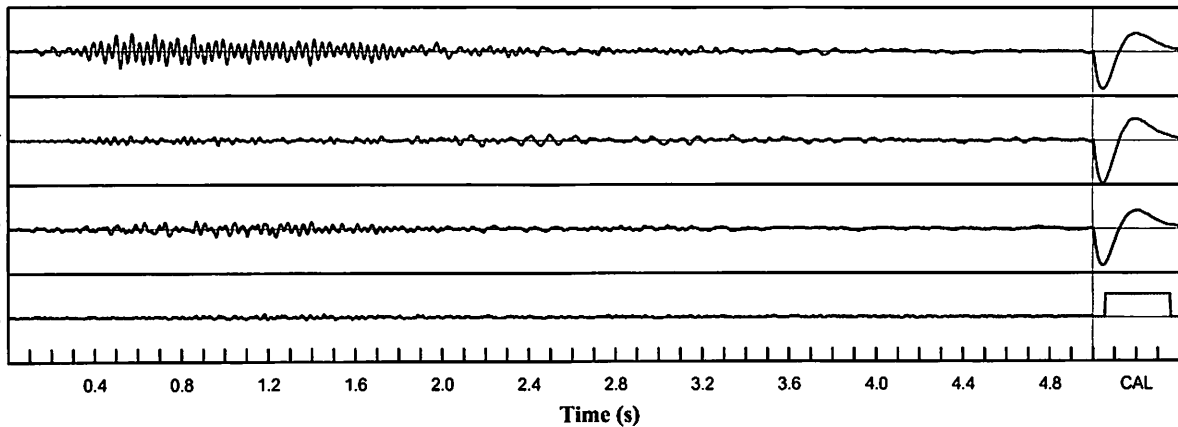
**Shaketable Calibrated:** 06/30/2020  
**By:** GeoSonics Inc.  
 359 Northgate Drive  
 Warrendale, PA 15086 U.S.A.  
 TEL: 724.934.2900 FAX: 724.934.2999

### USBM Safe Blasting Levels



### Velocity Waveform

SN: 5148 Event: 3



**Velocity Waveform Graph Scale**  
**Time Scale:** 0.100 s  
**Seismic Scale:** +/- 0.160 in/s  
**Sound Scale:** +/- 0.0023 PSI



# Seismic Analysis

## USBM/Velocity Waveform Report

**Serial No:** 5148 v3.67  
**Date:** 05/11/2022 13:03:12  
**Event No:** 4  
**Record Time:** 5.0 s  
**Client:** City of Miramar  
**Operation:** White Rock Quarries  
**Location:** 5276 SW 152 Ave  
**Distance:**  
**Operator:**  
**Comment:**  
**Seismic Trigger:** 0.050 in/s

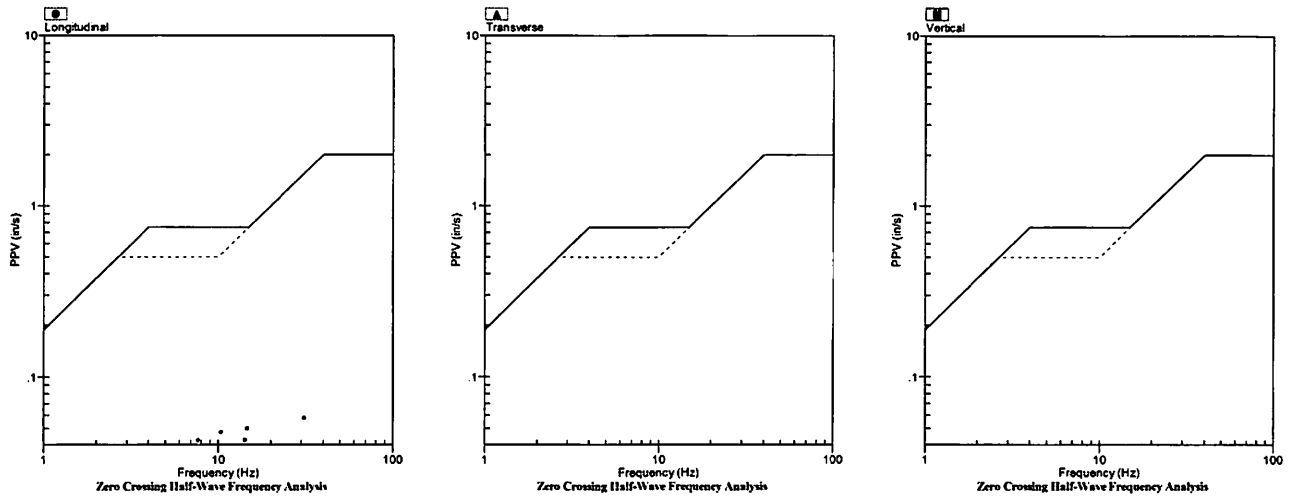
### Summary Data

	L	T	V
PPV (in/s)	0.058	0.033	0.040
FREQ (Hz)	14.3	17.9	7.4
PD (.001")	1.26	0.90	1.37
PPA (g)	0.020	0.020	0.020
Peak Vector Sum:	0.060 in/s		
Peak Air Pressure:	85 db		
	0.00011 PSI @ 1.0 Hz		

### Additional Info:

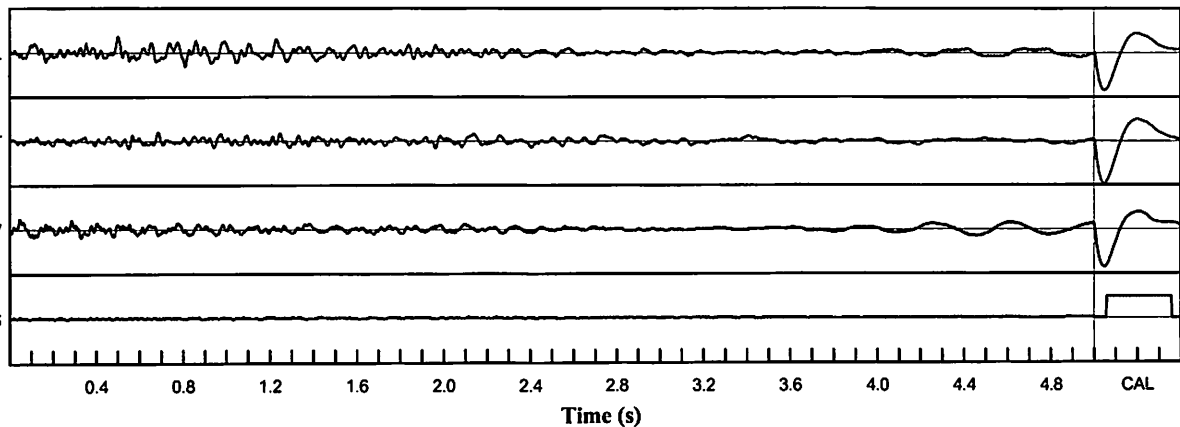
**Shaketable Calibrated:** 06/30/2020  
**By:** GeoSonics Inc.  
 359 Northgate Drive  
 Warrendale, PA 15086 U.S.A.  
 TEL: 724.934.2900 FAX: 724.934.2999

### USBM Safe Blasting Levels



### Velocity Waveform

SN: 5148 Event: 4



### Velocity Waveform Graph Scale

**Time Scale:** 0.100 s  
**Seismic Scale:** +/- 0.160 in/s  
**Sound Scale:** +/- 0.0023 PSI

# Seismic Analysis

## USBM/Velocity Waveform Report

**Serial No:** 5148 v3.67  
**Date:** 06/24/2022 14:03:53  
**Event No:** 5  
**Record Time:** 5.0 s  
**Client:** City of Miramar  
**Operation:** White Rock Quarries  
**Location:** 5276 SW 152 Ave  
**Distance:**  
**Operator:**  
**Comment:**  
**Seismic Trigger:** 0.050 in/s

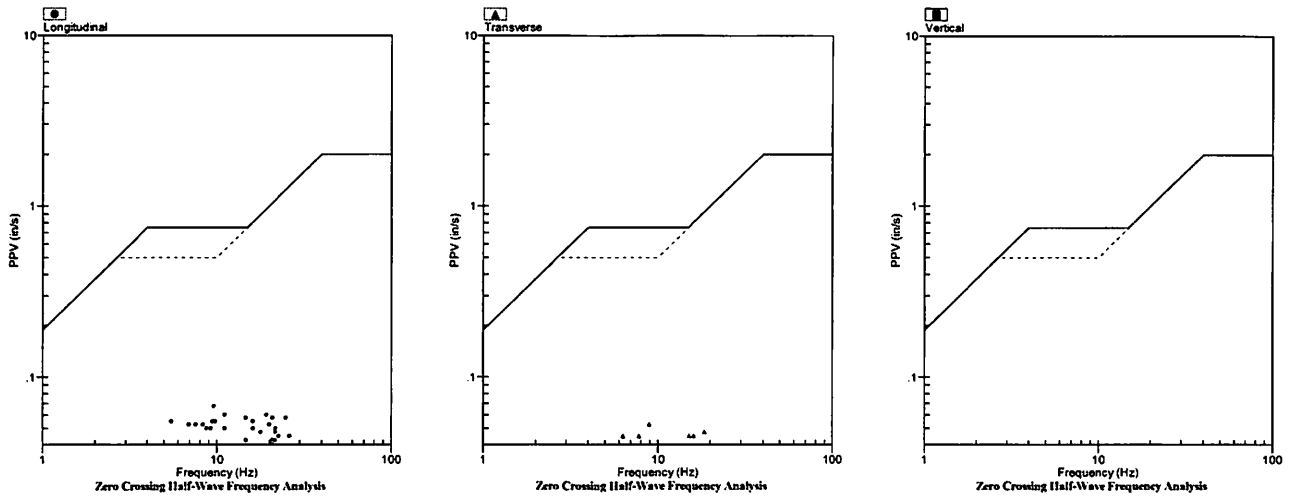
### Summary Data

	L	T	V
<b>PPV (in/s)</b>	0.068	0.053	0.038
<b>FREQ (Hz)</b>	9.6	8.9	9.1
<b>PD (.001")</b>	1.33	1.35	1.42
<b>PPA (g)</b>	0.033	0.026	0.026
<b>Peak Vector Sum:</b>	0.085 in/s		
<b>Peak Air Pressure:</b>	88 db		
	0.00018 PSI @ 4.1 Hz		

### Additional Info:

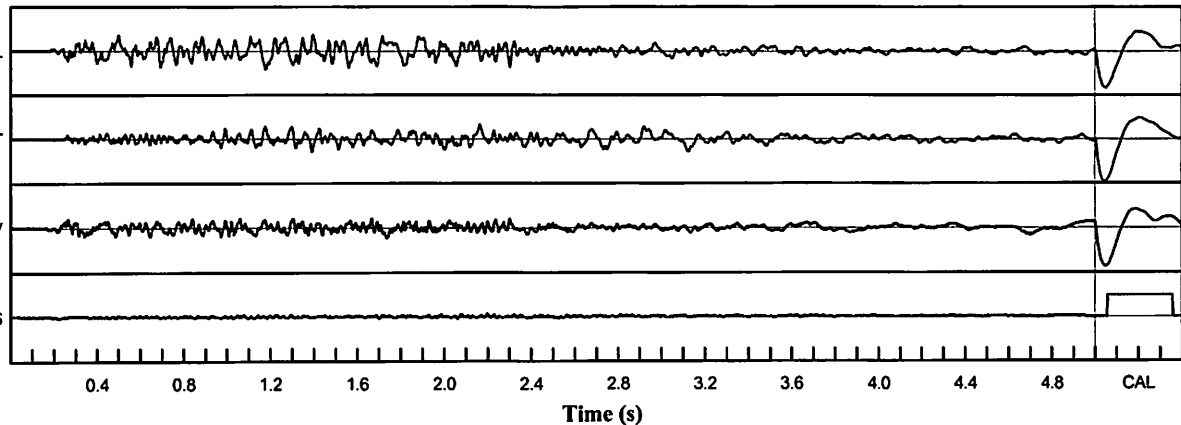
**Shaketable Calibrated:** 06/30/2020  
**By:** GeoSonics Inc.  
 359 Northgate Drive  
 Warrendale, PA 15086 U.S.A.  
 TEL: 724.934.2900 FAX: 724.934.2999

### USBM Safe Blasting Levels



### Velocity Waveform

SN: 5148 Event: 5



### Velocity Waveform Graph Scale

**Time Scale:** 0.100 s  
**Seismic Scale:** +/- 0.160 in/s  
**Sound Scale:** +/- 0.0023 PSI

# Seismic Analysis

## USBM/Velocity Waveform Report

**Serial No:** 5148 v3.67  
**Date:** 06/30/2022 10:47:01  
**Event No:** 8  
**Record Time:** 5.0 s  
**Client:** City of Miramar  
**Operation:** White Rock Quarries  
**Location:** 5276 SW 152 Ave  
**Distance:**  
**Operator:**  
**Comment:**  
**Seismic Trigger:** 0.050 in/s

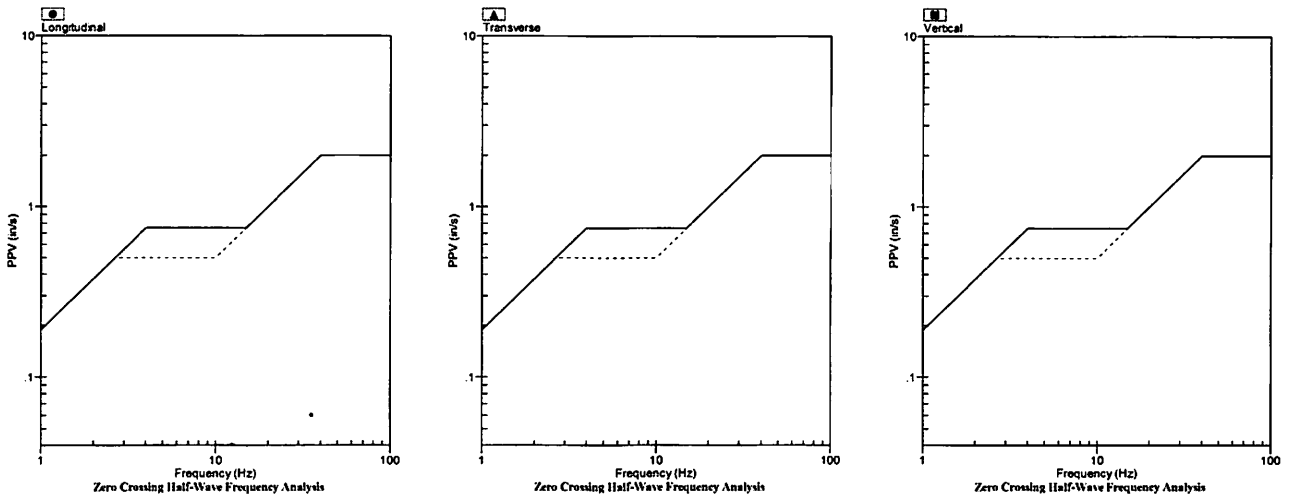
### Summary Data

	L	T	V
PPV (in/s)	0.063	0.028	0.025
FREQ (Hz)	18.5	14.3	29.4
PD (.001")	0.83	1.29	1.21
PPA (g)	0.026	0.020	0.020
Peak Vector Sum:	0.063 in/s		
Peak Air Pressure:	88 db		
	0.00018 PSI @ 1.0 Hz		

### Additional Info:

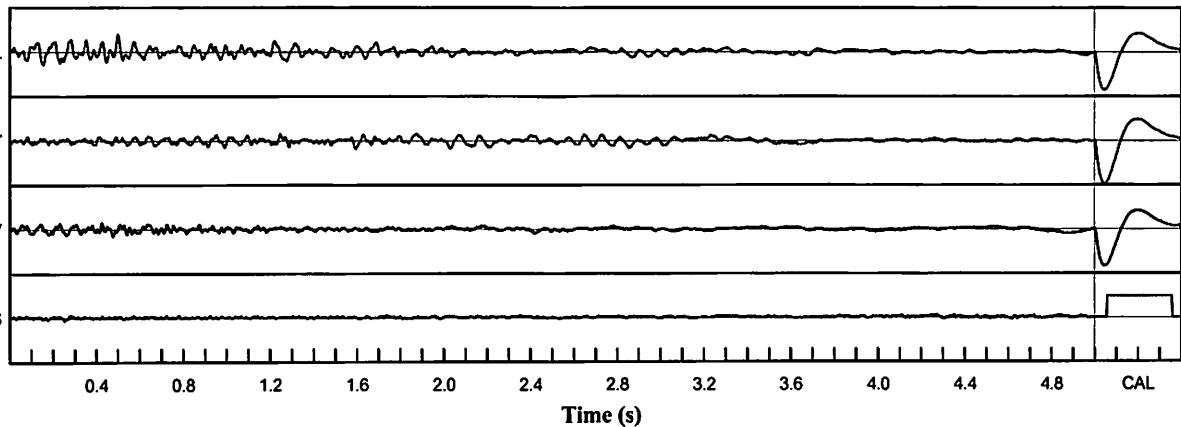
**Shaketable Calibrated:** 06/30/2020  
**By:** GeoSonics Inc.  
 359 Northgate Drive  
 Warrendale, PA 15086 U.S.A.  
 TEL: 724.934.2900 FAX: 724.934.2999

### USBM Safe Blasting Levels



### Velocity Waveform

SN: 5148 Event: 8



### Velocity Waveform Graph Scale

**Time Scale:** 0.100 s  
**Seismic Scale:** +/- 0.160 in/s  
**Sound Scale:** +/- 0.0023 PSI

# Seismic Analysis

## USBM/Velocity Waveform Report

**Serial No:** 5148 v3.67  
**Date:** 07/01/2022 15:28:26  
**Event No:** 9  
**Record Time:** 5.0 s  
**Client:** City of Miramar  
**Operation:** White Rock Quarries  
**Location:** 5276 SW 152 Ave  
**Distance:**  
**Operator:**  
**Comment:**  
**Seismic Trigger:** 0.050 in/s

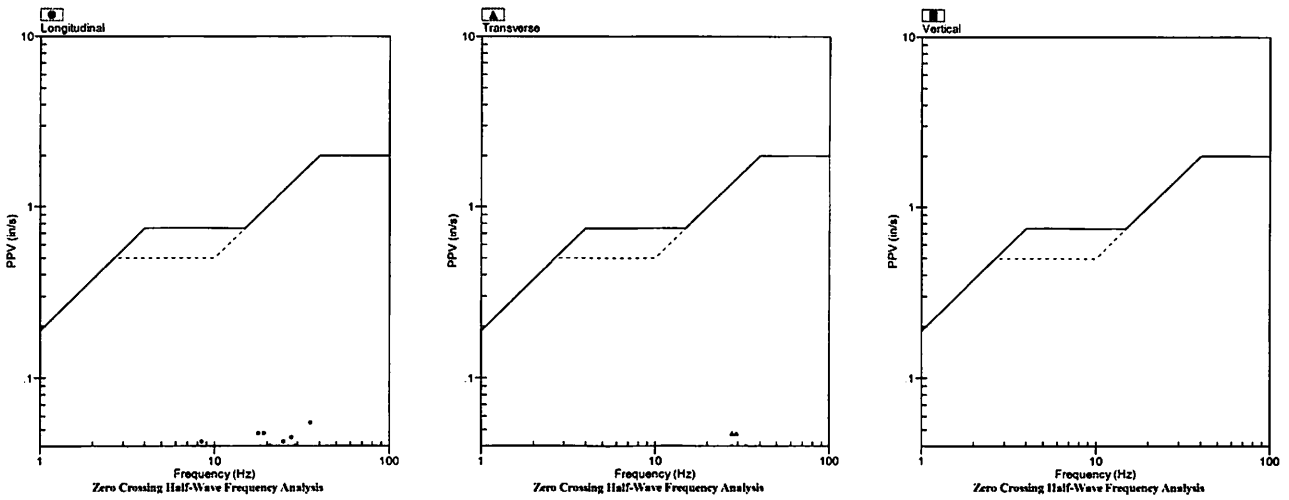
### Summary Data

	L	T	V
PPV (in/s)	0.058	0.048	0.033
FREQ (Hz)	18.5	29.4	27.8
PD (.001")	0.91	0.53	0.43
PPA (g)	0.026	0.026	0.020
Peak Vector Sum:	0.058 in/s		
Peak Air Pressure:	88 db		
	0.00018 PSI @ 33.3 Hz		

### Additional Info:

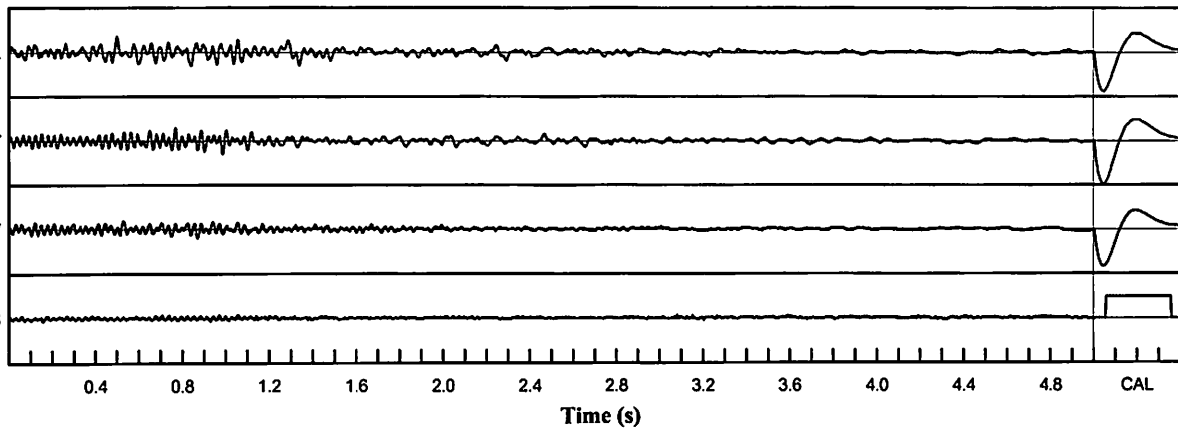
**Shaketable Calibrated:** 06/30/2020  
**By:** GeoSonics Inc.  
 359 Northgate Drive  
 Warrendale, PA 15086 U.S.A.  
 TEL: 724.934.2900 FAX: 724.934.2999

### USBM Safe Blasting Levels



### Velocity Waveform

SN: 5148 Event: 9



### Velocity Waveform Graph Scale

**Time Scale:** 0.100 s  
**Seismic Scale:** +/- 0.160 in/s  
**Sound Scale:** +/- 0.0023 PSI



# GeoSonics Seismic Analysis

## USBM/Velocity Waveform Report

**Serial No:** 5149 v3.67  
**Date:** 11/04/2022 14:17:22  
**Event No:** 13  
**Record Time:** 5.0 s  
**Client:** City of Miramar  
**Operation:** White Rock  
**Location:** 5276 SW 152 Ave  
**Distance:**  
**Operator:**  
**Comment:**  
**Seismic Trigger:** 0.050 in/s

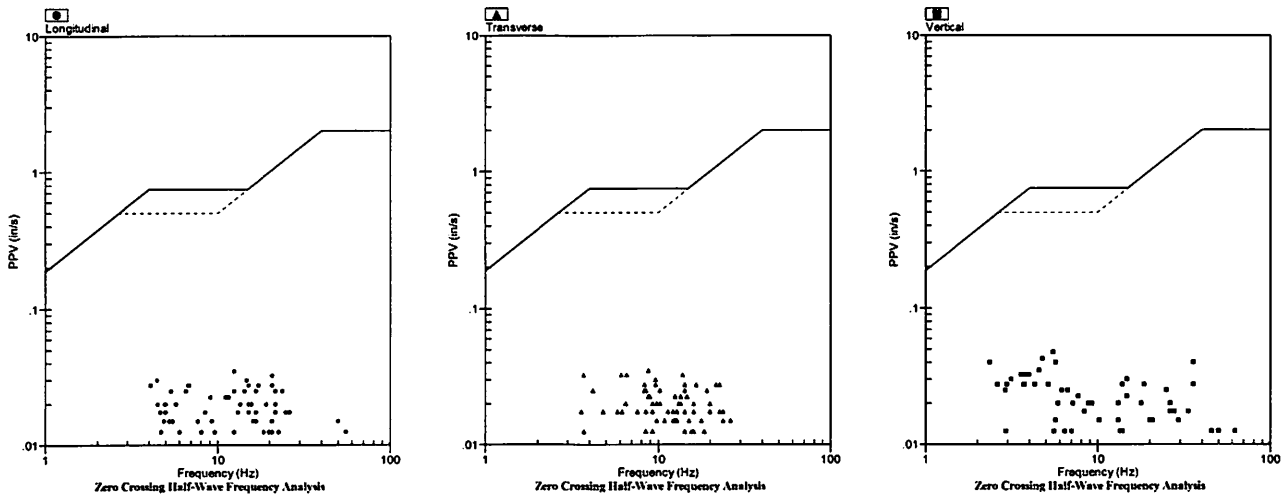
### Summary Data

	L	T	V
PPV (in/s)	0.048	0.040	0.058
FREQ (Hz)	7.8	10.2	4.2
PD (.001")	1.05	1.13	1.84
PPA (g)	0.020	0.020	0.026
Peak Vector Sum:	0.065 in/s		
Peak Air Pressure:	95 db		
	0.00023 PSI @ 3.7 Hz		

### Additional Info:

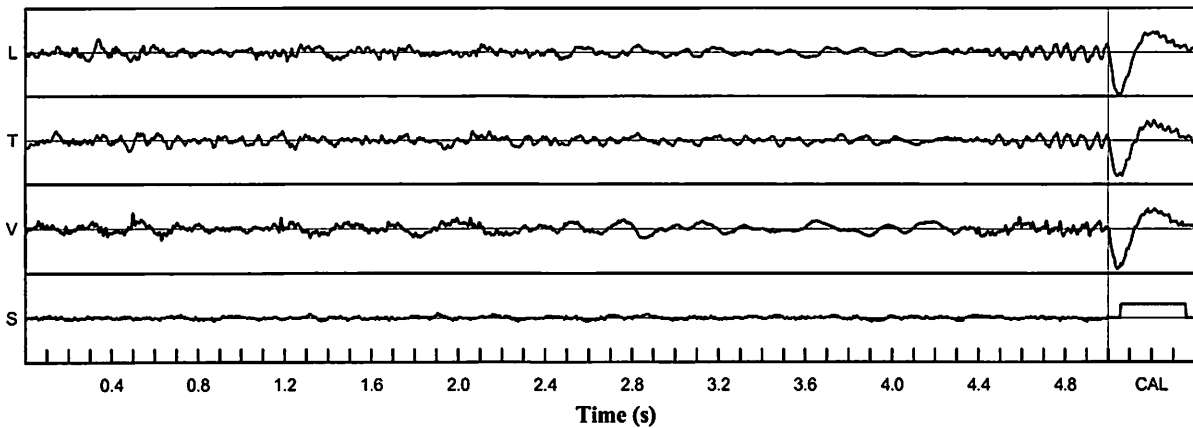
**Shaketable Calibrated:** 03/12/2021  
**By:** GeoSonics Inc.  
 359 Northgate Drive  
 Warrendale, PA 15086 U.S.A.  
 TEL: 724.934.2900 FAX: 724.934.2999

### USBM Safe Blasting Levels



### Velocity Waveform

SN: 5149 Event: 13



### Velocity Waveform Graph Scale

**Time Scale:** 0.100 s  
**Seismic Scale:** +/- 0.160 in/s  
**Sound Scale:** +/- 0.0023 PSI



# GeoSonics Seismic Analysis

## USBM/Velocity Waveform Report

**Serial No:** 5149 v3.67  
**Date:** 11/08/2022 11:48:37  
**Event No:** 15  
**Record Time:** 5.0 s  
**Client:** City of Miramar  
**Operation:** White Rock  
**Location:** 5276 SW 152 Ave  
**Distance:**  
**Operator:**  
**Comment:**  
**Seismic Trigger:** 0.050 in/s

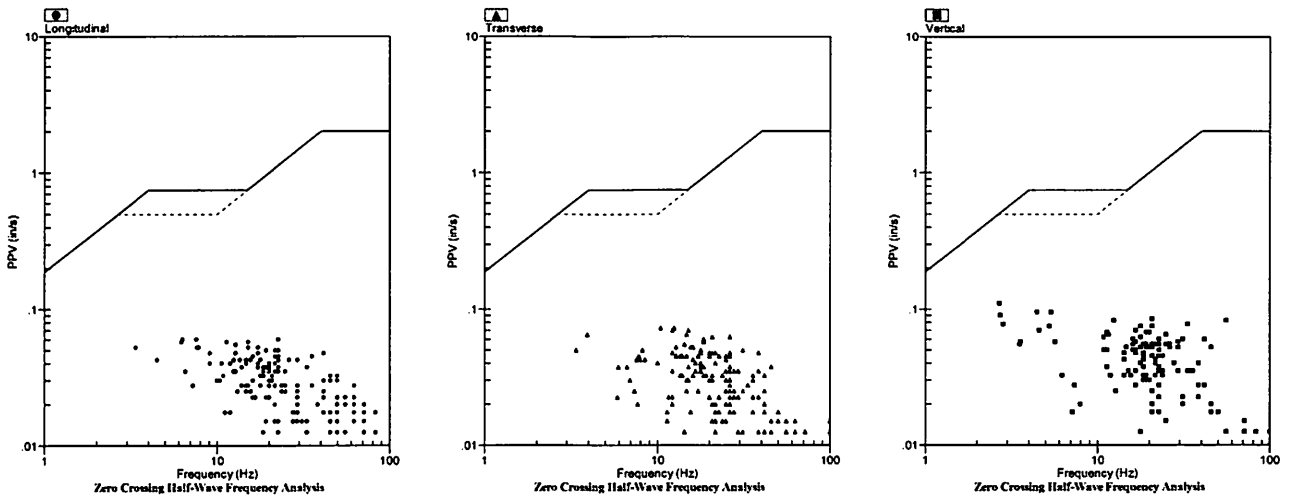
### Summary Data

	L	T	V
PPV (in/s)	0.060	0.073	0.110
FREQ (Hz)	22.7	12.5	2.7
PD (.001")	1.97	1.92	4.54
PPA (g)	0.039	0.039	0.052
Peak Vector Sum:	0.120 in/s		
Peak Air Pressure:	89 db		
	0.00016 PSI @ 3.5 Hz		

### Additional Info:

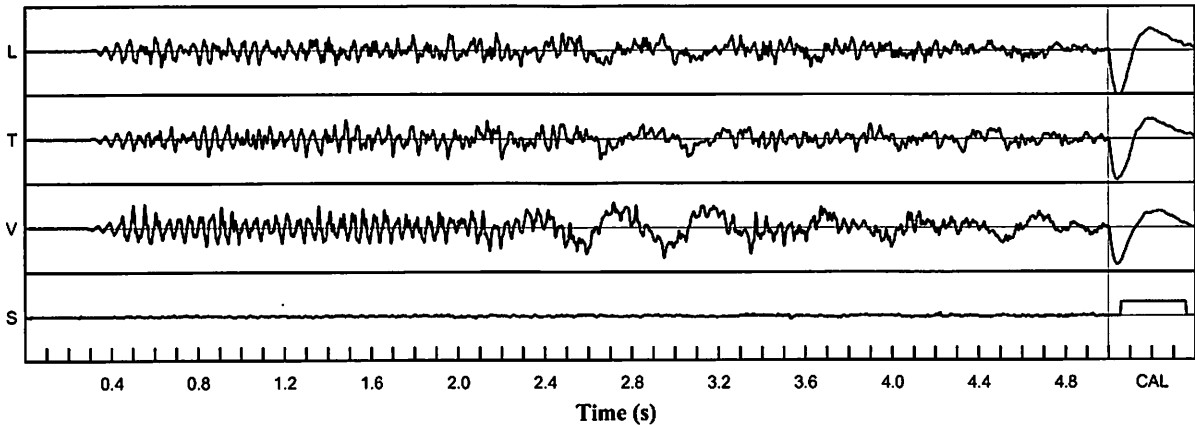
**Shaketable Calibrated:** 03/12/2021  
**By:** GeoSonics Inc.  
 359 Northgate Drive  
 Warrendale, PA 15086 U.S.A.  
 TEL: 724.934.2900 FAX: 724.934.2999

### USBM Safe Blasting Levels



### Velocity Waveform

SN: 5149 Event: 15



### Velocity Waveform Graph Scale

**Time Scale:** 0.100 s  
**Seismic Scale:** +/- 0.160 in/s  
**Sound Scale:** +/- 0.0023 PSI



# GeoSonics Seismic Analysis

## USBM/Velocity Waveform Report

**Serial No:** 5149 v3.67  
**Date:** 11/08/2022 15:48:54  
**Event No:** 16  
**Record Time:** 5.0 s  
**Client:** City of Miramar  
**Operation:** White Rock  
**Location:** 5276 SW 152 Ave  
**Distance:**  
**Operator:**  
**Comment:**  
**Seismic Trigger:** 0.050 in/s

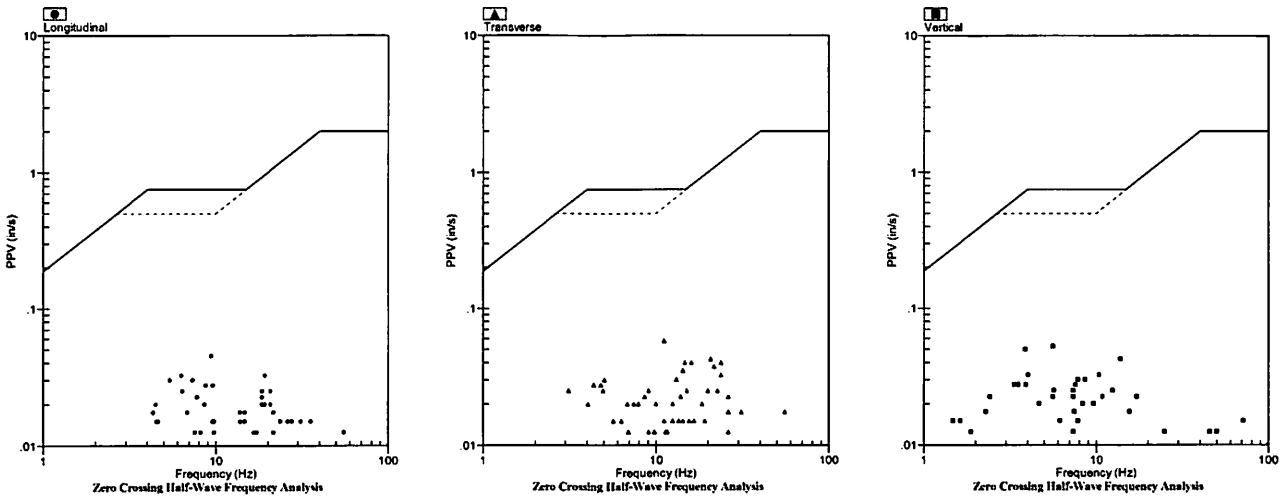
### Summary Data

	L	T	V
PPV (in/s)	0.045	0.058	0.053
FREQ (Hz)	9.4	11.1	3.3
PD (.001")	0.92	1.34	2.24
PPA (g)	0.020	0.020	0.020
Peak Vector Sum:	0.065 in/s		
Peak Air Pressure:	79 db		
	0.00005 PSI @ 1.0 Hz		

### Additional Info:

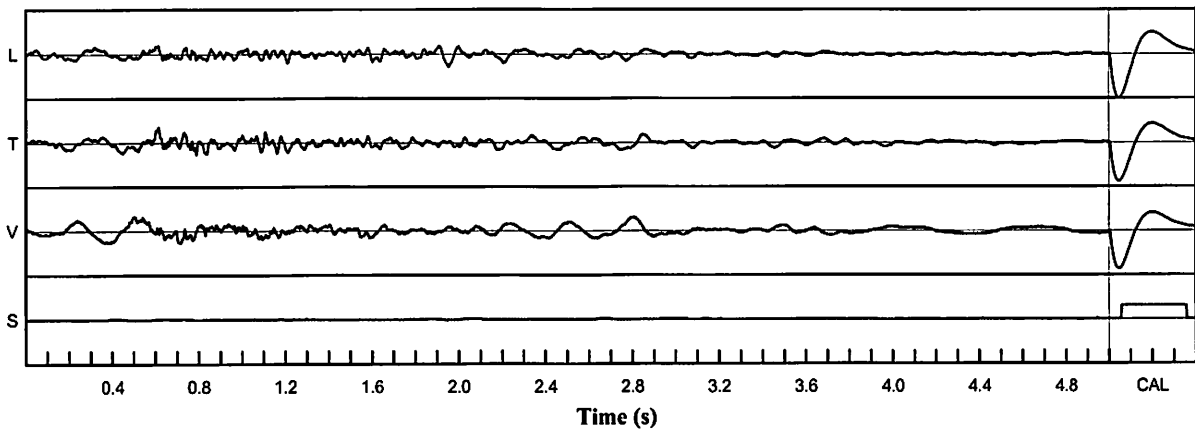
**Shaketable Calibrated:** 03/12/2021  
**By:** GeoSonics Inc.  
 359 Northgate Drive  
 Warrendale, PA 15086 U.S.A.  
 TEL: 724.934.2900 FAX: 724.934.2999

### USBM Safe Blasting Levels



### Velocity Waveform

SN: 5149 Event: 16



### Velocity Waveform Graph Scale

**Time Scale:** 0.100 s  
**Seismic Scale:** +/- 0.160 in/s  
**Sound Scale:** +/- 0.0023 PSI



# GeoSonics Seismic Analysis

## USBM/Velocity Waveform Report

**Serial No:** 5149 v3.67  
**Date:** 11/09/2022 13:34:18  
**Event No:** 17  
**Record Time:** 5.0 s  
**Client:** City of Miramar  
**Operation:** White Rock  
**Location:** 5276 SW 152 Ave  
**Distance:**  
**Operator:**  
**Comment:**  
**Seismic Trigger:** 0.050 in/s

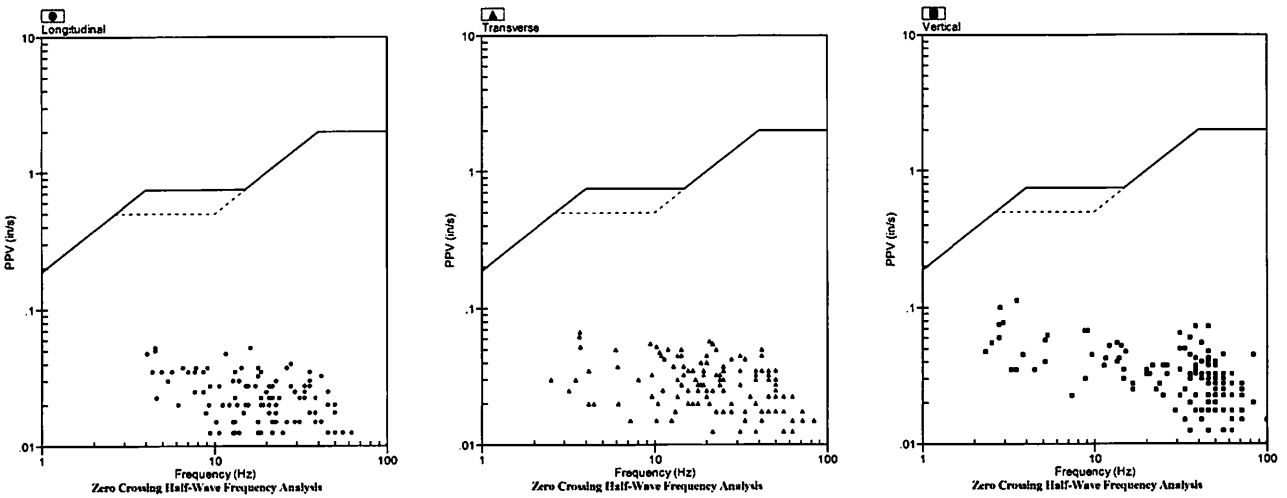
### Summary Data

	L	T	V
PPV (in/s)	0.053	0.068	0.113
FREQ (Hz)	16.1	3.7	3.5
PD (.001")	1.75	2.23	4.41
PPA (g)	0.026	0.033	0.052
Peak Vector Sum:	0.118 in/s		
Peak Air Pressure:	105 db		
	0.00057 PSI @ 55.6 Hz		

### Additional Info:

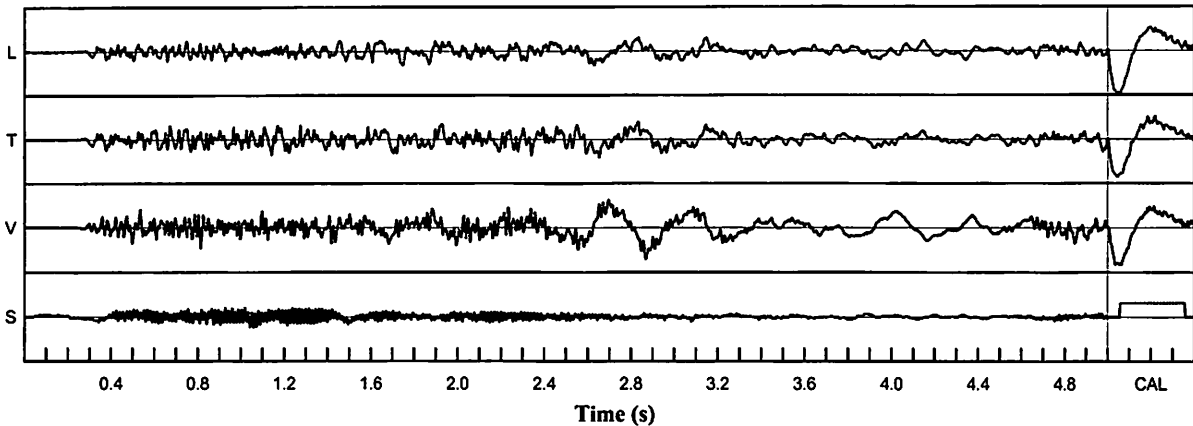
**Shaketable Calibrated:** 03/12/2021  
**By:** GeoSonics Inc.  
 359 Northgate Drive  
 Warrendale, PA 15086 U.S.A.  
 TEL: 724.934.2900 FAX: 724.934.2999

### USBM Safe Blasting Levels



### Velocity Waveform

SN: 5149 Event: 17



### Velocity Waveform Graph Scale

**Time Scale:** 0.100 s  
**Seismic Scale:** +/- 0.160 in/s  
**Sound Scale:** +/- 0.0023 PSI





# GeoSonics Seismic Analysis

## USBM/Velocity Waveform Report

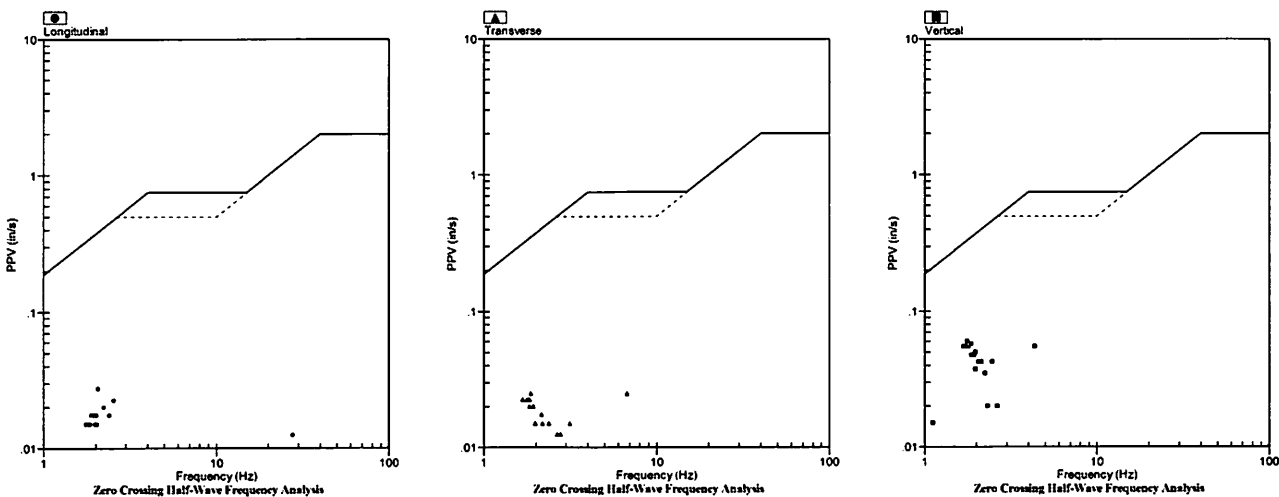
**Serial No:** 5149 v3.67  
**Date:** 11/14/2022 13:04:09  
**Event No:** 18  
**Record Time:** 5.0 s  
**Client:** City of Miramar  
**Operation:** White Rock  
**Location:** 5276 SW 152 Ave  
**Distance:**  
**Operator:**  
**Comment:**  
**Seismic Trigger:** 0.050 in/s

Summary Data			
	L	T	V
PPV (in/s)	0.030	0.040	0.060
FREQ (Hz)	2.6	2.4	1.8
PD (.001")	2.00	2.57	5.15
PPA (g)	0.013	0.013	0.013
Peak Vector Sum:	0.063 in/s		
Peak Air Pressure:	81 db		
	0.00007 PSI @ 125.0 Hz		

**Additional Info:**

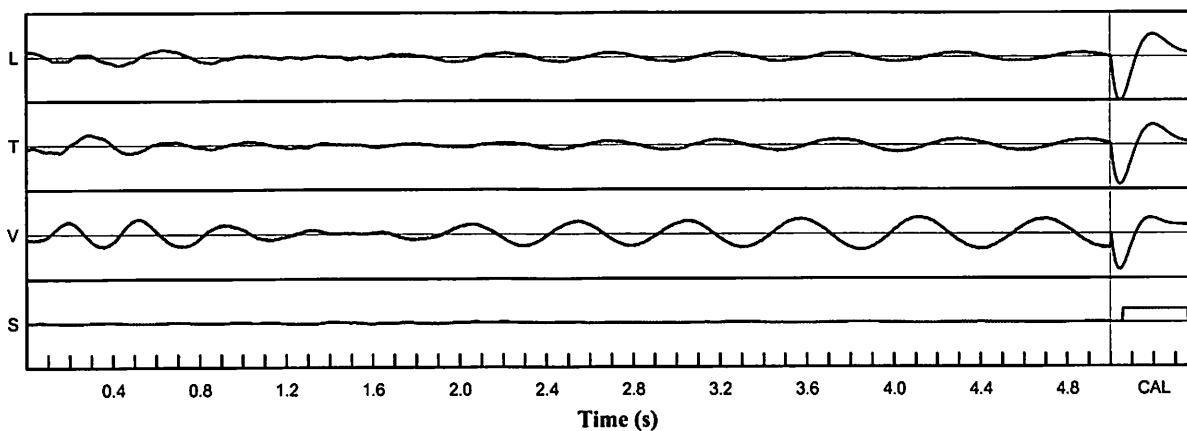
**Shaketable Calibrated:** 03/12/2021  
**By:** GeoSonics Inc.  
 359 Northgate Drive  
 Warrendale, PA 15086 U.S.A.  
 TEL: 724.934.2900 FAX: 724.934.2999

### USBM Safe Blasting Levels



### Velocity Waveform

SN: 5149 Event: 18



**Velocity Waveform Graph Scale**

**Time Scale:** 0.100 s  
**Seismic Scale:** +/- 0.160 in/s  
**Sound Scale:** +/- 0.0023 PSI



# GeoSonics Seismic Analysis

## USBM/Velocity Waveform Report

**Serial No:** 5149 v3.67  
**Date:** 11/16/2022 14:04:12  
**Event No:** 19  
**Record Time:** 5.0 s  
**Client:** City of Miramar  
**Operation:** White Rock  
**Location:** 5276 SW 152 Ave  
**Distance:**  
**Operator:**  
**Comment:**  
**Seismic Trigger:** 0.050 in/s

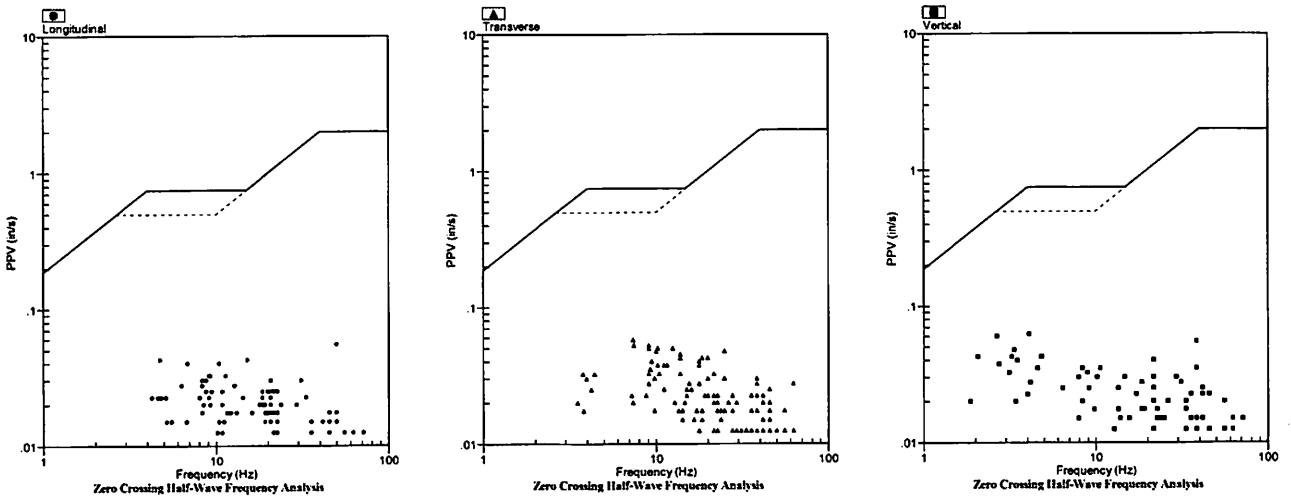
### Summary Data

	L	T	V
PPV (in/s)	0.058	0.058	0.063
FREQ (Hz)	9.8	7.4	4.1
PD (.001")	1.25	1.24	2.47
PPA (g)	0.020	0.026	0.039
Peak Vector Sum:	0.080 in/s		
Peak Air Pressure:	84 db		
	0.00011 PSI @ 1.0 Hz		

### Additional Info:

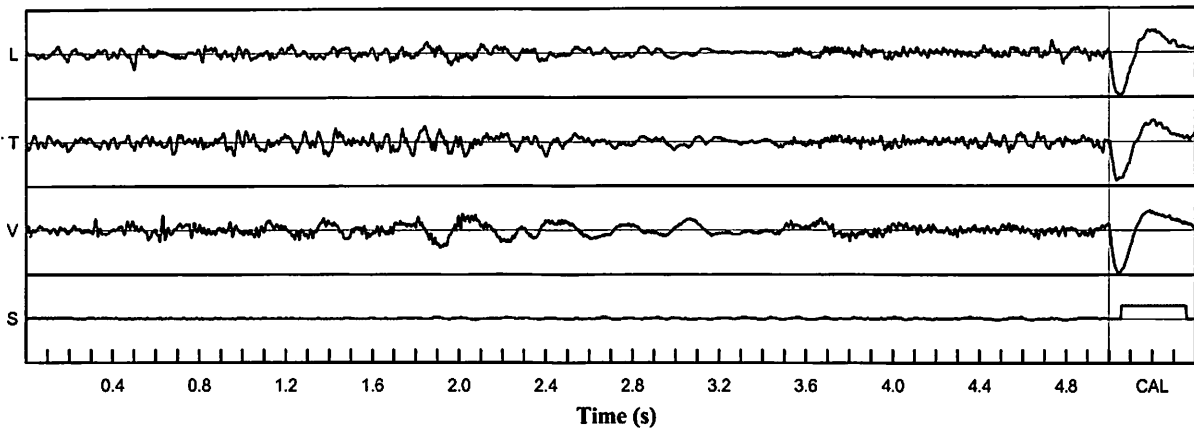
**Shaketable Calibrated:** 03/12/2021  
**By:** GeoSonics Inc.  
 359 Northgate Drive  
 Warrendale, PA 15086 U.S.A.  
 TEL: 724.934.2900 FAX: 724.934.2999

### USBM Safe Blasting Levels



### Velocity Waveform

SN: 5149 Event: 19



### Velocity Waveform Graph Scale

**Time Scale:** 0.100 s  
**Seismic Scale:** +/- 0.160 in/s  
**Sound Scale:** +/- 0.0023 PSI



# GeoSonics Seismic Analysis

## USBM/Velocity Waveform Report

**Serial No:** 5149 v3.67  
**Date:** 12/13/2022 13:48:03  
**Event No:** 21  
**Record Time:** 5.0 s  
**Client:** City of Miramar  
**Operation:** White Rock  
**Location:** 5276 SW 152 Ave  
**Distance:**  
**Operator:**  
**Comment:**  
**Seismic Trigger:** 0.050 in/s

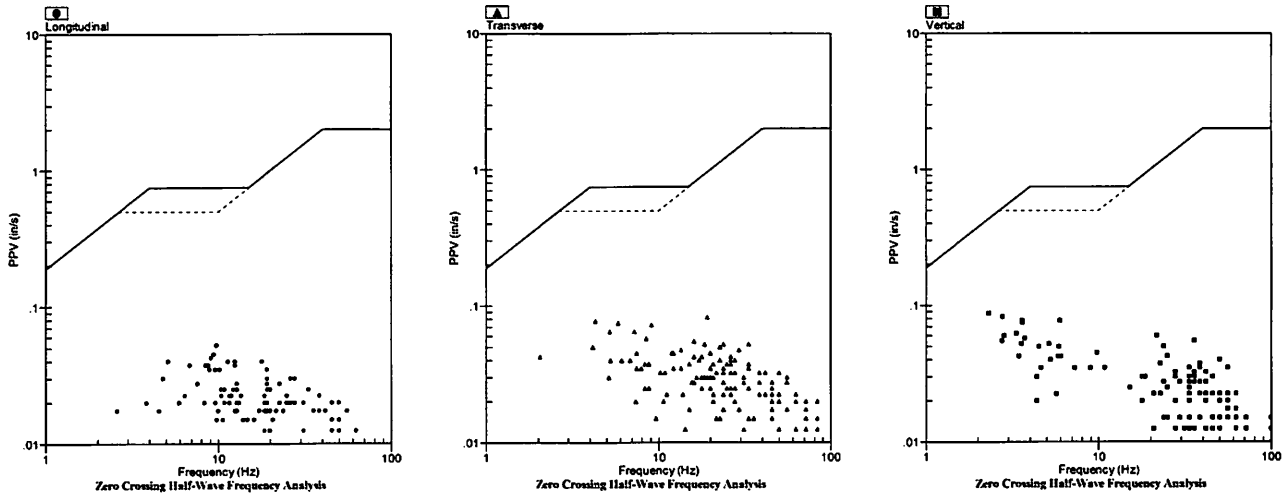
### Summary Data

	L	T	V
PPV (in/s)	0.053	0.083	0.088
FREQ (Hz)	9.8	19.2	2.3
PD (.001")	1.17	2.99	5.34
PPA (g)	0.026	0.039	0.039
Peak Vector Sum:	0.095 in/s		
Peak Air Pressure:	79 db		
	0.00005 PSI @ 1.0 Hz		

### Additional Info:

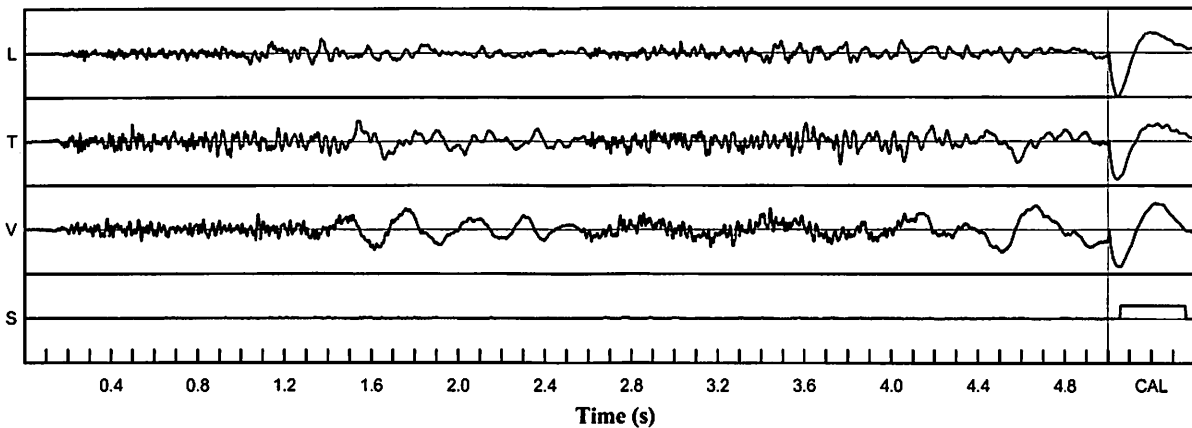
**Shaketable Calibrated:** 03/12/2021  
**By:** GeoSonics Inc.  
 359 Northgate Drive  
 Warrendale, PA 15086 U.S.A.  
 TEL: 724.934.2900 FAX: 724.934.2999

### USBM Safe Blasting Levels



### Velocity Waveform

SN: 5149 Event: 21



### Velocity Waveform Graph Scale

**Time Scale:** 0.100 s  
**Seismic Scale:** +/- 0.160 in/s  
**Sound Scale:** +/- 0.0023 PSI



# GeoSonics Seismic Analysis

## USBM/Velocity Waveform Report

**Serial No:** 5149 v3.67  
**Date:** 12/15/2022 14:48:17  
**Event No:** 22  
**Record Time:** 5.0 s  
**Client:** City of Miramar  
**Operation:** White Rock  
**Location:** 5276 SW 152 Ave  
**Distance:**  
**Operator:**  
**Comment:**  
**Seismic Trigger:** 0.050 in/s

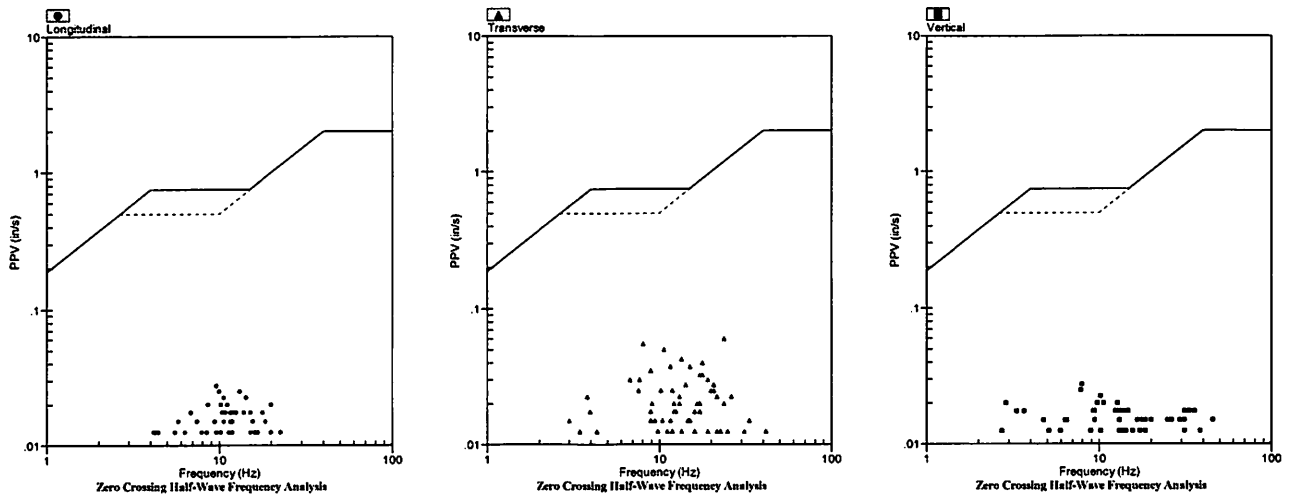
### Summary Data

	L	T	V
PPV (in/s)	0.028	0.060	0.035
FREQ (Hz)	9.6	11.4	11.9
PD (.001")	0.55	0.99	0.87
PPA (g)	0.013	0.020	0.020
Peak Vector Sum:	0.065 in/s		
Peak Air Pressure:	87 db		
	0.00014 PSI @ 1.0 Hz		

### Additional Info:

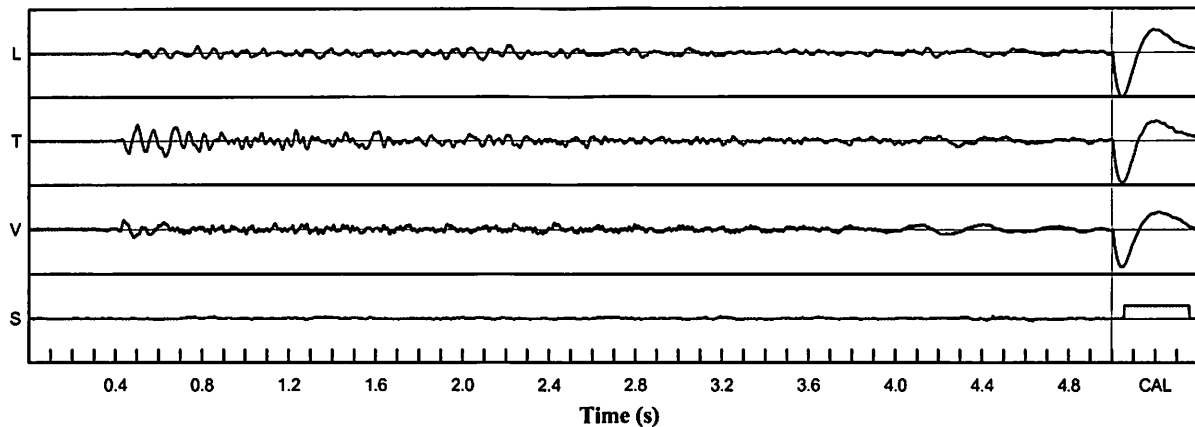
**Shaketable Calibrated:** 03/12/2021  
**By:** GeoSonics Inc.  
 359 Northgate Drive  
 Warrendale, PA 15086 U.S.A.  
 TEL: 724.934.2900 FAX: 724.934.2999

### USBM Safe Blasting Levels



### Velocity Waveform

SN: 5149 Event: 22



### Velocity Waveform Graph Scale

**Time Scale:** 0.100 s  
**Seismic Scale:** +/- 0.160 in/s  
**Sound Scale:** +/- 0.0023 PSI



# GeoSonics Seismic Analysis

## USBM/Velocity Waveform Report

**Serial No:** 5149 v3.67  
**Date:** 12/21/2022 13:11:24  
**Event No:** 23  
**Record Time:** 5.0 s  
**Client:** City of Miramar  
**Operation:** White Rock  
**Location:** 5276 SW 152 Ave  
**Distance:**  
**Operator:**  
**Comment:**  
**Seismic Trigger:** 0.050 in/s

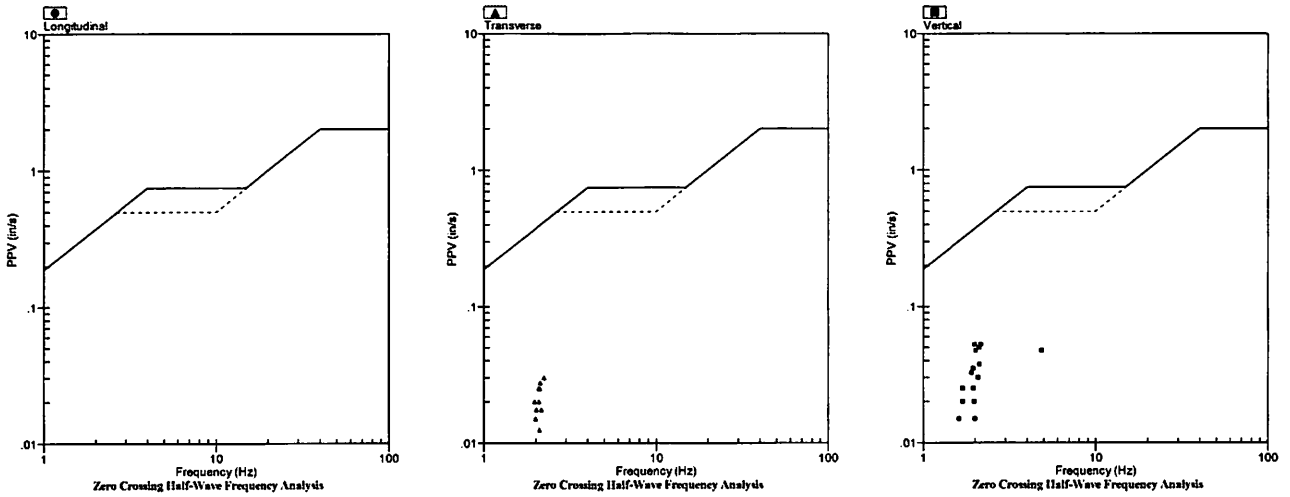
### Summary Data

	L	T	V
PPV (in/s)	0.010	0.030	0.053
FREQ (Hz)	3.3	2.2	2.2
PD (.001")	0.56	2.02	4.00
PPA (g)	0.013	0.013	0.013
Peak Vector Sum:	0.053 in/s		
Peak Air Pressure:	79 db		
	0.00005 PSI @ 1.0 Hz		

### Additional Info:

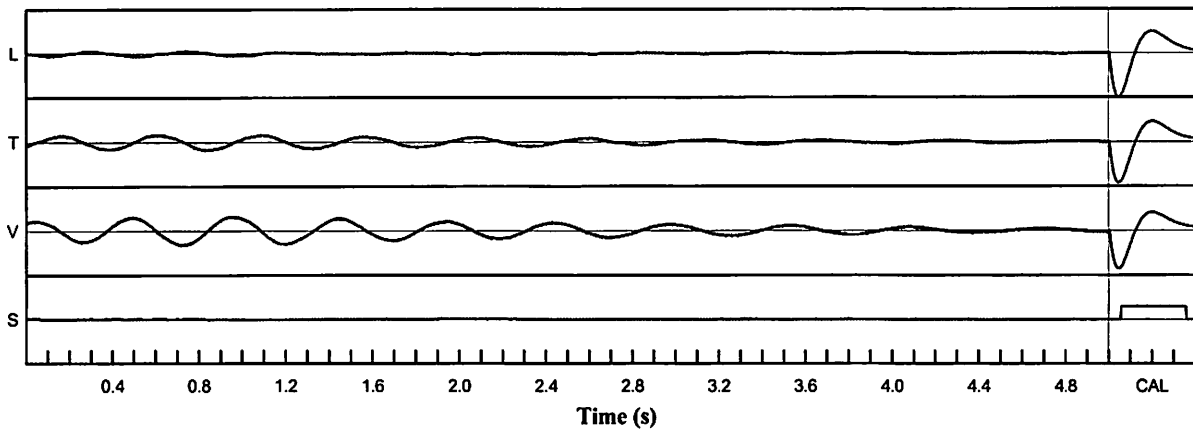
**Shaketable Calibrated:** 03/12/2021  
**By:** GeoSonics Inc.  
 359 Northgate Drive  
 Warrendale, PA 15086 U.S.A.  
 TEL: 724.934.2900 FAX: 724.934.2999

### USBM Safe Blasting Levels



### Velocity Waveform

SN: 5149 Event: 23



### Velocity Waveform Graph Scale

**Time Scale:** 0.100 s  
**Seismic Scale:** +/- 0.160 in/s  
**Sound Scale:** +/- 0.0023 PSI